



TIMBER SALE MAP

This information provided by authority of Part 525, 1994 PA 451, as amended.

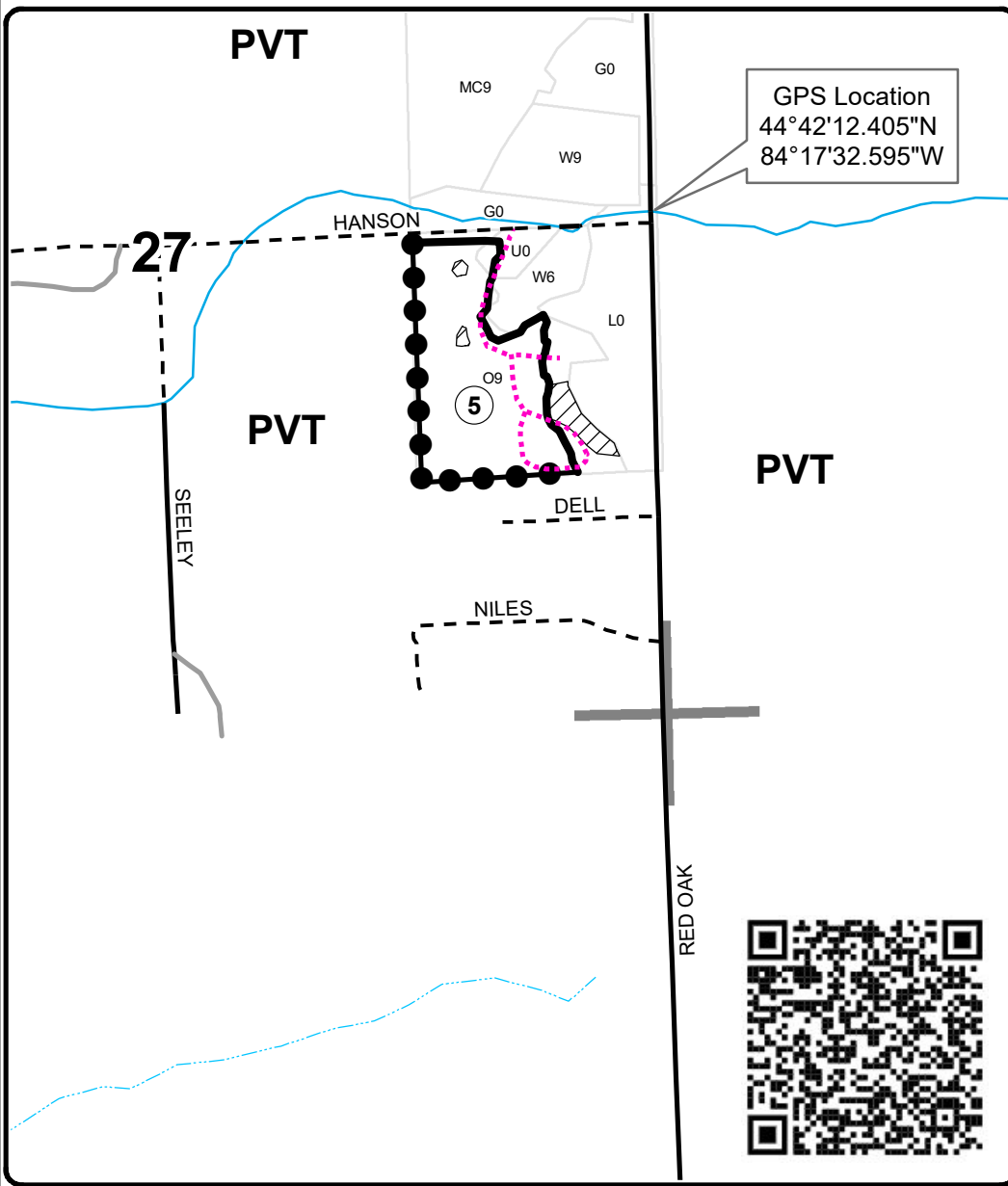
| Forest Management Unit Grayling | | County Oscoda | Mapped By Mittig | Date 11/25/2020 | Page 2 | of 2 |
|------------------------------------|----------------------|---|---------------------|-----------------------------|------------------------|---------|
| Township 27N | Range 01E | Section(s) and Subdivision(s) Sec 27: NESE Sec 36: E1/2NW,NWNE,S1/2NE,E1/2SW,SE | | Scale 1:12,000 | | |
| Cover Type | | | | Density | | |
| A = Aspen | H = Hemlock | N = Marsh | U = Upland Brush | 0 = Non Stocked | 5 = Pole Timber Medium | |
| B = Paper Birch | J = Jack Pine | O = Oak | UM = Upland Mixed | 1 = Seedling Sapling Poor | 6 = Pole Timber Well | |
| C = Cedar | L = Lowland Brush | P = Lowland Poplar | V = Bog or Marsh | 2 = Seedling Sapling Medium | 7 = Saw Timber Poor | |
| D = Treed Bog | LM = Lowland Mixed | Q = Mixed Swamp Conifer | W = White Pine | 3 = Seedling Sapling Well | 8 = Saw Timber Medium | |
| E = Swamp Hdwoods | M = Mpl, Bch, Brch | R = Red Pine | X = Non Stocked | 4 = Pole Timber Poor | 9 = Saw Timber Well | |
| F = Spruce Fir | MC = Mixed Conifer | S = Black Spruce | Z = Water | | | |
| G = Grass | MD = Mixed Deciduous | T = Tamarack | | | | |

| PU | Acres | PU | Acres |
|----|-------|----|-------|
| 1 | 17 | 4 | 45.8 |
| 2 | 18 | 5 | 17.6 |
| 3 | 23.4 | 6 | 10.7 |

Nameless Oak

Compartment 002

132.5 Acres



Legend

- Against State (Red)
- Private Line (Blue)
- Payment Unit
- Retention Area
- Stand Boundaries
- Paved Road
- Gravel Road
- Private
- Temporary Management Access
- Intermittent Stream
- Perennial River
- Section Corners

Locator Map

1:200,000

