



### TIMBER SALE MAP

This information provided by authority of Part 525, 1994 PA 451, as amended.

Sale Number <b>32-011-24</b>	Date 10/02/2024	
Scale 1:15,840	Page 1	Of 1

Forest Management Unit Gwinn Mgt Unit	County Marquette	Mapped By: Siler Cruised By: Gwinn Staff
--	---------------------	---

Township 47N	Range 23W	Section(s) and Subdivision(s) Sec. 22 E1/2NE; Sec. 23 NW,W1/2NE,N1/2SW,SWSW,NWSE;
-----------------	--------------	---

Cover Type			
A = Aspen	J = Jack Pine	O = Oak	U = Upland Brush
B = Paper Birch	K = Rock	P = Lowland Poplar	UM = Upland Mix Forest
C = Cedar	L = Lowland Brush	Q = Mixed Swamp Conifer	V = Bog or Marsh
D = Treed Bog	LM = Lowland Mix Forest	R = Red Pine	W = White Pine
E = Swamp Hardwoods	M = Maple, Beech, Birch	S = Black Spruce	X = Non Stocked
F = Spruce/Fir	MC = Mixed Conifer	T = Tamarack	Y = Sand
G = Grass	MD = Mixed Deciduous	Z = Water	
H = Hemlock	N = Marsh		

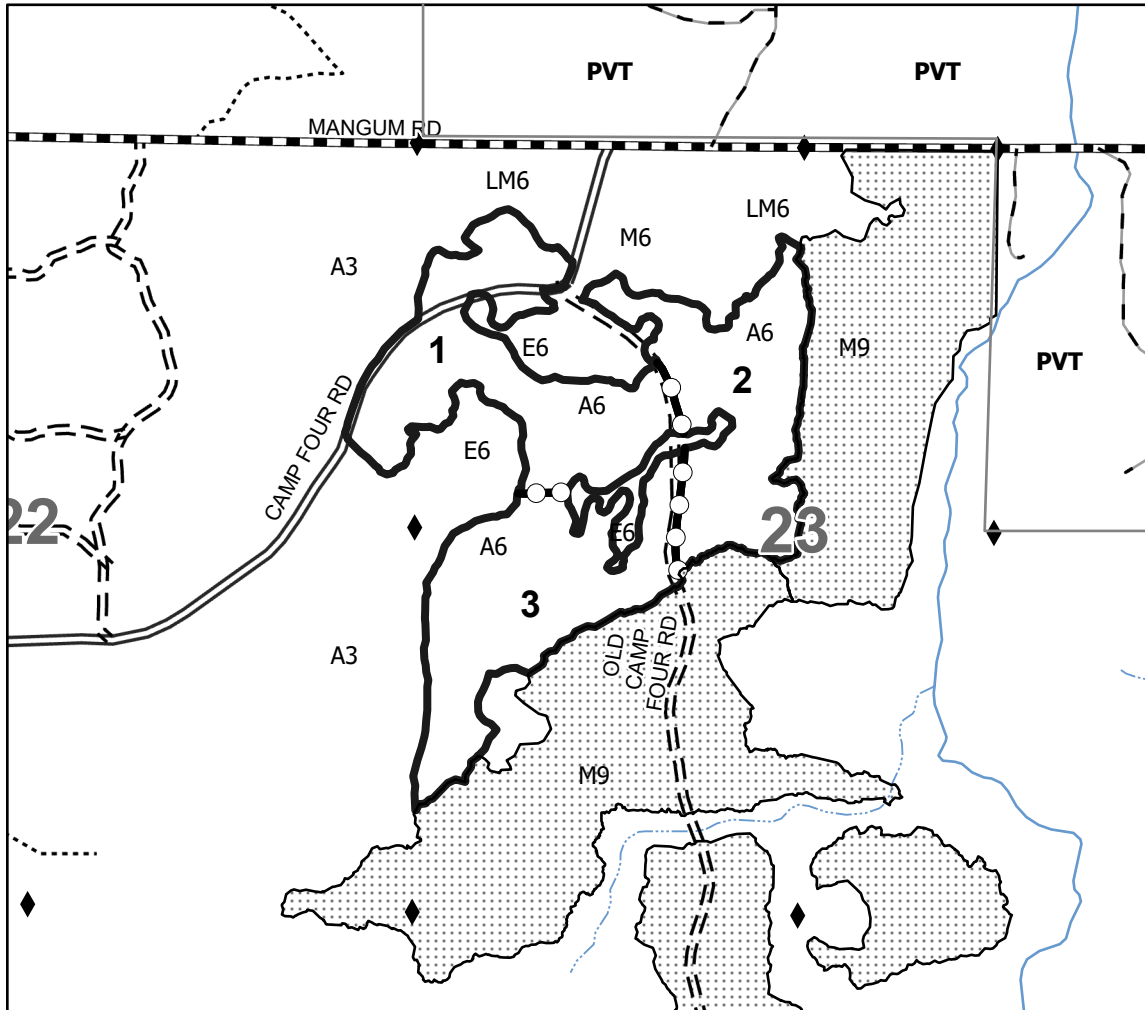
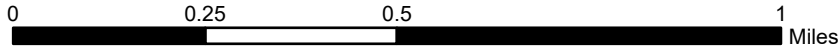
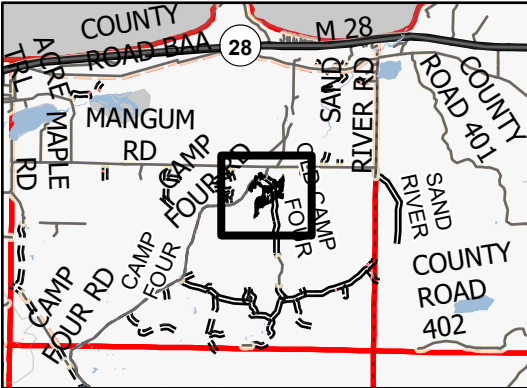
Density	
0 = Non Stocked	5 = Pole Timber Medium
1 = Seedling Sapling Poor	6 = Pole Timber Well
2 = Seedling Sapling Medium	7 = Saw Timber Poor
3 = Seedling Sapling Well	8 = Saw Timber Medium
4 = Pole Timber Poor	9 = Saw Timber Well

PU #	Acres
1	44.9
2	38.3
3	43.9

## Buck Snort Aspen

### 127.1 Acres

### Locator Map 1:200,000



### Legend

- Against State (Red)
- Payment Unit (Yellow)
- State Boundary
- Primary Forest Road
- Forest Access Route
- Administrative Access Only
- Government Gravel/Dirt
- Private Gravel/Dirt
- Intermittent Stream
- Perennial River
- Survey Grade Corner
- Nearby Timber Sale

Use QR Code to open Map in App

