



### TIMBER SALE MAP

This information provided by authority of Part 525, 1994 PA 451, as amended.

Sale Number <b>32-008-24</b>	Date <b>09/25/2024</b>
Scale <b>1:24,000</b>	Page <b>2</b>
	Of <b>2</b>

Forest Management Unit <b>Gwinn Mgt Unit</b>	County <b>Marquette</b>	Mapped By: <b>Brodeur</b>
		Cruised By: <b>Gwinn Staff</b>

Township <b>46N</b>	Range <b>27W</b>	Section(s) and Subdivision(s) <b>Sec. 23 W1/2SE; Sec. 26 N1/2NE,SESE; Sec. 35 NW,NE,SESW,NWSE,S1/2SE; Sec. 36 SWSW;</b>
------------------------	---------------------	---

#### Cover Type

A = Aspen	J = Jack Pine	O = Oak	U = Upland Brush
B = Paper Birch	K = Rock	P = Lowland Poplar	UM = Upland Mix Forest
C = Cedar	L = Lowland Brush	Q = Mixed Swamp Conifer	V = Bog or Marsh
D = Treed Bog	LM = Lowland Mix Forest	R = Red Pine	W = White Pine
E = Swamp Hardwoods	M = Maple, Beech, Birch	S = Black Spruce	X = Non Stocked
F = Spruce/Fir	MC = Mixed Conifer	T = Tamarack	Y = Sand
G = Grass	MD = Mixed Deciduous	Z = Water	
H = Hemlock	N = Marsh		

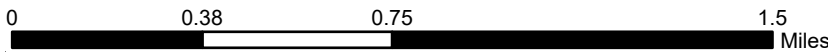
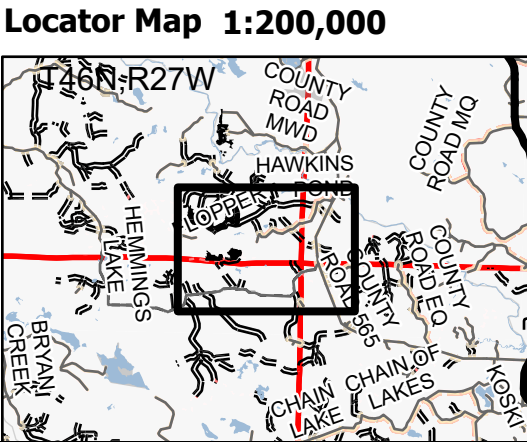
#### Density

0 = Non Stocked	5 = Pole Timber Medium
1 = Seedling Sapling Poor	6 = Pole Timber Well
2 = Seedling Sapling Medium	7 = Saw Timber Poor
3 = Seedling Sapling Well	8 = Saw Timber Medium
4 = Pole Timber Poor	9 = Saw Timber Well

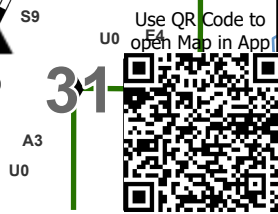
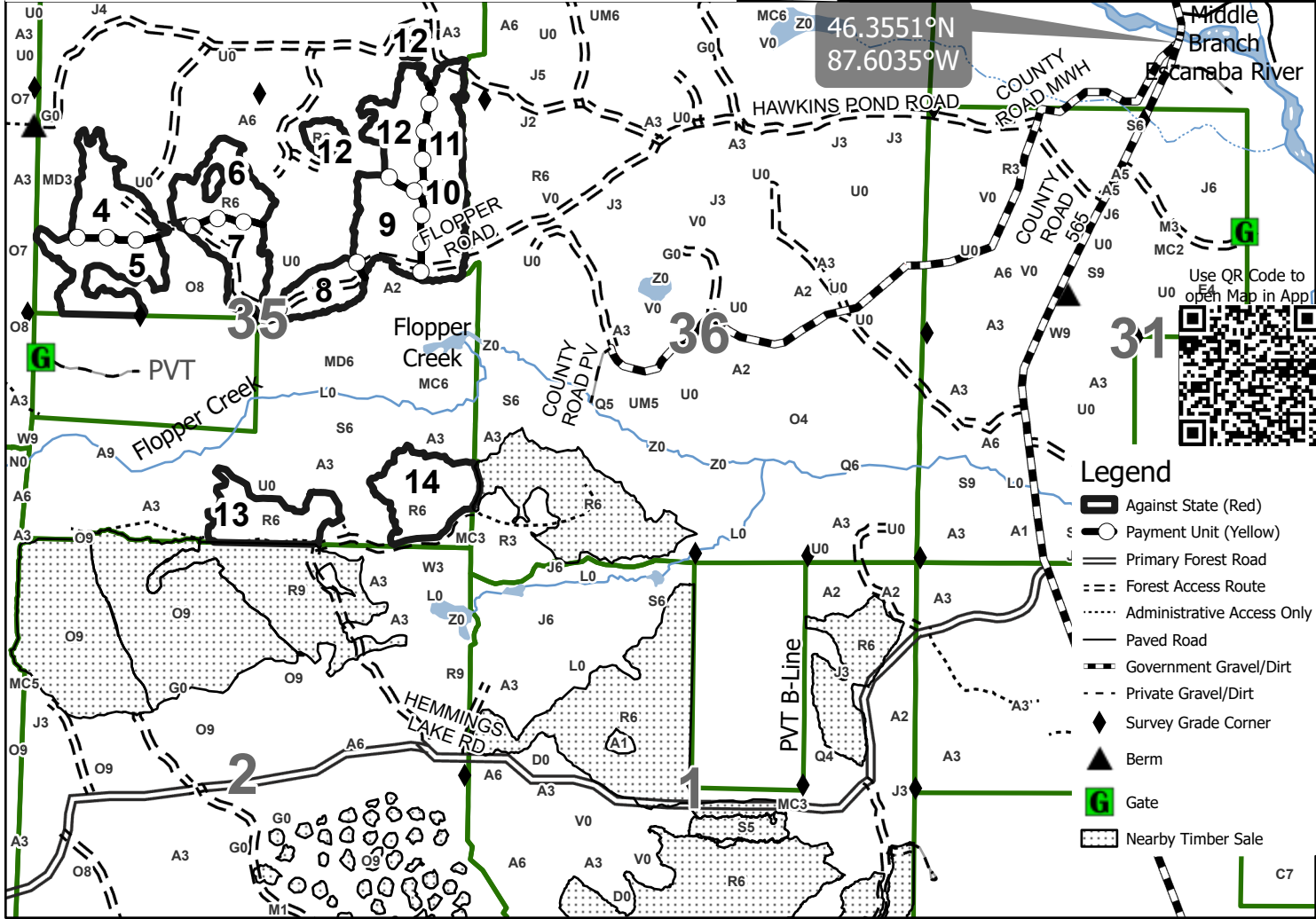
PU #	Acres	PU #	Acres	PU #	Acres
1	15	6	16.3	11	14.1
2	11.8	7	14.7	12	20.9
3	11.3	8	10.3	13	18.3
4	17.5	9	18.1	14	21.2
5	20.2	10	12.2		

## Grouse Picnic Pine

**222.2 Acres**



**46.3551°N**  
**87.6035°W**



#### Legend

- Against State (Red)
- Payment Unit (Yellow)
- Primary Forest Road
- Forest Access Route
- ..... Administrative Access Only
- Paved Road
- Government Gravel/Dirt
- Private Gravel/Dirt
- ◆ Survey Grade Corner
- ▲ Berm
- G** Gate
- ▨ Nearby Timber Sale