



TIMBER SALE MAP

This information provided by authority of Part 525, 1994 PA 451, as amended.

Sale Number 32-007-24	Date 09/30/2024	
Scale 1:15,840	Page 2	Of 2

Forest Management Unit Gwinn Mgt Unit	County Marquette	Mapped By: Brodeur Cruised By: Gwinn Staff
---	----------------------------	---

Township 43N	Range 24W	Section(s) and Subdivision(s) N1/2NE; Sec. 7 SESE; Sec. 9 SESE; Sec. 16 S1/2NW,N1/2NE,SWNE,N1/2SW,SESW; Sec. 17 SENE,NWSE; Sec. 18 NE,SE; Sec. 19
------------------------	---------------------	--

Cover Type			
A = Aspen	J = Jack Pine	O = Oak	U = Upland Brush
B = Paper Birch	K = Rock	P = Lowland Poplar	UM = Upland Mix Forest
C = Cedar	L = Lowland Brush	Q = Mixed Swamp Conifer	V = Bog or Marsh
D = Treed Bog	LM = Lowland Mix Forest	R = Red Pine	W = White Pine
E = Swamp Hardwoods	M = Maple, Beech, Birch	S = Black Spruce	X = Non Stocked
F = Spruce/Fir	MC = Mixed Conifer	T = Tamarack	Y = Sand
G = Grass	MD = Mixed Deciduous	Z = Water	
H = Hemlock	N = Marsh		

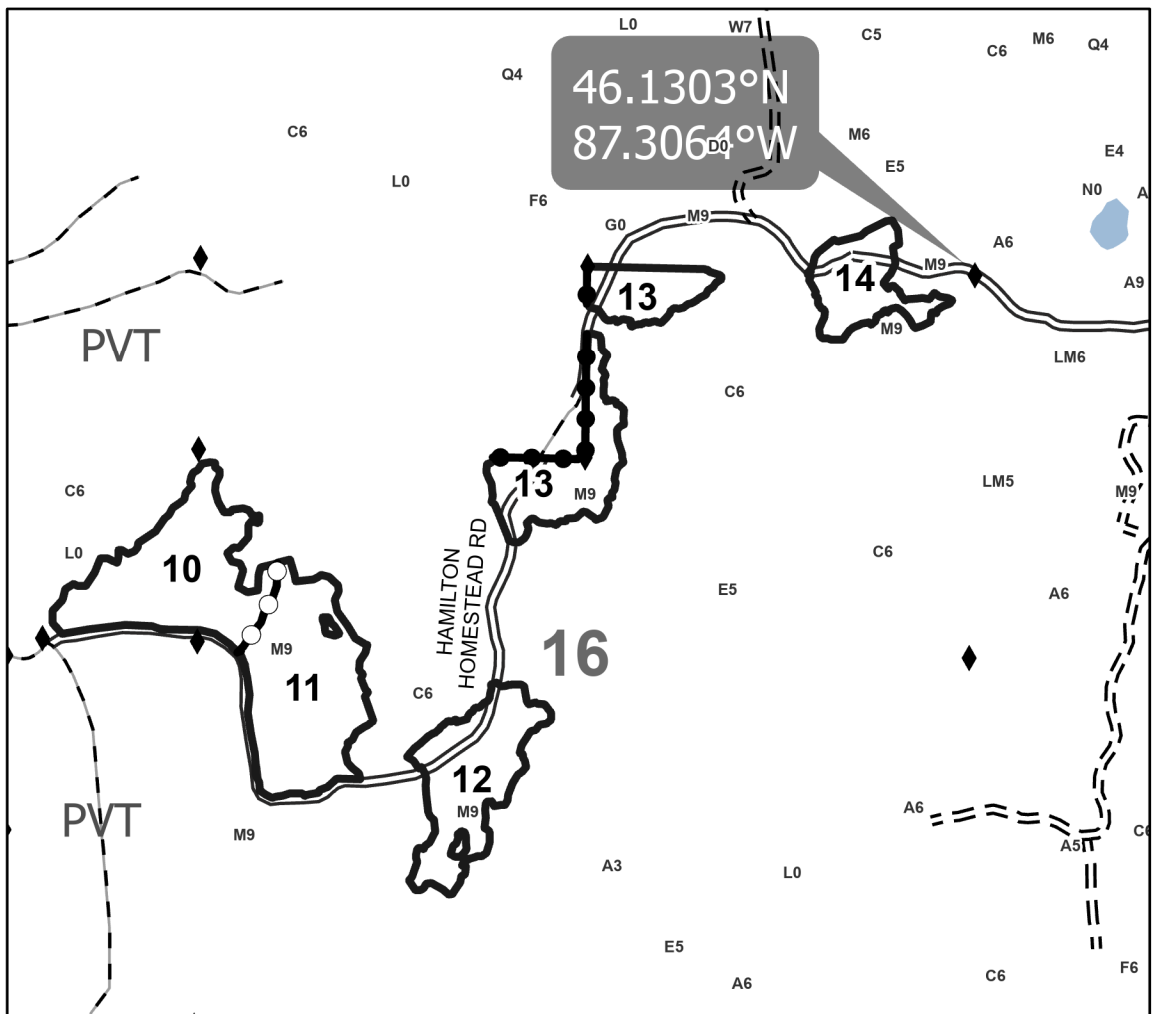
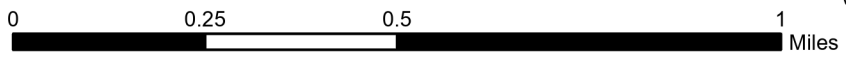
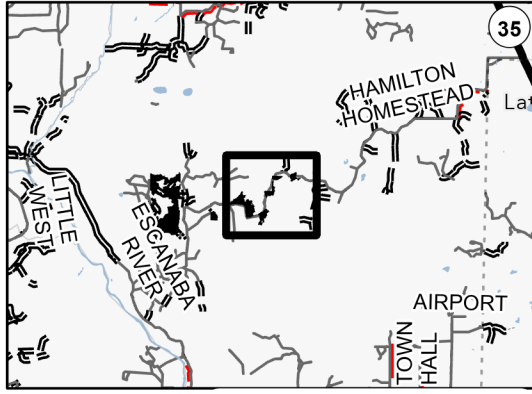
Density	
0 = Non Stocked	5 = Pole Timber Medium
1 = Seedling Sapling Poor	6 = Pole Timber Well
2 = Seedling Sapling Medium	7 = Saw Timber Poor
3 = Seedling Sapling Well	8 = Saw Timber Medium
4 = Pole Timber Poor	9 = Saw Timber Well

PU #	Acres	PU #	Acres	PU #	Acres
1	27.6	6	48.2	11	23
2	26.2	7	17.4	12	15.6
3	17.6	8	27.3	13	18.2
4	17.4	9	9.7	14	8.9
5	7.2	10	21.5		

Marvelous McFarland Mix

Compartment 79
285.8 Acres

Locator Map 1:200,000



Legend

- Against State (Red)
- Private Line (Blue)
- Payment Unit (Yellow)
- Primary Forest Road
- Forest Access Route
- Private Gravel/Dirt
- Survey Grade Corner
- Nearby Timber Sale

Use QR Code to open Map in App

