



TIMBER SALE MAP

This information provided by authority of Part 525, 1994 PA 451, as amended.

Sale Number 32-014-24	Date 10/03/2024	
Scale 1:15,840	Page 1	Of 1

Forest Management Unit Gwinn Mgt Unit	County Marquette	Mapped By: Siler
		Cruised By: Gwinn Staff & Contractor

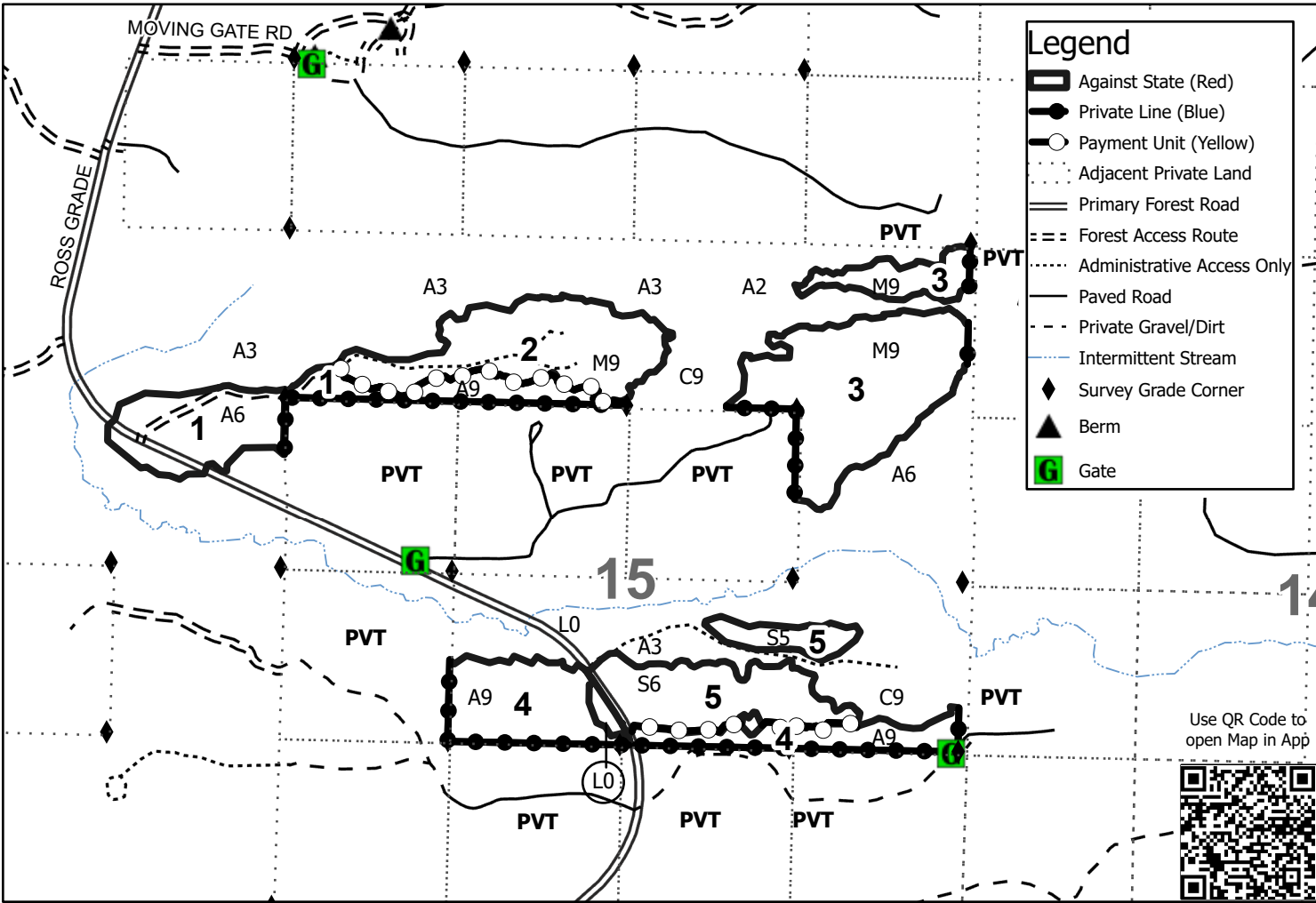
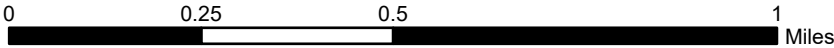
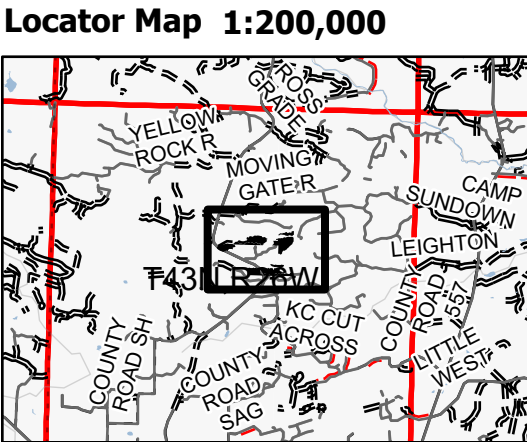
Township 43N	Range 26W	Section(s) and Subdivision(s) Sec. 15 N1/2NW,N1/2NE,SENE,NESW,N1/2SE; Sec. 16 NENE,S1/2NE;
------------------------	---------------------	--

Cover Type			
A = Aspen	J = Jack Pine	O = Oak	U = Upland Brush
B = Paper Birch	K = Rock	P = Lowland Poplar	UM = Upland Mix Forest
C = Cedar	L = Lowland Brush	Q = Mixed Swamp Conifer	V = Bog or Marsh
D = Treed Bog	LM = Lowland Mix Forest	R = Red Pine	W = White Pine
E = Swamp Hardwoods	M = Maple, Beech, Birch	S = Black Spruce	X = Non Stocked
F = Spruce/Fir	MC = Mixed Conifer	T = Tamarack	Y = Sand
G = Grass	MD = Mixed Deciduous	Z = Water	
H = Hemlock	N = Marsh		

Density	
0 = Non Stocked	5 = Pole Timber Medium
1 = Seedling Sapling Poor	6 = Pole Timber Well
2 = Seedling Sapling Medium	7 = Saw Timber Poor
3 = Seedling Sapling Well	8 = Saw Timber Medium
4 = Pole Timber Poor	9 = Saw Timber Well

PU #	Acres
1	25.4
2	27
3	42.4
4	26.6
5	24

Give A Hand Mix
145.5 Acres



Use QR Code to open Map in App

