



TIMBER SALE MAP

This information provided by authority of Part 525, 1994 PA 451, as amended.

Sale Number 32-004-24	Date 01/21/2025	
Scale 1:15,840	Page 1	Of 1

Forest Management Unit Gwinn Mgt Unit	County Marquette	Mapped By: Matt Yeo
		Cruised By: Contractor & Gwinn Staff

Township 43N	Range 26W	Section(s) and Subdivision(s) Sec. 10 NENW, S1/2 NW, W 1/2 NE, NESW, NWSE; Sec 3 NWSW, S1/2 SW, NWSE, S 1/2 SE; Sec 9 SENE
------------------------	---------------------	--------------------------------------------------------------------------------------------------------------------------------------

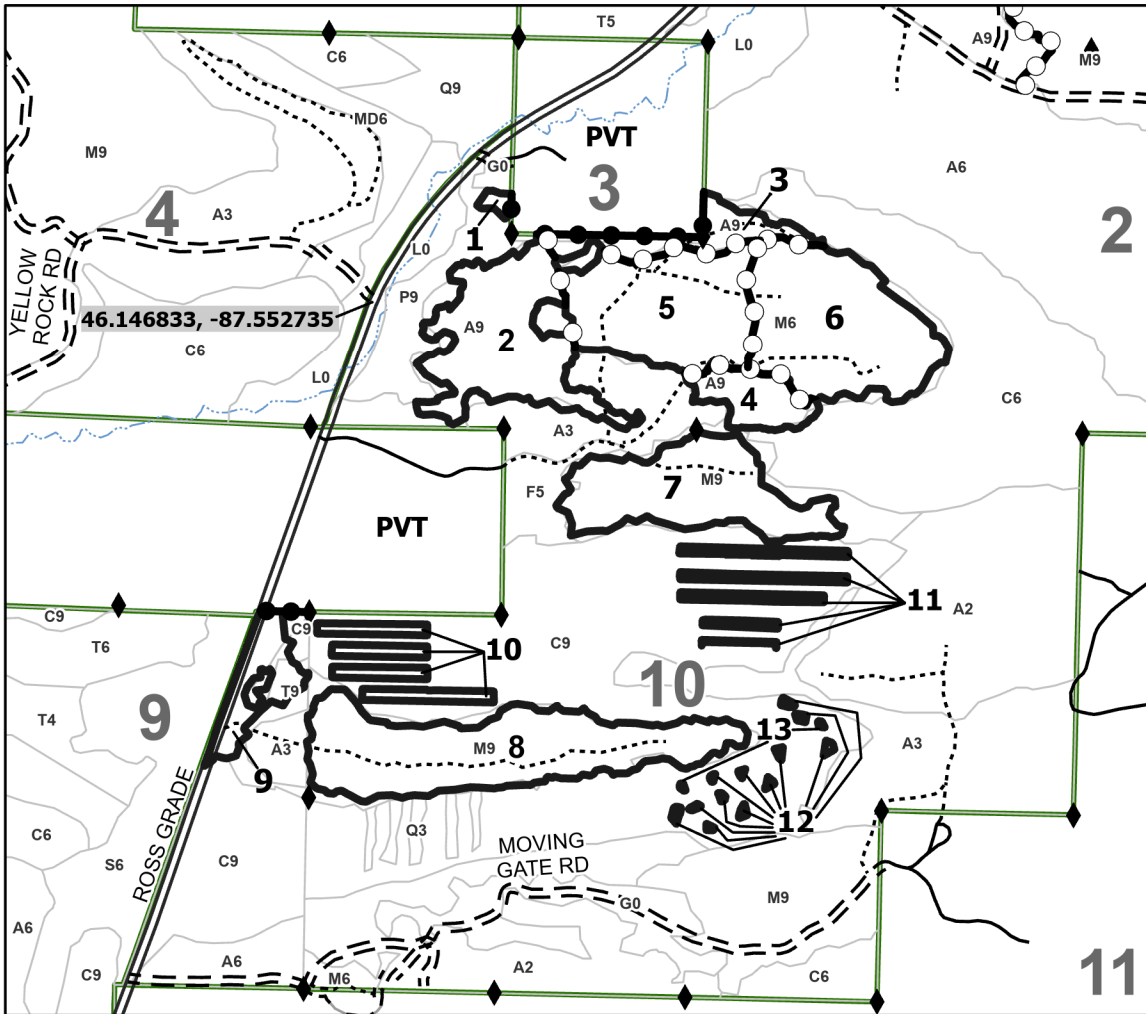
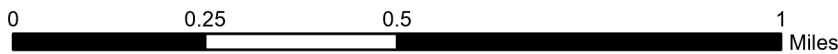
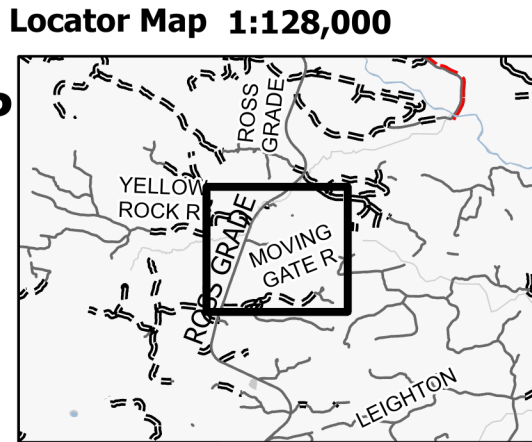
Cover Type			
A = Aspen	J = Jack Pine	O = Oak	U = Upland Brush
B = Paper Birch	K = Rock	P = Lowland Poplar	UM = Upland Mix Forest
C = Cedar	L = Lowland Brush	Q = Mixed Swamp Conifer	V = Bog or Marsh
D = Treed Bog	LM = Lowland Mix Forest	R = Red Pine	W = White Pine
E = Swamp Hardwoods	M = Maple, Beech, Birch	S = Black Spruce	X = Non Stocked
F = Spruce/Fir	MC = Mixed Conifer	T = Tamarack	Y = Sand
G = Grass	MD = Mixed Deciduous	Z = Water	
H = Hemlock	N = Marsh		

Density	
0 = Non Stocked	5 = Pole Timber Medium
1 = Seedling Sapling Poor	6 = Pole Timber Well
2 = Seedling Sapling Medium	7 = Saw Timber Poor
3 = Seedling Sapling Well	8 = Saw Timber Medium
4 = Pole Timber Poor	9 = Saw Timber Well

PU #	Acres	PU #	Acres	PU #	Acres
1	0.6	6	25.2	11	4.2
2	20.5	7	19.1	12	0.8
3	6.5	8	29.6	13	0.1
4	5.7	9	6.2		
5	21.4	10	5.2		

High Low Mix CRP

145.0 Acres



Legend	
	Against State (Red)
	Private Line (Blue)
	Payment Unit (Yellow)
	Primary Forest Road
	Forest Access Route
	Administrative Access Only
	Paved Road
	Private Gravel/Dirt
	Recreational Trails
	Survey Grade Corner

Use QR Code to open Map in App

