



TIMBER SALE MAP

This information provided by authority of Part 525, 1994 PA 451, as amended.

Sale Number 32-013-24	Date 09/24/2024
Scale 1:15,840	Page 2
	Of 2

Forest Management Unit Gwinn Mgt Unit	County Marquette	Mapped By: Brodeur
		Cruised By: Gwinn Staff

Township 43N	Range 25W /	Section(s) and 8 N1/2NW; Subdivision(s) Sec. 1 SESW,NWSE,S1/2SE; Sec. 12 NENW,N1/2NE; Sec. 5 SWSW; Sec. 7 W1/2NW,NWSW; Sec.
------------------------	-----------------------	--

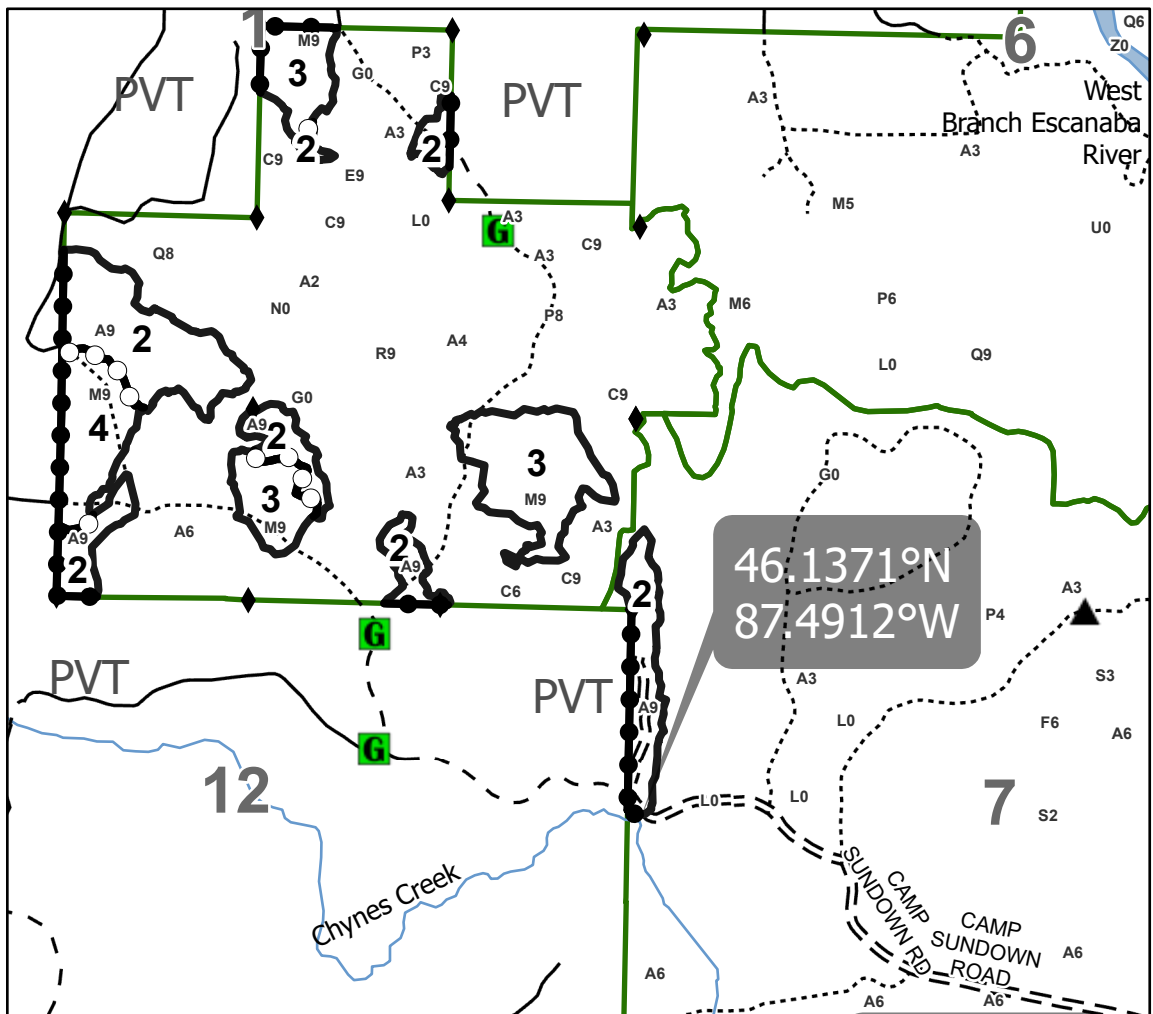
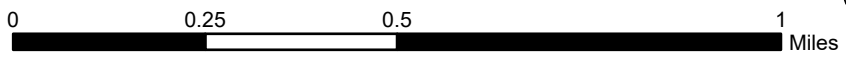
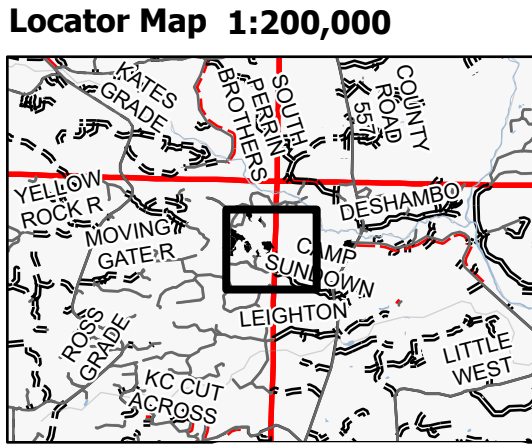
Cover Type			
A = Aspen	J = Jack Pine	O = Oak	U = Upland Brush
B = Paper Birch	K = Rock	P = Lowland Poplar	UM = Upland Mix Forest
C = Cedar	L = Lowland Brush	Q = Mixed Swamp Conifer	V = Bog or Marsh
D = Treed Bog	LM = Lowland Mix Forest	R = Red Pine	W = White Pine
E = Swamp Hardwoods	M = Maple, Beech, Birch	S = Black Spruce	X = Non Stocked
F = Spruce/Fir	MC = Mixed Conifer	T = Tamarack	Y = Sand
G = Grass	MD = Mixed Deciduous	Z = Water	
H = Hemlock	N = Marsh		

Density	
0 = Non Stocked	5 = Pole Timber Medium
1 = Seedling Sapling Poor	6 = Pole Timber Well
2 = Seedling Sapling Medium	7 = Saw Timber Poor
3 = Seedling Sapling Well	8 = Saw Timber Medium
4 = Pole Timber Poor	9 = Saw Timber Well

PU #	Acres
1	15.3
2	39
3	28.3
4	10.6

Lollipop Man

93.2 Acres



Legend	
	Against State (Red)
	Private Line (Blue)
	Payment Unit (Yellow)
	Forest Access Route
	Administrative Access Only
	Paved Road
	Private Gravel/Dirt
	Survey Grade Corner
	Berm
	Gate

Use QR Code to open Map in App

