



TIMBER SALE MAP

This information provided by authority of Part 525, 1994 PA 451, as amended.

Sale Number 32-013-24	Date 10/03/2024
Scale 1:15,840	Page 2
	Of 2

Forest Management Unit Gwinn Mgt Unit	County Marquette	Mapped By: Siler
		Cruised By: Gwinn Staff

Township 43N	Range 25W /	Section(s) and Subdivision(s) Sec. 1 SESW,NWSE,S1/2SE; Sec. 12 NENW,N1/2NE; Sec. 5 SWSW; Sec. 7 W1/2NW,NWSW; Sec. 8 N1/2NW;
------------------------	-----------------------	---

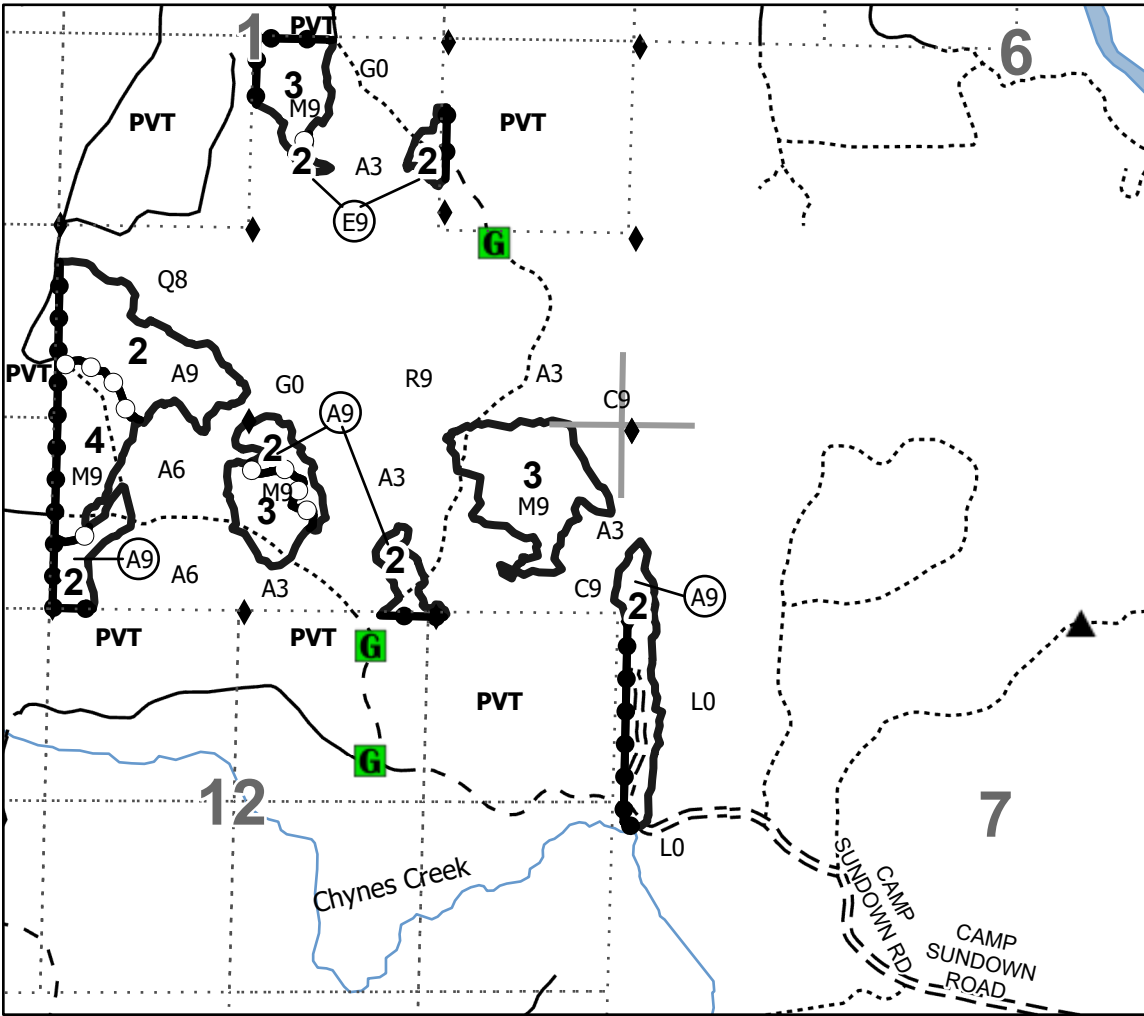
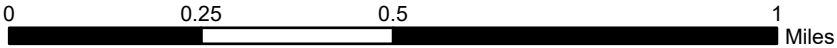
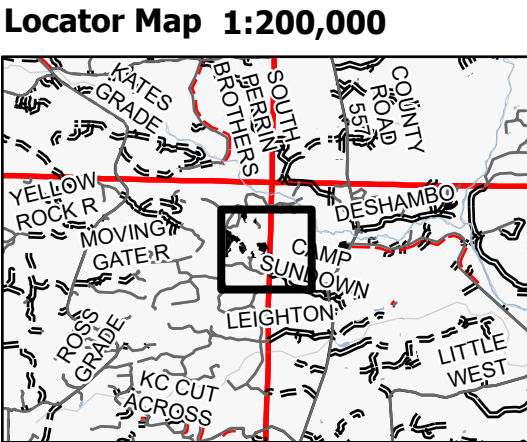
Cover Type			
A = Aspen	J = Jack Pine	O = Oak	U = Upland Brush
B = Paper Birch	K = Rock	P = Lowland Poplar	UM = Upland Mix Forest
C = Cedar	L = Lowland Brush	Q = Mixed Swamp Conifer	V = Bog or Marsh
D = Treed Bog	LM = Lowland Mix Forest	R = Red Pine	W = White Pine
E = Swamp Hardwoods	M = Maple, Beech, Birch	S = Black Spruce	X = Non Stocked
F = Spruce/Fir	MC = Mixed Conifer	T = Tamarack	Y = Sand
G = Grass	MD = Mixed Deciduous	Z = Water	
H = Hemlock	N = Marsh		

Density	
0 = Non Stocked	5 = Pole Timber Medium
1 = Seedling Sapling Poor	6 = Pole Timber Well
2 = Seedling Sapling Medium	7 = Saw Timber Poor
3 = Seedling Sapling Well	8 = Saw Timber Medium
4 = Pole Timber Poor	9 = Saw Timber Well

PU #	Acres
1	15.3
2	39
3	28.3
4	10.6

Lollipop Man

93.2 Acres



Legend	
	Against State (Red)
	Private Line (Blue)
	Payment Unit (Yellow)
	Adjacent Private Land
	Lakes and Rivers
	Perennial River
	Forest Access Route
	Administrative Access Only
	Paved Road
	Private Gravel/Dirt
	Survey Grade Corner
	Berm
	Gate
	Section Corner

Use QR Code to open Map in App

