



TIMBER SALE MAP

This information provided by authority of Part 525, 1994 PA 451, as amended.

Sale Number 32-013-24	Date 10/14/2024	
Scale 1:15,840	Page 2	Of 2

Forest Management Unit Gwinn Mgt Unit	County Marquette	Mapped By: Brodeur Cruised By: Gwinn Staff
--	---------------------	---

Township 43N	Range 25W /	Section(s) and Subdivision(s)	8 N1/2NW; Sec. 1 SESW,NWSE,S1/2SE; Sec. 12 NENW,N1/2NE; Sec. 5 SWSW; Sec. 7 W1/2NW,NWSW; Sec.
-----------------	----------------	----------------------------------	--

Cover Type			
A = Aspen	J = Jack Pine	O = Oak	U = Upland Brush
B = Paper Birch	K = Rock	P = Lowland Poplar	UM = Upland Mix Forest
C = Cedar	L = Lowland Brush	Q = Mixed Swamp Conifer	V = Bog or Marsh
D = Treed Bog	LM = Lowland Mix Forest	R = Red Pine	W = White Pine
E = Swamp Hardwoods	M = Maple, Beech, Birch	S = Black Spruce	X = Non Stocked
F = Spruce/Fir	MC = Mixed Conifer	T = Tamarack	Y = Sand
G = Grass	MD = Mixed Deciduous	Z = Water	
H = Hemlock	N = Marsh		

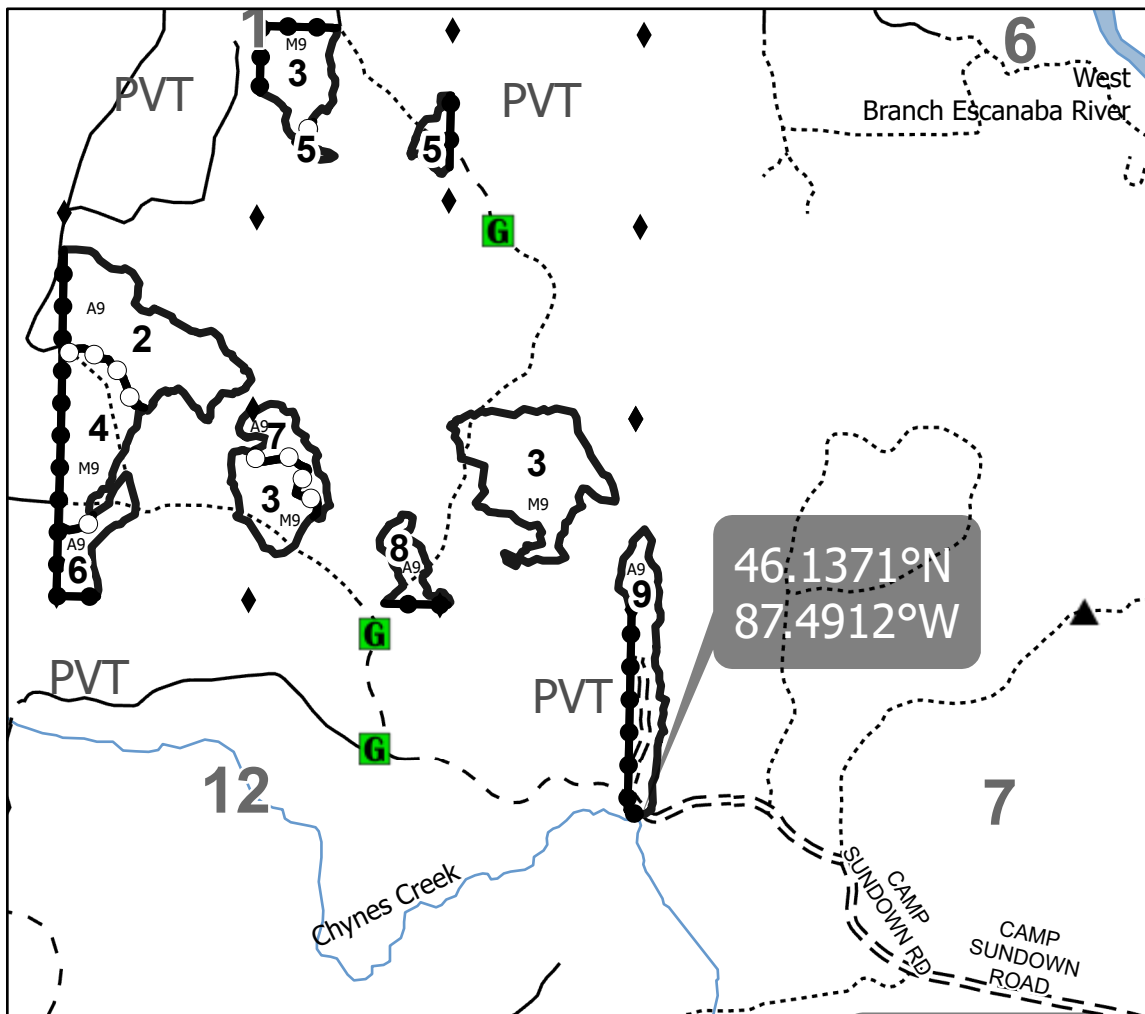
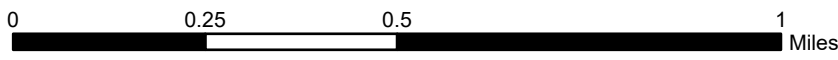
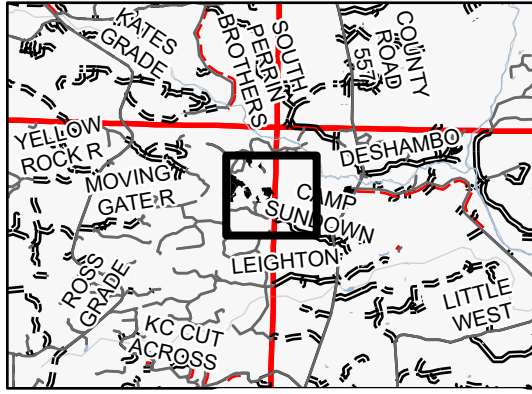
Density	
0 = Non Stocked	5 = Pole Timber Medium
1 = Seedling Sapling Poor	6 = Pole Timber Well
2 = Seedling Sapling Medium	7 = Saw Timber Poor
3 = Seedling Sapling Well	8 = Saw Timber Medium
4 = Pole Timber Poor	9 = Saw Timber Well

PU #	Acres	PU #	Acres
1	15.3	6	4.3
2	16.6	7	4
3	28.3	8	3
4	10.6	9	8.6
5	2.4		

Lollipop Man

93.2 Acres

Locator Map 1:200,000



Legend

- Against State (Red)
- Private Line (Blue)
- Payment Unit (Yellow)
- Lakes and Rivers
- Forest Access Route
- Administrative Access Only
- Paved Road
- Private Gravel/Dirt
- Perennial River
- Survey Grade Corner
- Berm
- Gate

Use QR Code to open Map in App