



TIMBER SALE MAP

This information provided by authority of Part 525, 1994 PA 451, as amended.

Sale Number 32-005-24	Date 08/29/2024
Scale 1:5,000	Page 2
	Of 2

Forest Management Unit Gwinn Mgt Unit	County Marquette	Mapped By: Rosten
		Cruised By: Contractor, Gwinn Personnel

Township 44N	Range 23W	Section(s) and Subdivision(s) Sec. 12 N1/2SE,SWSE; Sec. 12 NENW,S1/2NW,S1/2NE,NESW; Sec. 13 E1/2SE;
-----------------	--------------	---

Cover Type			
A = Aspen	J = Jack Pine	O = Oak	U = Upland Brush
B = Paper Birch	K = Rock	P = Lowland Poplar	UM = Upland Mix Forest
C = Cedar	L = Lowland Brush	Q = Mixed Swamp Conifer	V = Bog or Marsh
D = Treed Bog	LM = Lowland Mix Forest	R = Red Pine	W = White Pine
E = Swamp Hardwoods	M = Maple, Beech, Birch	S = Black Spruce	X = Non Stocked
F = Spruce/Fir	MC = Mixed Conifer	T = Tamarack	Y = Sand
G = Grass	MD = Mixed Deciduous	Z = Water	
H = Hemlock	N = Marsh		

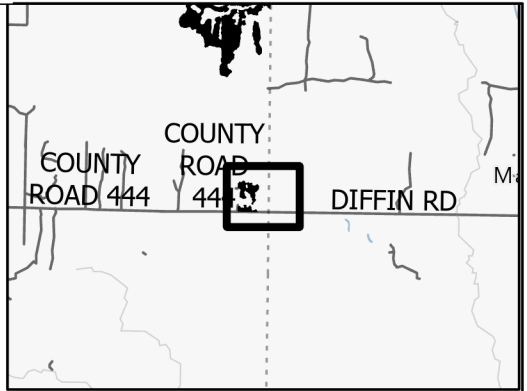
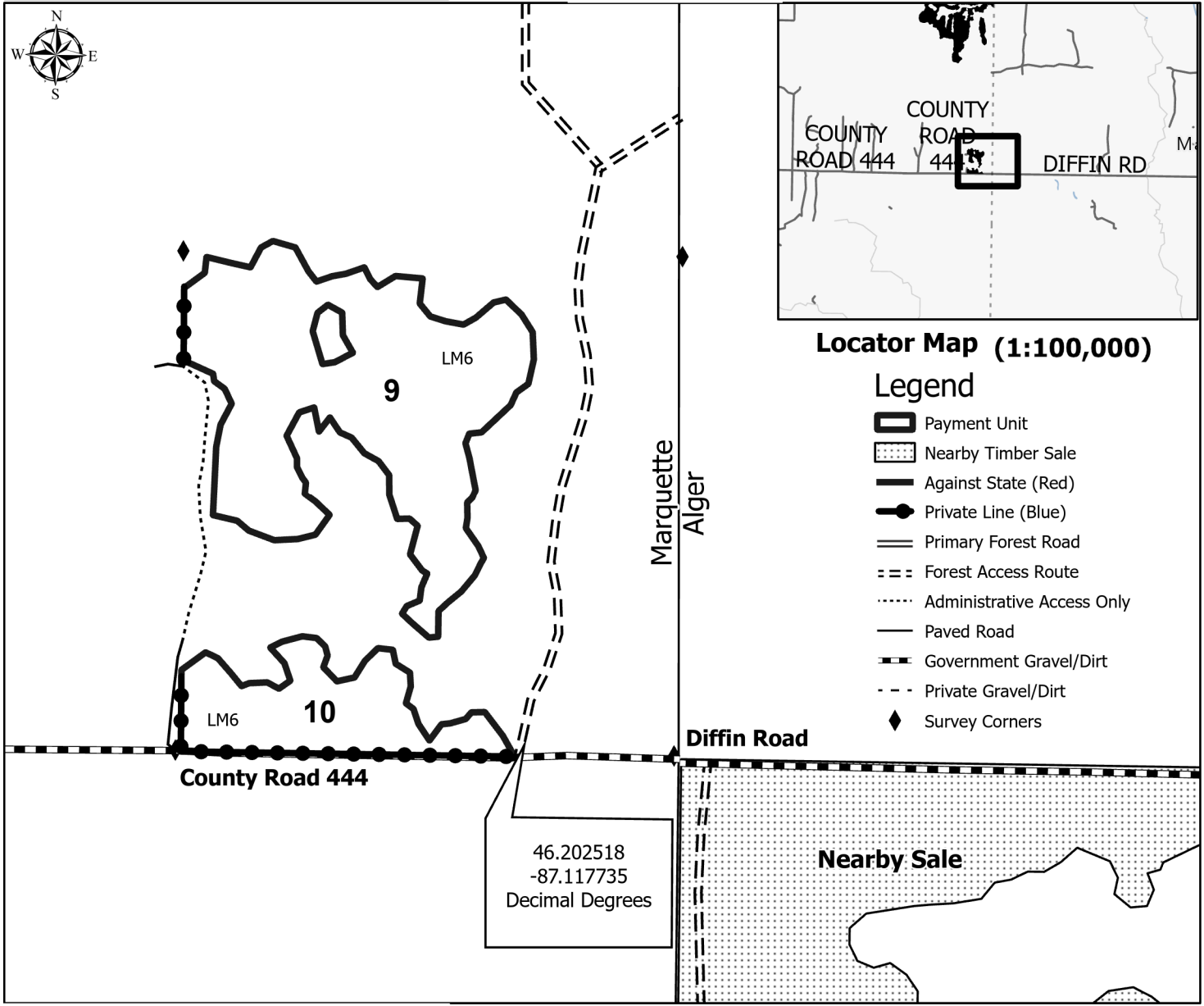
Density	
0 = Non Stocked	5 = Pole Timber Medium
1 = Seedling Sapling Poor	6 = Pole Timber Well
2 = Seedling Sapling Medium	7 = Saw Timber Poor
3 = Seedling Sapling Well	8 = Saw Timber Medium
4 = Pole Timber Poor	9 = Saw Timber Well



PU #	Acres	PU #	Acres	PU #	Acres	PU #	Acres
1	26.5	4	7.6	7	13.4	10	3.8
2	16	5	5.1	8	1.4		
3	30.5	6	13.9	9	11		

Swale Hopper Hardwoods Compartment 8 129.2 Acres

Use QR Code to open Map in App



Locator Map (1:100,000)

Legend

- Payment Unit
- Nearby Timber Sale
- Against State (Red)
- Private Line (Blue)
- Primary Forest Road
- Forest Access Route
- Administrative Access Only
- Paved Road
- Government Gravel/Dirt
- Private Gravel/Dirt
- Survey Corners

46.202518
-87.117735
Decimal Degrees

Nearby Sale