

**TIMBER SALE MAP**

This information provided by authority of Part 525, 1994 PA 451, as amended.

Sale Number

32-013-25

Date

08/08/2025

Forest Management Unit

Gwinn Mgt Unit

County

Marquette

Mapped By: Siler

Cruised By: Gould & Siler

Scale

1:13,932

Page

1

Of

1

Township

44N

Range

26W

Section(s) and

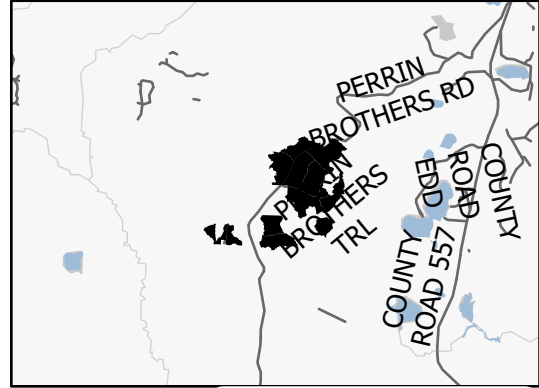
Subdivision(s) Sec. 11 NE,S1/2SW,NESE,S1/2SE; Sec. 12 W1/2NW,W1/2SW; Sec. 14 NENW,NWNE;

Cover Type

A = Aspen	J = Jack Pine	O = Oak	U = Upland Brush
B = Paper Birch	K = Rock	P = Lowland Poplar	UM = Upland Mix Forest
C = Cedar	L = Lowland Brush	Q = Mixed Swamp Conifer	V = Bog or Marsh
D = Treed Bog	LM = Lowland Mix Forest	R = Red Pine	W = White Pine
E = Swamp Hardwoods	M = Maple, Beech, Birch	S = Black Spruce	X = Non Stocked
F = Spruce/Fir	MC = Mixed Conifer	T = Tamarack	Y = Sand
G = Grass	MD = Mixed Deciduous	Z = Water	
H = Hemlock	N = Marsh		

Density

0 = Non Stocked	5 = Pole Timber Medium
1 = Seedling Sapling Poor	6 = Pole Timber Well
2 = Seedling Sapling Medium	7 = Saw Timber Poor
3 = Seedling Sapling Well	8 = Saw Timber Medium
4 = Pole Timber Poor	9 = Saw Timber Well

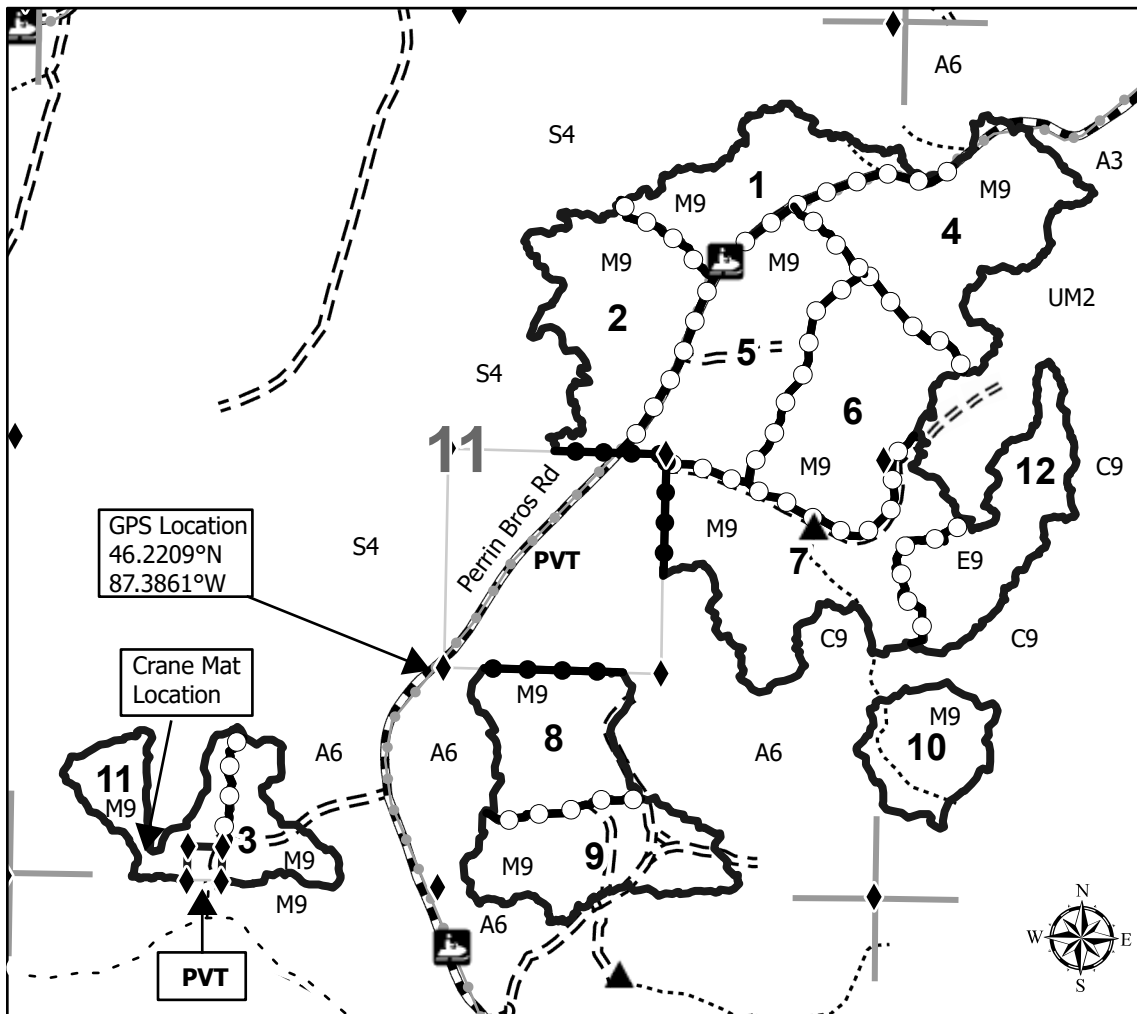
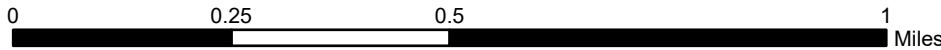
Locator Map 1:100,000

Payment Unit Number	Acres	Payment Unit Number	Acres
1	16.5	7	29.9
2	23.1	8	15.9
3	8	9	18.2
4	27.3	10	11
5	25.5	11	9.8
6	24.9	12	17

PERRIN BEAR

COMPARTMENT 49

227.1 ACRES

**Legend**

- Against State (Red)
- Private Line (Blue)
- Payment Unit (Yellow)
- State Boundary
- Snowmobile/ORV Trail
- Forest Access Route
- Administrative Access Only
- Paved Road
- Government Gravel/Dirt
- Private Gravel/Dirt
- Survey Grade Corner
- Berm
- Section Corner

