

**TIMBER SALE MAP**

This information provided by authority of Part 525, 1994 PA 451, as amended.

Sale Number

**32-014-25**

Date

**08/29/2025**

Forest Management Unit

Gwinn Mgt Unit

County

Marquette

Mapped By: Fischer

Cruised By: Fischer, Gould, Siler

Scale

1:17,000

Page

1

Of

2

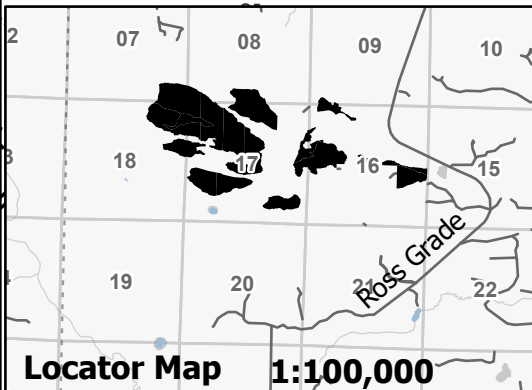
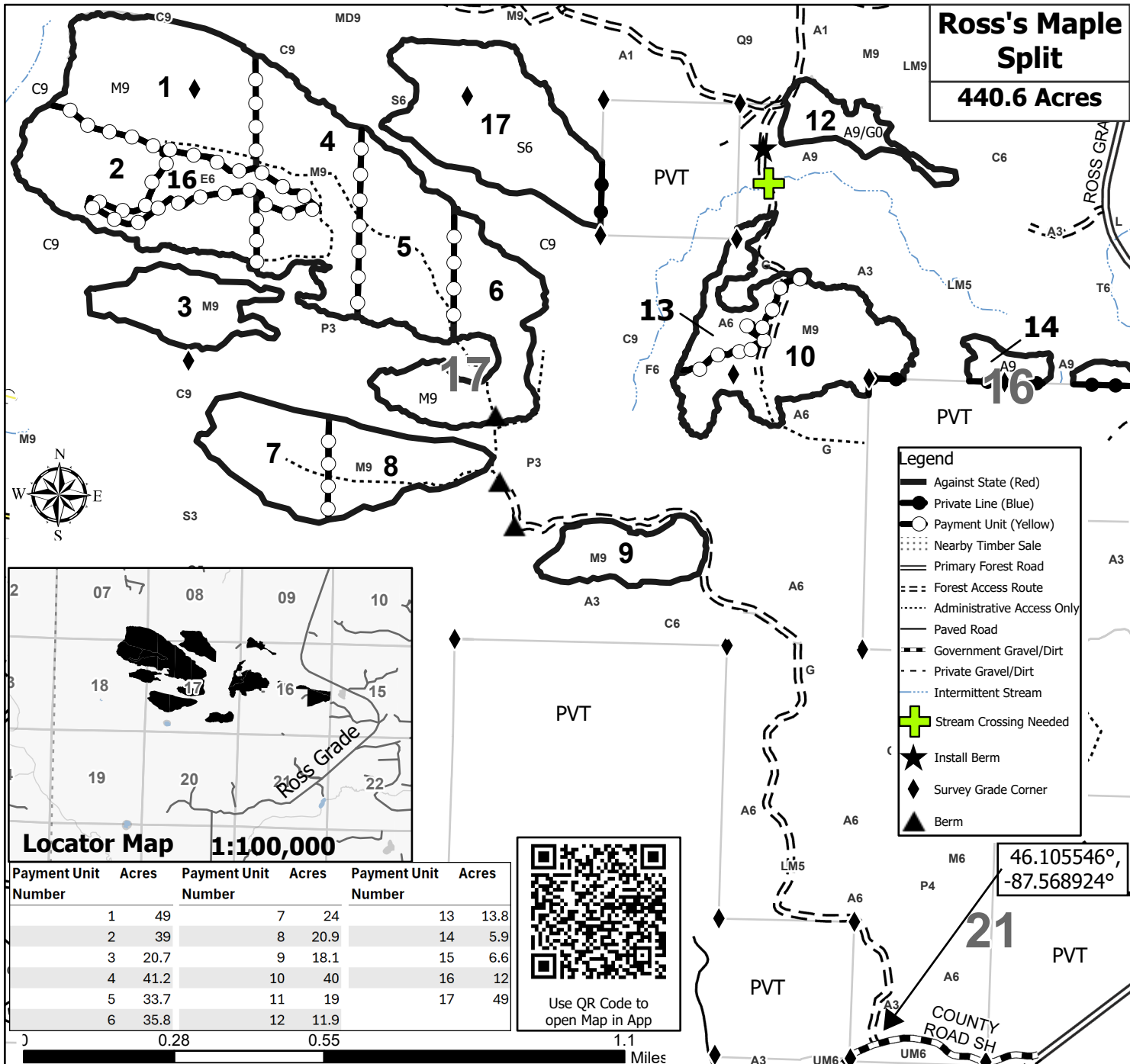
Township	Range	Section(s) and Subdivision(s)
43N	26W	SESE; Sec. 8 S1/2SW,SWSE; Sec. 9 SWSW; Sec. 16 NW,S1/2NE,NWSW,NESE; Sec. 17 NW,NWNE,S1/2NE,SW,SE; Sec. 18 N1/2NE,SENE; Sec. 7

**Cover Type**

A = Aspen	J = Jack Pine	O = Oak	U = Upland Brush
B = Paper Birch	K = Rock	P = Lowland Poplar	UM = Upland Mix Forest
C = Cedar	L = Lowland Brush	Q = Mixed Swamp Conifer	V = Bog or Marsh
D = Treed Bog	LM = Lowland Mix Forest	R = Red Pine	W = White Pine
E = Swamp Hardwoods	M = Maple, Beech, Birch	S = Black Spruce	X = Non Stocked
F = Spruce/Fir	MC = Mixed Conifer	T = Tamarack	Y = Sand
G = Grass	MD = Mixed Deciduous		Z = Water
H = Hemlock	N = Marsh		

**Density**

0 = Non Stocked	5 = Pole Timber Medium
1 = Seedling Sapling Poor	6 = Pole Timber Well
2 = Seedling Sapling Medium	7 = Saw Timber Poor
3 = Seedling Sapling Well	8 = Saw Timber Medium
4 = Pole Timber Poor	9 = Saw Timber Well

**Compartment 32062****Ross's Maple Split****440.6 Acres**

Payment Unit Number	Acres	Payment Unit Number	Acres	Payment Unit Number	Acres
1	49	7	24	13	13.8
2	39	8	20.9	14	5.9
3	20.7	9	18.1	15	6.6
4	41.2	10	40	16	12
5	33.7	11	19	17	49
6	35.8	12	11.9		



Use QR Code to open Map in App

46.105546°  
-87.568924°**21**

PVT

COUNTY ROAD SH

Miles