



TIMBER SALE MAP

This information provided by authority of Part 525, 1994 PA 451, as amended.

Sale Number 32-001-25	Date 12/16/2024	
Scale 1:15,840	Page 1	Of 1

Forest Management Unit Gwinn Mgt Unit	County Marquette	Mapped By: Jacob Siler Cruised By: Jacob Siler
--	---------------------	---

Township 45N	Range 26W/27W	Section(s) and Subdivision(s) Sec. 11 SESE; Sec. 12 S1/2SW,SESE; Sec. 13 N1/2NW; Sec. 18 NWNW; Sec. 7 NWSW,S1/2SW;
-----------------	------------------	--

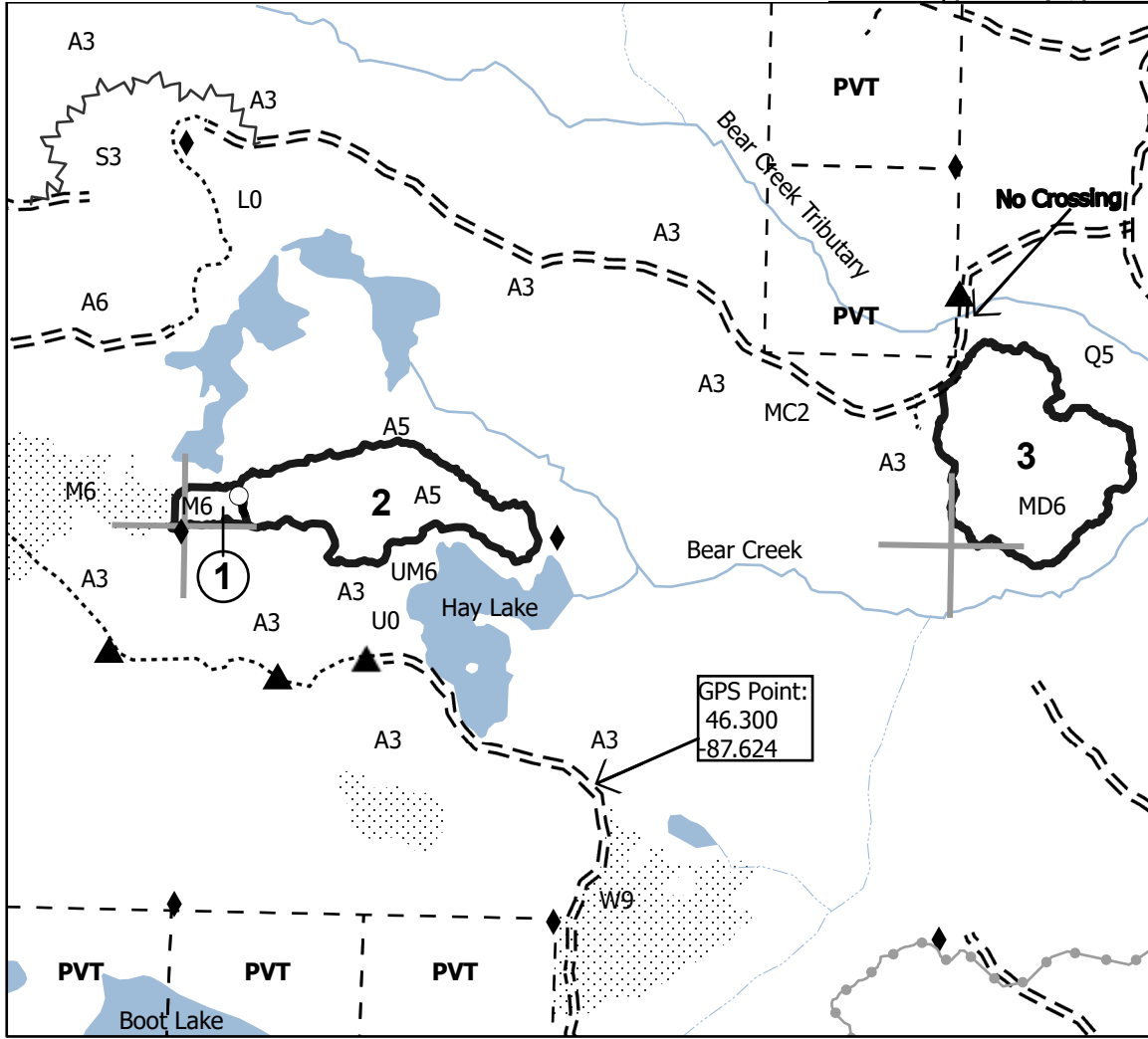
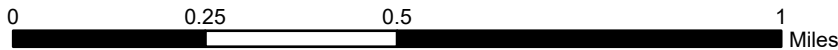
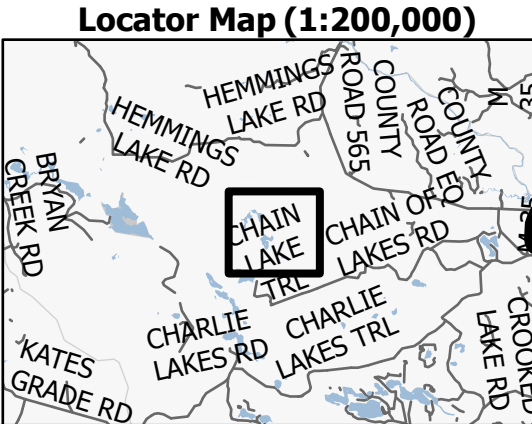
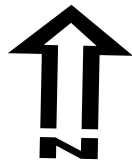
Cover Type			
A = Aspen	J = Jack Pine	O = Oak	U = Upland Brush
B = Paper Birch	K = Rock	P = Lowland Poplar	UM = Upland Mix Forest
C = Cedar	L = Lowland Brush	Q = Mixed Swamp Conifer	V = Bog or Marsh
D = Treed Bog	LM = Lowland Mix Forest	R = Red Pine	W = White Pine
E = Swamp Hardwoods	M = Maple, Beech, Birch	S = Black Spruce	X = Non Stocked
F = Spruce/Fir	MC = Mixed Conifer	T = Tamarack	Y = Sand
G = Grass	MD = Mixed Deciduous	Z = Water	
H = Hemlock	N = Marsh		

Density	
0 = Non Stocked	5 = Pole Timber Medium
1 = Seedling Sapling Poor	6 = Pole Timber Well
2 = Seedling Sapling Medium	7 = Saw Timber Poor
3 = Seedling Sapling Well	8 = Saw Timber Medium
4 = Pole Timber Poor	9 = Saw Timber Well

PU #	Acres
1	2.7
2	22.9
3	31.4

Skid Plate

57.0 Acres



Legend

- Against State (Red)
- Payment Unit (Yellow)
- Primary Forest Road
- Forest Access Route
- Administrative Access Only
- Paved Road
- Government Gravel/Dirt
- Private Gravel/Dirt
- Possible Road Reroute
- Survey Grade Corner
- Berm
- Section Corner
- Nearby Timber Sale
- Private Parcel
- Recreational Trail
- Lakes and Rivers
- Intermittent Stream
- Perennial River

GPS Point:
46.300
-87.624

