



**TIMBER SALE MAP**

This information provided by authority of Part 525, 1994 PA 451, as amended.

Sale Number

**32-015-25**

Date

**08/13/2025**

Forest Management Unit

Gwinn Mgt Unit

County

Marquette

Mapped By: Matt Yeo

Cruised By: Gwinn Staff

Scale

1:13,000

Page

1

Of

2

Township

43N

Range

25W

Section(s) and

Subdivision(s)

N1/2NW,SENW,W1/2NE,NESW,NWSE; Sec. 32 S1/2SE;  
Sec. 28 SWNW; Sec. 29 S1/2NW,NWNE,S1/2NE,SESW,SWSE; Sec. 30 SENE; Sec. 32

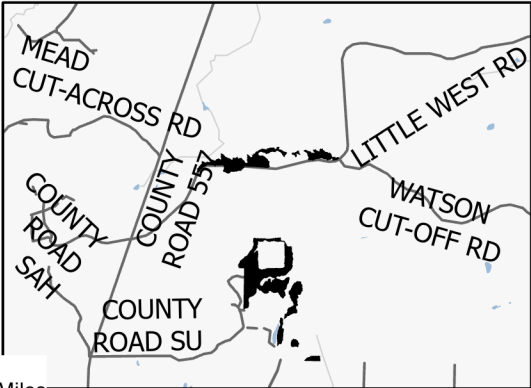
**Cover Type**

A = Aspen	J = Jack Pine	O = Oak	U = Upland Brush
B = Paper Birch	K = Rock	P = Lowland Poplar	UM = Upland Mix Forest
C = Cedar	L = Lowland Brush	Q = Mixed Swamp Conifer	V = Bog or Marsh
D = Treed Bog	LM = Lowland Mix Forest	R = Red Pine	W = White Pine
E = Swamp Hardwoods	M = Maple, Beech, Birch	S = Black Spruce	X = Non Stocked
F = Spruce/Fir	MC = Mixed Conifer	T = Tamarack	Y = Sand
G = Grass	MD = Mixed Deciduous	Z = Water	
H = Hemlock	N = Marsh		

**Density**

0 = Non Stocked	5 = Pole Timber Medium
1 = Seedling Sapling Poor	6 = Pole Timber Well
2 = Seedling Sapling Medium	7 = Saw Timber Poor
3 = Seedling Sapling Well	8 = Saw Timber Medium
4 = Pole Timber Poor	9 = Saw Timber Well

**Locator Map 1:100,000**

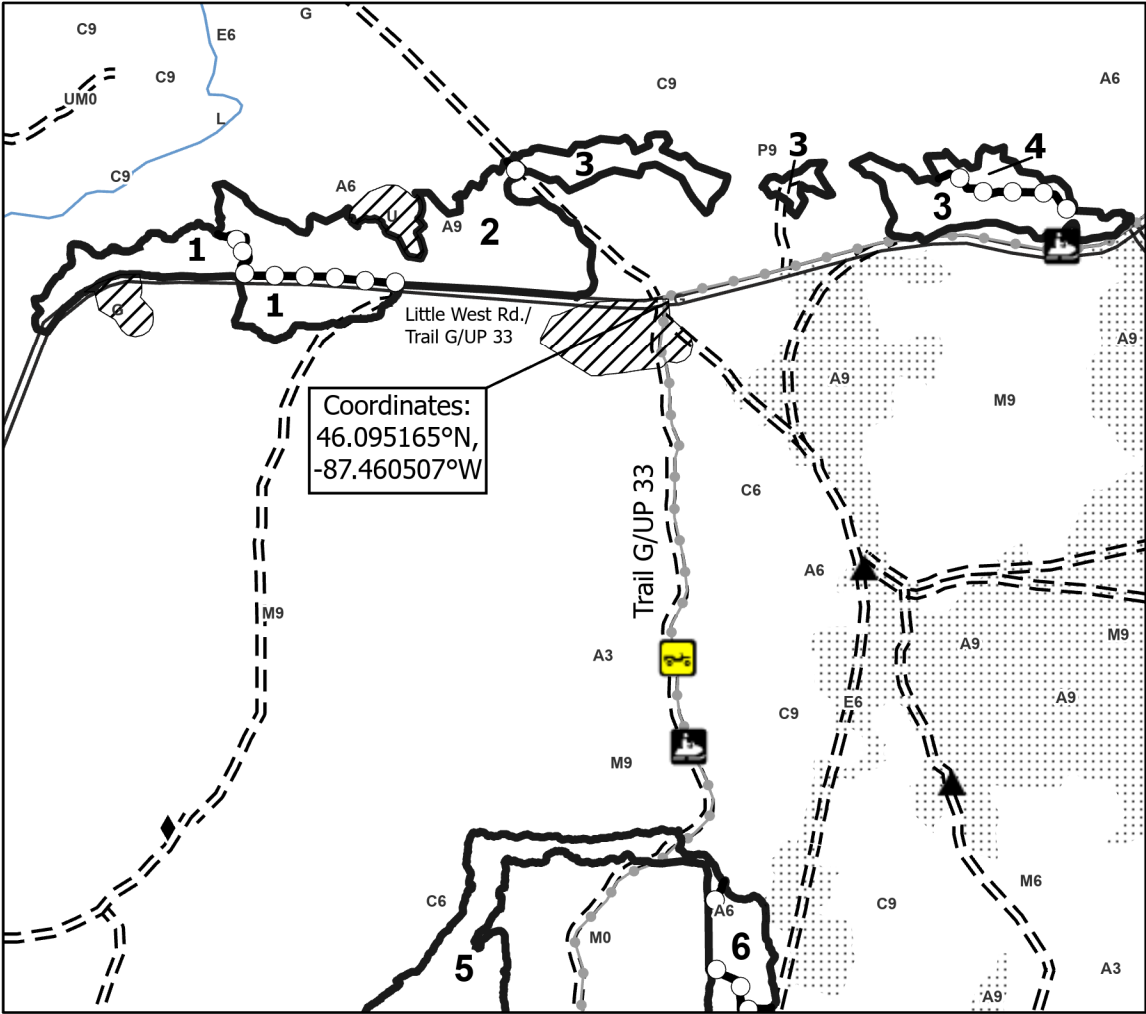
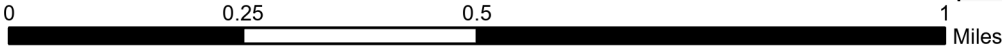


Payment Unit Number	Acres	Payment Unit Number	Acres
1	11.2	7	32
2	19.2	8	13.4
3	13	9	12.6
4	2.5	10	5.3
5	23.4	11	2.3
6	4.2	12	3.1

**Two Cup Cats**

**142.3 Acres**

**COMPARTMENT 70**



**Legend**

- Against State (Red)
- Payment Unit (Yellow)
- ▨ Special Protection Area
- Recreational Trails
- == Primary Forest Road
- - - Forest Access Route
- ORV Route
- Snowmobile
- ◆ Survey Grade Corner
- ▲ Berm
- ⋯ Nearby Timber Sale

Use QR Code to  
open Map in App

