



TIMBER SALE MAP

This information provided by authority of Part 525, 1994 PA 451, as amended.

Sale Number

32-015-25

Date

07/16/2025

Forest Management Unit

Gwinn Mgt Unit

County

Marquette

Mapped By: Matt Yeo

Cruised By: Gwinn Staff

Scale

1:13,000

Page

1

Of

2

Township
43N

Range
25W

Section(s) and
Subdivision(s) N1/2NW,SENW,NE,NESW,SE;
Sec. 28 SWNW; Sec. 29 S1/2NW,NWNE,S1/2NE,SESW,SWSE; Sec. 30 SENE; Sec. 32

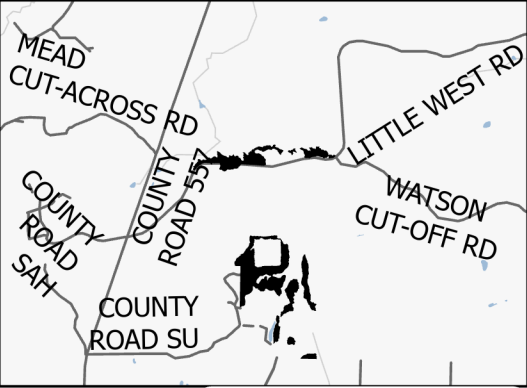
Cover Type

A = Aspen	J = Jack Pine	O = Oak	U = Upland Brush
B = Paper Birch	K = Rock	P = Lowland Poplar	UM = Upland Mix Forest
C = Cedar	L = Lowland Brush	Q = Mixed Swamp Conifer	V = Bog or Marsh
D = Treed Bog	LM = Lowland Mix Forest	R = Red Pine	W = White Pine
E = Swamp Hardwoods	M = Maple, Beech, Birch	S = Black Spruce	X = Non Stocked
F = Spruce/Fir	MC = Mixed Conifer	T = Tamarack	Y = Sand
G = Grass	MD = Mixed Deciduous	Z = Water	
H = Hemlock	N = Marsh		

Density

0 = Non Stocked	5 = Pole Timber Medium
1 = Seedling Sapling Poor	6 = Pole Timber Well
2 = Seedling Sapling Medium	7 = Saw Timber Poor
3 = Seedling Sapling Well	8 = Saw Timber Medium
4 = Pole Timber Poor	9 = Saw Timber Well

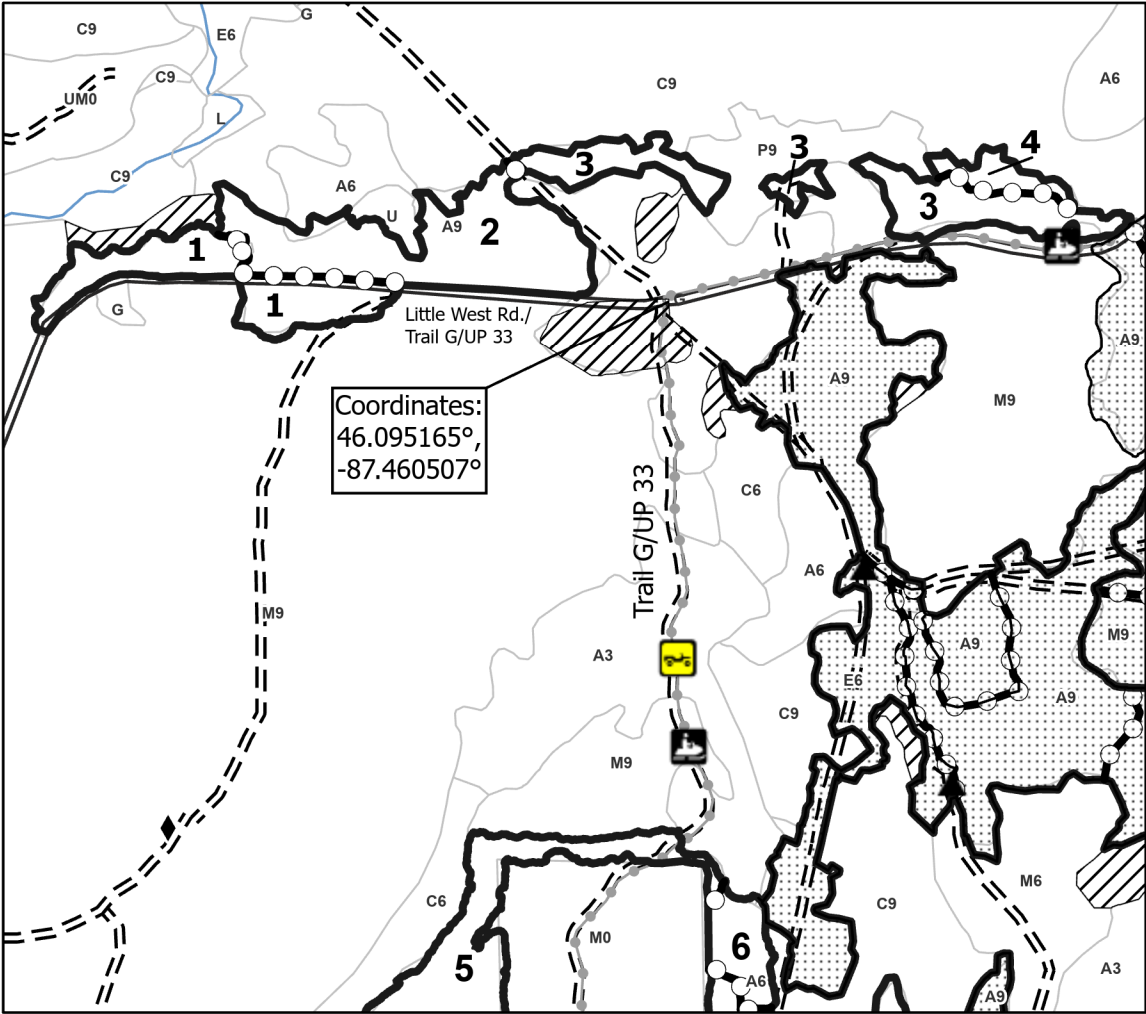
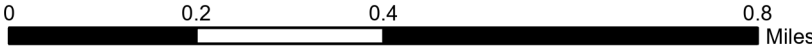
Locator Map 1:100,000



Payment Unit Number	Acres	Payment Unit Number	Acres	Payment Unit Number	Acres
1	11.2	6	4.2	11	5.3
2	19.2	7	32.1	12	2.3
3	13	8	13.4	13	3.1
4	2.5	9	12.6		
5	23.3	10	13.7		

Two Cup Cats

156.0 Acres



Legend

- Payment Unit
- Against State (Red)
- Payment Unit (Yellow)
- Retention Areas
- Recreational Trails
- Primary Forest Road
- Forest Access Route
- ORV Route
- Snowmobile
- Survey Grade Corner
- Berm
- Nearby Timber Sale

Use QR Code to
open Map in App

