



**TIMBER SALE MAP**

This information provided by authority of Part 525, 1994 PA 451, as amended.

Sale Number

**32-007-26**

Date

**12/18/2025**

Forest Management Unit

Gwinn Mgt Unit

County

Marquette

Mapped By: Yeo

Cruised By: Gwinn Staff

Scale

**1:15,840**

Page

**1**

Of

**1**

Township

**43N**

Range

**24W**

Section(s) and

Subdivision(s) **Sec. 18 S1/2SE; Sec. 19 N1/2NE; Sec. 20 NWNW,SESW; Sec. 29 NENW;**

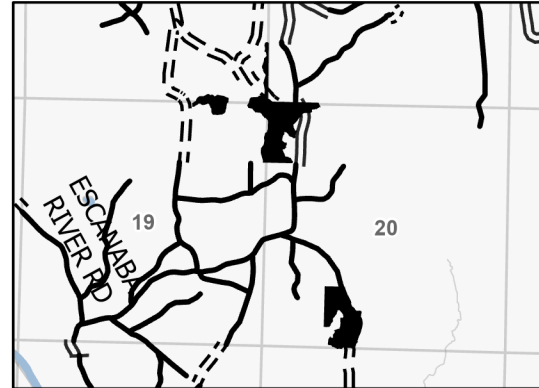
**Cover Type**

A = Aspen	J = Jack Pine	O = Oak	U = Upland Brush
B = Paper Birch	K = Rock	P = Lowland Poplar	UM = Upland Mix Forest
C = Cedar	L = Lowland Brush	Q = Mixed Swamp Conifer	V = Bog or Marsh
D = Treed Bog	LM = Lowland Mix Forest	R = Red Pine	W = White Pine
E = Swamp Hardwoods	M = Maple, Beech, Birch	S = Black Spruce	X = Non Stocked
F = Spruce/Fir	MC = Mixed Conifer	T = Tamarack	Y = Sand
G = Grass	MD = Mixed Deciduous	Z = Water	
H = Hemlock	N = Marsh		

**Density**

0 = Non Stocked	5 = Pole Timber Medium
1 = Seedling Sapling Poor	6 = Pole Timber Well
2 = Seedling Sapling Medium	7 = Saw Timber Poor
3 = Seedling Sapling Well	8 = Saw Timber Medium
4 = Pole Timber Poor	9 = Saw Timber Well

**Locator Map 1:50,000**

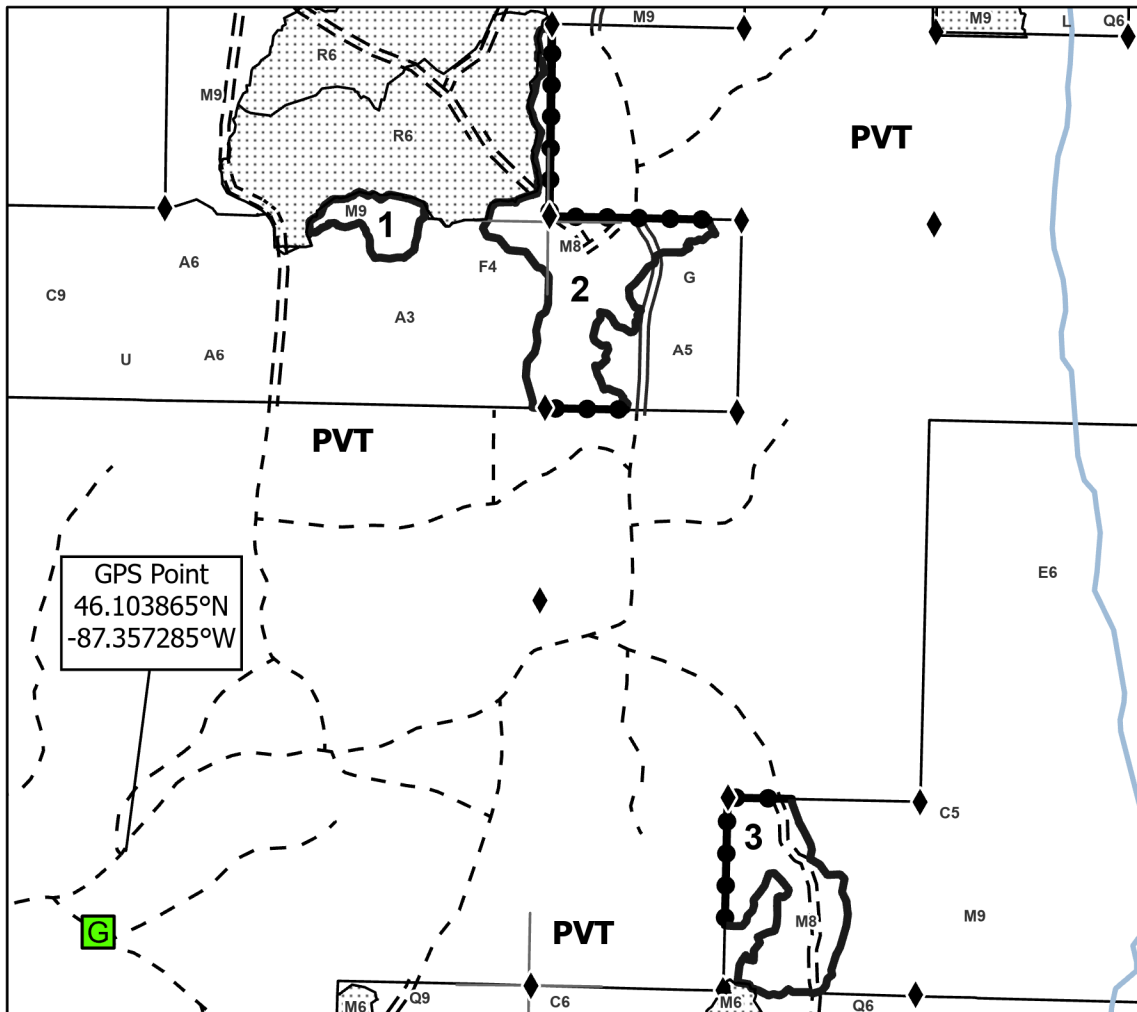


Payment Unit Number	Acres
1	4.8
2	25.7
3	17.9

**Vicious Ditches**

**48.4 Acres**  
**Compartment 80**

0 0.25 0.5 1 Miles



**Legend**

- Payment Unit
- State Forests
- Against State (Red)
- Private Line (Blue)
- Streams
- Primary Forest Road
- Forest Access Route
- Private Gravel/Dirt
- Survey Grade Corner
- Gate
- Nearby Timber Sale selection

Use QR Code to  
open Map in App

