



TIMBER SALE MAP

This information provided by authority of Part 525, 1994 PA 451, as amended.

Sale Number

32-004-26

Date

05/02/2025

Forest Management Unit

Gwinn Mgt Unit

County

Marquette

Mapped By: Rosten

Cruised By:

Scale

1:10,000

Page

1

Of

1

Township

45N

Range

26W

Section(s) and

Subdivision(s) **Sec. 17 S1/2NW, SWNE, SW, S1/2SE; Sec. 20 N1/2NE;**

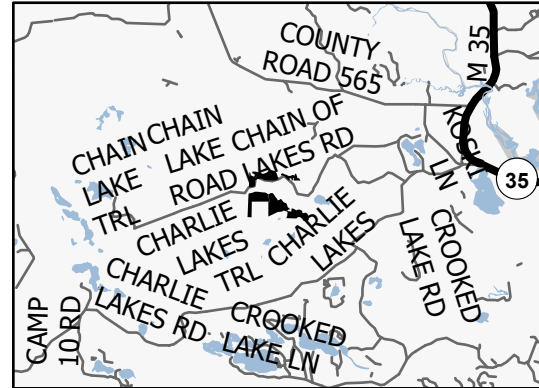
Cover Type

A = Aspen	J = Jack Pine	O = Oak	U = Upland Brush
B = Paper Birch	K = Rock	P = Lowland Poplar	UM = Upland Mix Forest
C = Cedar	L = Lowland Brush	Q = Mixed Swamp Conifer	V = Bog or Marsh
D = Treed Bog	LM = Lowland Mix Forest	R = Red Pine	W = White Pine
E = Swamp Hardwoods	M = Maple, Beech, Birch	S = Black Spruce	X = Non Stocked
F = Spruce/Fir	MC = Mixed Conifer	T = Tamarack	Y = Sand
G = Grass	MD = Mixed Deciduous	Z = Water	
H = Hemlock	N = Marsh		

Density

0 = Non Stocked	5 = Pole Timber Medium
1 = Seedling Sapling Poor	6 = Pole Timber Well
2 = Seedling Sapling Medium	7 = Saw Timber Poor
3 = Seedling Sapling Well	8 = Saw Timber Medium
4 = Pole Timber Poor	9 = Saw Timber Well

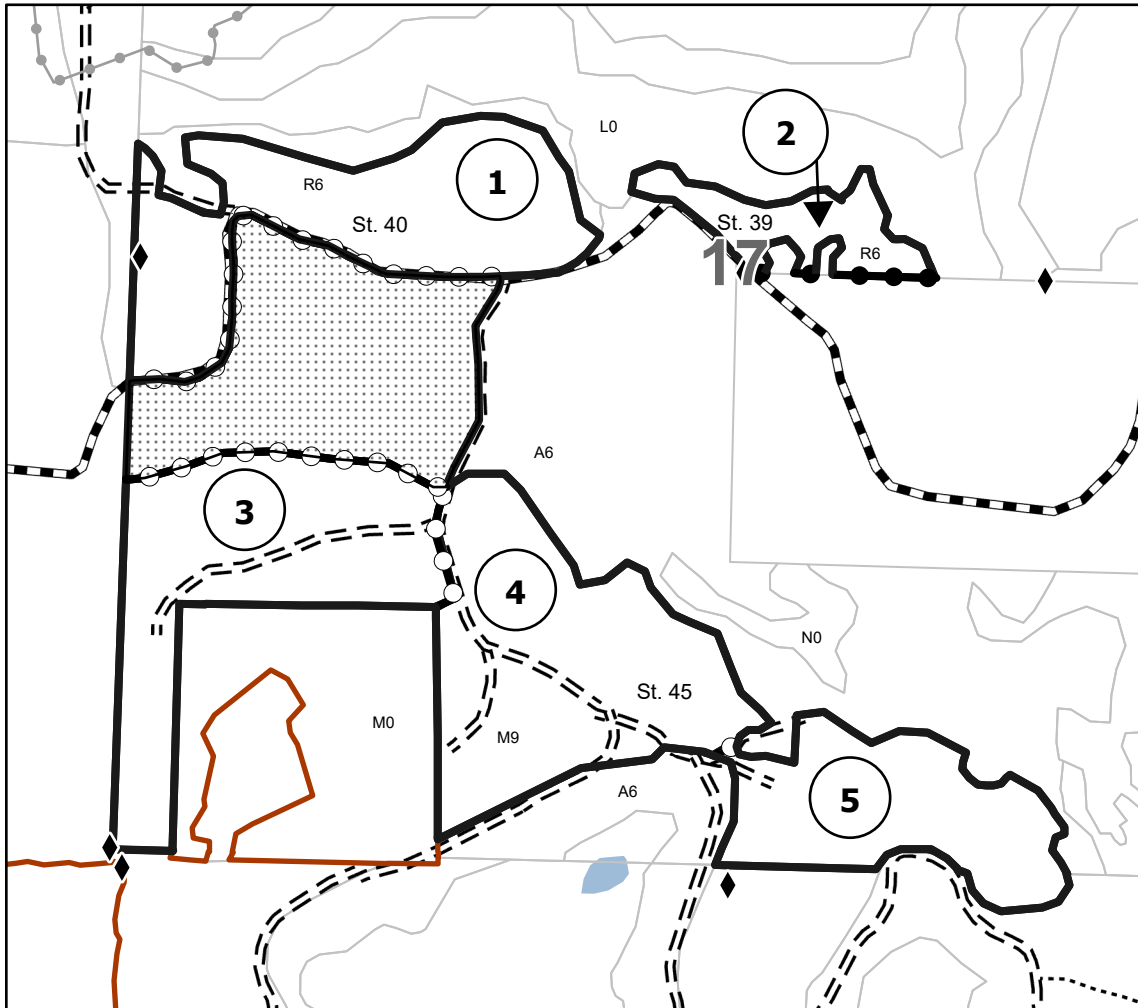
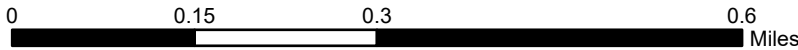
Locator Map 1:156,250



Payment Unit Number	Acres
1	26.1
2	6.7
3	25.8
4	29.2
5	17.6

Comp 34 Contract Marking

105.4 Acres



Legend

- Payment Unit
- Against State (Red)
- Private Line (Blue)
- Payment Unit (Yellow)
- Forest Access Route
- Administrative Access Only
- Government Gravel/Dirt
- Recreational Trails
- Field Grade Corner
- Survey Grade Corner
- State Prep
- # Payment Unit Number

Use QR Code to open Map in App

