



TIMBER SALE MAP

This information provided by authority of Part 525, 1994 PA 451, as amended.

Sale Number 32-001-27	Date 05/22/2026
Scale 1:22,000	Page 1
	Of 1

Forest Management Unit Gwinn Mgt Unit	County Marquette	Mapped By: Sierra Baker
		Cruised By:

Township 44N	Range 23W	Section(s) and Subdivision(s) Sec. 28 S1/2NW,S1/2NE,N1/2SW,SE; Sec. 33 SENW,NE,E1/2SW,SE;
------------------------	---------------------	---

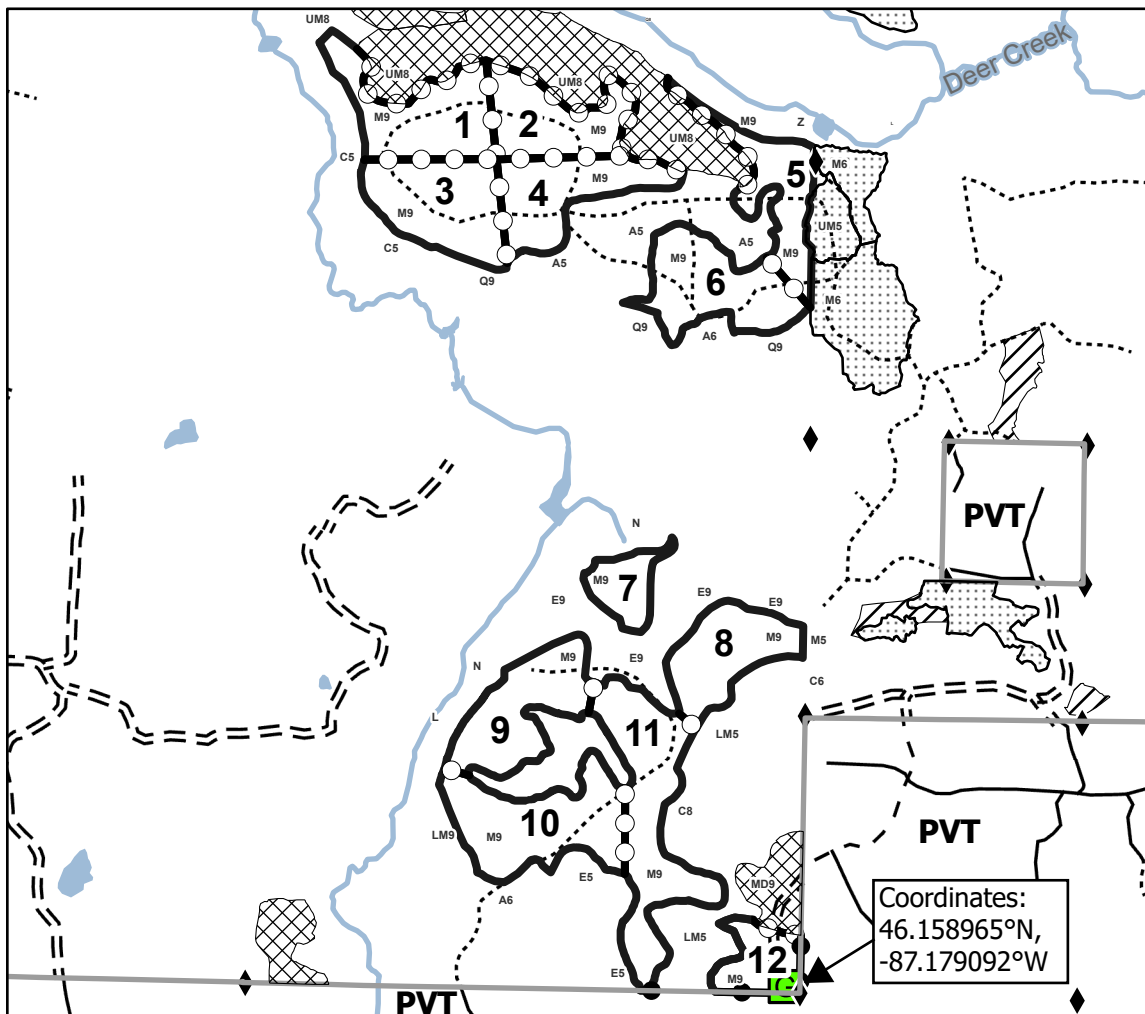
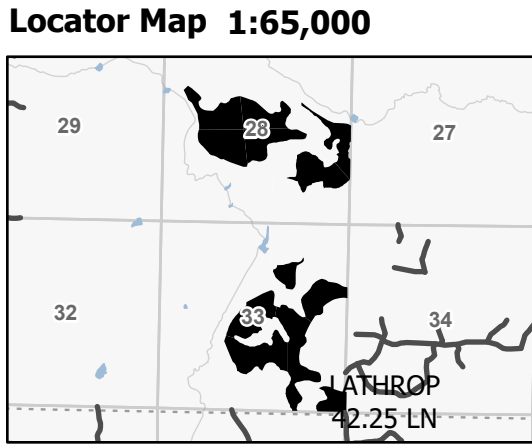
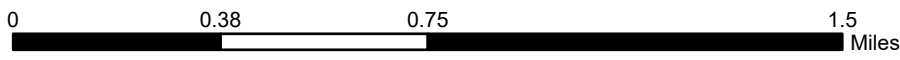
Cover Type			
A = Aspen	J = Jack Pine	O = Oak	U = Upland Brush
B = Paper Birch	K = Rock	P = Lowland Poplar	UM = Upland Mix Forest
C = Cedar	L = Lowland Brush	Q = Mixed Swamp Conifer	V = Bog or Marsh
D = Treed Bog	LM = Lowland Mix Forest	R = Red Pine	W = White Pine
E = Swamp Hardwoods	M = Maple, Beech, Birch	S = Black Spruce	X = Non Stocked
F = Spruce/Fir	MC = Mixed Conifer	T = Tamarack	Y = Sand
G = Grass	MD = Mixed Deciduous	Z = Water	
H = Hemlock	N = Marsh		

Density	
0 = Non Stocked	5 = Pole Timber Medium
1 = Seedling Sapling Poor	6 = Pole Timber Well
2 = Seedling Sapling Medium	7 = Saw Timber Poor
3 = Seedling Sapling Well	8 = Saw Timber Medium
4 = Pole Timber Poor	9 = Saw Timber Well

Payment Unit Number	Acres	Payment Unit Number	Acres
1	24	7	8.4
2	19.8	8	19.1
3	24.5	9	22.9
4	20.8	10	28.8
5	17	11	33.5
6	23.7	12	10.4

Comp 12 Contract Marking

253.0 Acres



Legend	
	Lakes and Rivers
	Against State (Red)
	Private Line (Blue)
	Payment Unit (Yellow)
	Streams
	State Boundary
	Forest Access Route
	Administrative Access Only
	Paved Road
	Private Gravel/Dirt
	Survey Corner
	Gate
	State Prep
	Nearby Timber Sale

Coordinates:
46.158965°N,
-87.179092°W

Use QR Code to open Map in App

