



### TIMBER SALE MAP

This information provided by authority of Part 525, 1994 PA 451, as amended.

Sale Number <b>32-002-27</b>	Date 05/22/2026	
Scale 1:15,940	Page 1	Of 1

Forest Management Unit Gwinn Mgt Unit	County Marquette	Mapped By: Sierra Baker
		Cruised By:

Township 45N	Range 24W	Section(s) and Subdivision(s) Sec. 25 S1/2SW,S1/2SE; Sec. 26 SE; Sec. 36 NENW,NWNE;
-----------------	--------------	---

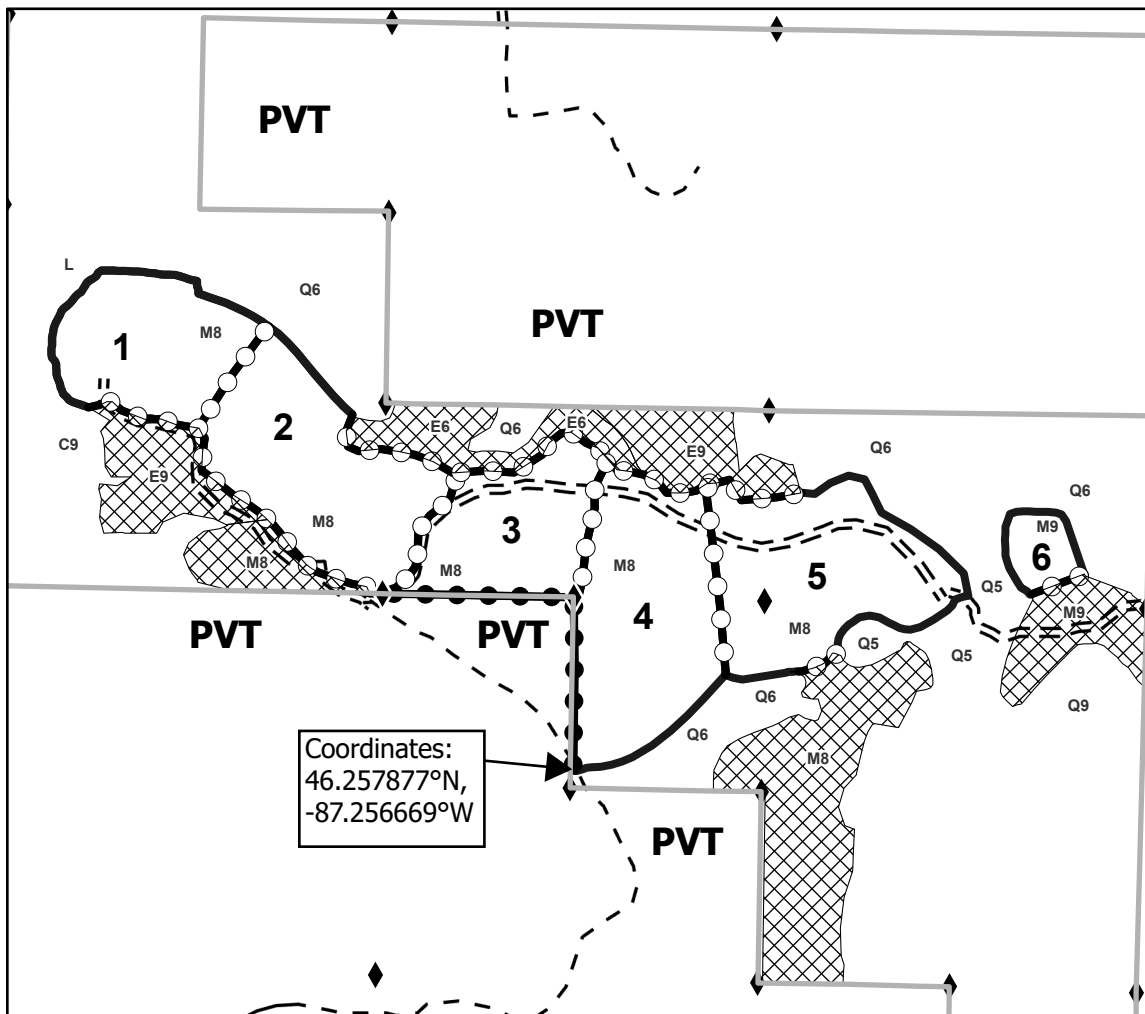
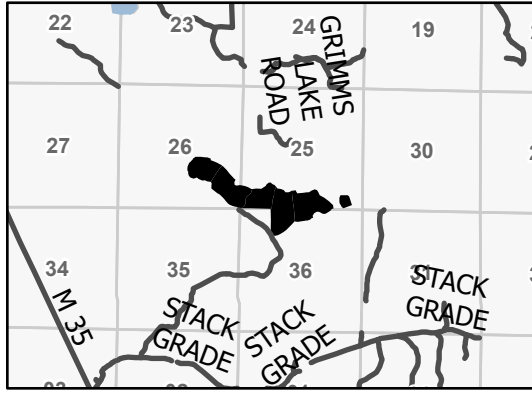
Cover Type			
A = Aspen	J = Jack Pine	O = Oak	U = Upland Brush
B = Paper Birch	K = Rock	P = Lowland Poplar	UM = Upland Mix Forest
C = Cedar	L = Lowland Brush	Q = Mixed Swamp Conifer	V = Bog or Marsh
D = Treed Bog	LM = Lowland Mix Forest	R = Red Pine	W = White Pine
E = Swamp Hardwoods	M = Maple, Beech, Birch	S = Black Spruce	X = Non Stocked
F = Spruce/Fir	MC = Mixed Conifer	T = Tamarack	Y = Sand
G = Grass	MD = Mixed Deciduous		Z = Water
H = Hemlock	N = Marsh		

Density	
0 = Non Stocked	5 = Pole Timber Medium
1 = Seedling Sapling Poor	6 = Pole Timber Well
2 = Seedling Sapling Medium	7 = Saw Timber Poor
3 = Seedling Sapling Well	8 = Saw Timber Medium
4 = Pole Timber Poor	9 = Saw Timber Well

Payment Unit Number	Acres	Payment Unit Number	Acres
1	25.9	4	39.1
2	38.1	5	37.7
3	24.6	6	5.4

**Comp 16  
Contract Marking**  
**170.8 Acres**

### Locator Map 1:100,000



Legend	
	Against State (Red)
	Private Line (Blue)
	Payment Unit (Yellow)
	Forest Access Route
	Paved Road
	Private Gravel/Dirt
	Survey Corner
	State Prep
	State Boundary

Use QR Code to open Map in App

