



TIMBER SALE MAP

This information provided by authority of Part 525, 1994 PA 451, as amended.

| | | | | | | |
|---------------------------------|--------------|--|-----------------------|--------------------|-----------|---------|
| Forest Management Unit Gwinn | | County Marquette | Mapped By McDonald | Date 09/27/2017 | Page 1 | of 1 |
| Township 44N | Range 26W | Section(s) and Subdivision(s) Sections 13, 14, 15, 22, 23, 24 | | Scale 1:31,680 | | |

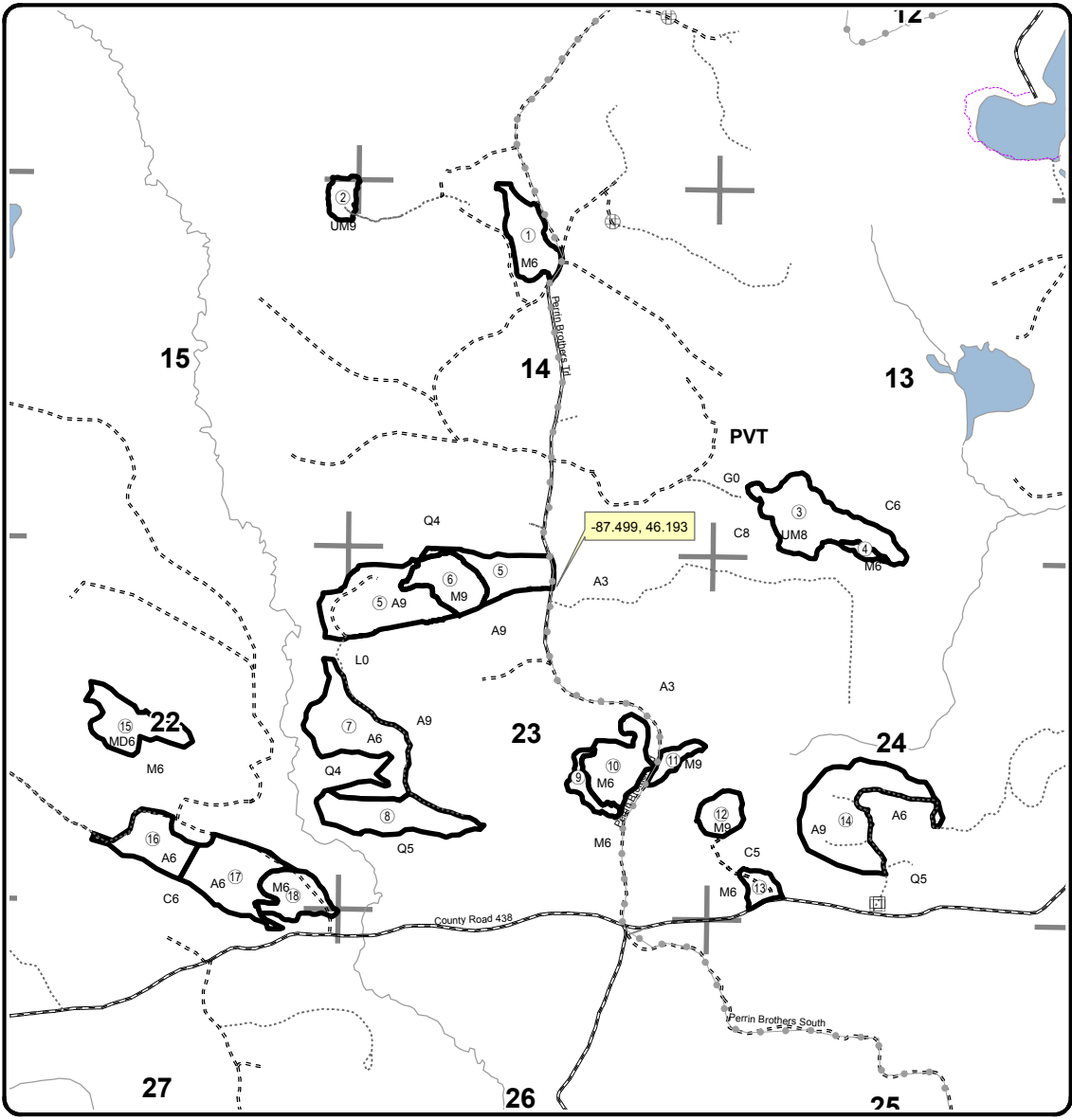
| Cover Type | | | | Density | |
|-------------------|----------------------|-------------------------|-------------------|-----------------------------|------------------------|
| A = Aspen | H = Hemlock | N = Marsh | U = Upland Brush | 0 = Non Stocked | 5 = Pole Timber Medium |
| B = Paper Birch | J = Jack Pine | O = Oak | UM = Upland Mixed | 1 = Seedling Sapling Poor | 6 = Pole Timber Well |
| C = Cedar | L = Lowland Brush | P = Lowland Poplar | V = Bog or Marsh | 2 = Seedling Sapling Medium | 7 = Saw Timber Poor |
| D = Treed Bog | LM = Lowland Mixed | Q = Mixed Swamp Conifer | W = White Pine | 3 = Seedling Sapling Well | 8 = Saw Timber Medium |
| E = Swamp Hdwoods | M = Mpl, Bch, Brch | R = Red Pine | X = Non Stocked | 4 = Pole Timber Poor | 9 = Saw Timber Well |
| F = Spruce Fir | MC = Mixed Conifer | S = Black Spruce | Z = Water | | |
| G = Grass | MD = Mixed Deciduous | T = Tamarack | | | |

| PU | Acres | PU | Acres | PU | Acres |
|----|-------|----|-------|----|-------|
| 1 | 15.3 | 7 | 32.4 | 13 | 4.8 |
| 2 | 5.3 | 8 | 22.3 | 14 | 38.1 |
| 3 | 30.1 | 9 | 5.1 | 15 | 17.2 |
| 4 | 1.9 | 10 | 17.9 | 16 | 16.2 |
| 5 | 46.3 | 11 | 4.3 | 17 | 25.3 |
| 6 | 14.8 | 12 | 7.6 | 18 | 13.1 |

One Foot GEMS

Compartment 51

318 Acres



Legend

- Sale / Payment Unit boundary (Red)
- Section Corners
- Recreational Trail
- Highway
- Paved Roads
- Gravel Roads
- Poor Dirt Roads
- Closed Roads
- Lakes and Rivers
- All
- Gate
- Berms

Locator Map
1:200,000

