



TIMBER SALE MAP

This information provided by authority of Part 525, 1994 PA 451, as amended.

Sale Number 32-012-25	Date 12/19/2024	
Scale 1:7,920	Page 1	Of 2

Forest Management Unit Gwinn Mgt Unit	County Marquette	Mapped By: Fischer
		Cruised By: Fischer, Rosten, Yeo

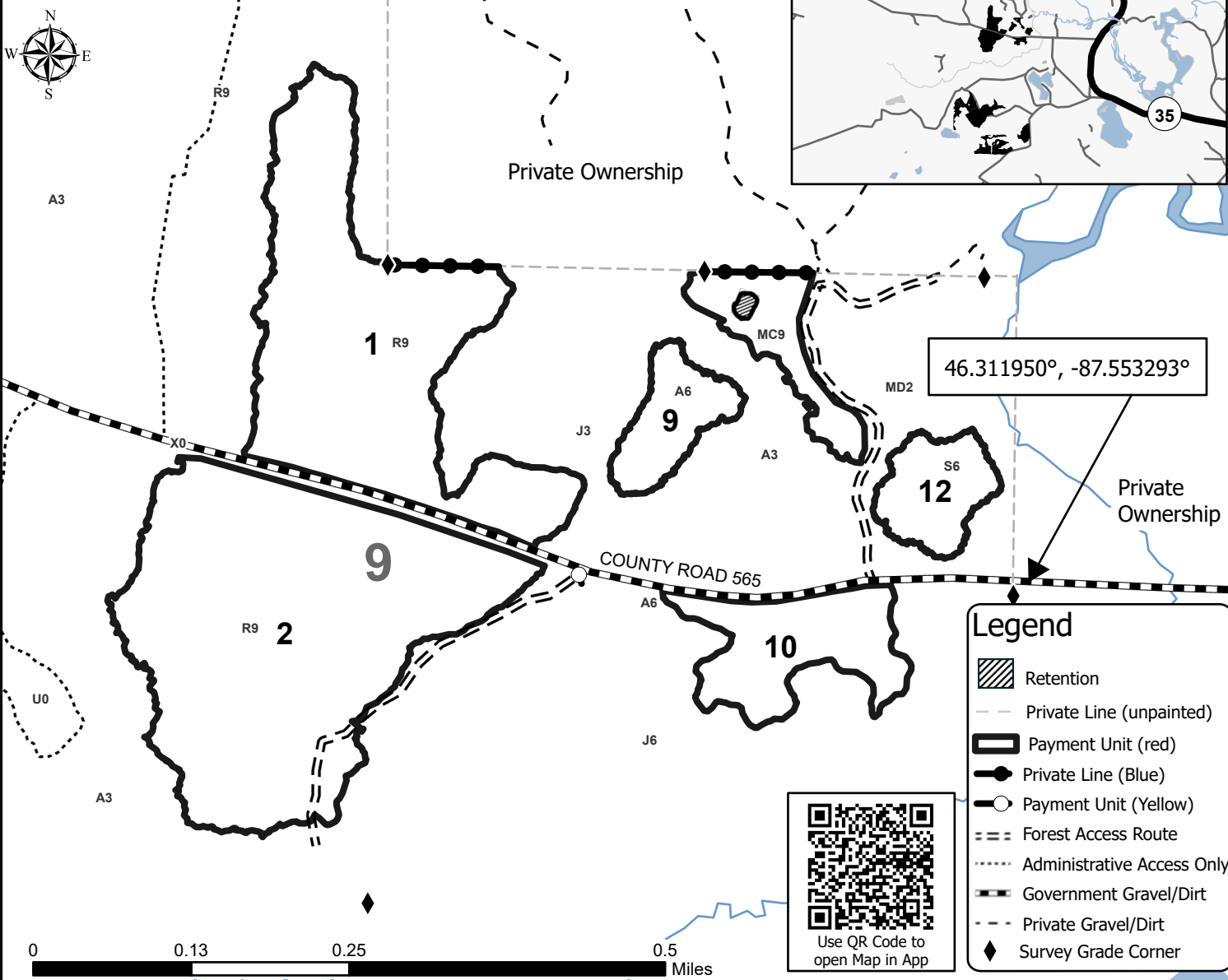
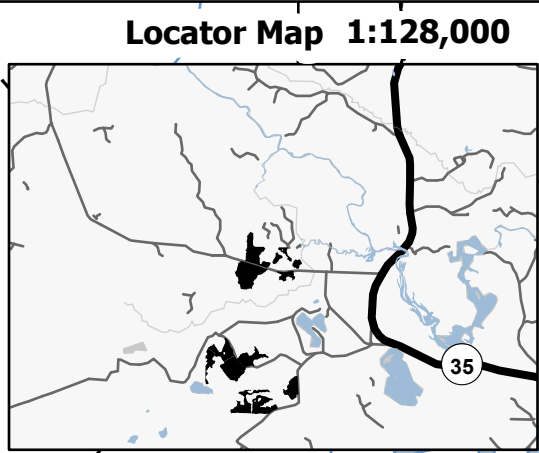
Township 45N	Range 26W	Section(s) and Subdivision(s) E1/2NW,S1/2NE,NESW,N1/2SE; Sec. 16 NWNW,S1/2NW,SWNE,N1/2SW,SESW; Sec. 16 SE; Sec. 21 NENW,NWNE; Sec. 9
------------------------	---------------------	--

Cover Type			
A = Aspen	J = Jack Pine	O = Oak	U = Upland Brush
B = Paper Birch	K = Rock	P = Lowland Poplar	UM = Upland Mix Forest
C = Cedar	L = Lowland Brush	Q = Mixed Swamp Conifer	V = Bog or Marsh
D = Treed Bog	LM = Lowland Mix Forest	R = Red Pine	W = White Pine
E = Swamp Hardwoods	M = Maple, Beech, Birch	S = Black Spruce	X = Non Stocked
F = Spruce/Fir	MC = Mixed Conifer	T = Tamarack	Y = Sand
G = Grass	MD = Mixed Deciduous		Z = Water
H = Hemlock	N = Marsh		

Density	
0 = Non Stocked	5 = Pole Timber Medium
1 = Seedling Sapling Poor	6 = Pole Timber Well
2 = Seedling Sapling Medium	7 = Saw Timber Poor
3 = Seedling Sapling Well	8 = Saw Timber Medium
4 = Pole Timber Poor	9 = Saw Timber Well

Payment Unit	Acres	Payment Unit	Acres	Payment Unit	Acres
1	26.9	6	21.1	11	18.1
2	36.8	7	10.9	12	4.3
3	17.6	8	15.5	13	4.5
4	27	9	4.1		
5	20	10	7.8		

565 Crooked Chains
214.6 Acres
Compartment 32033



46.311950°, -87.553293°

Legend	
	Retention
	Private Line (unpainted)
	Payment Unit (red)
	Private Line (Blue)
	Payment Unit (Yellow)
	Forest Access Route
	Administrative Access Only
	Government Gravel/Dirt
	Private Gravel/Dirt
	Survey Grade Corner

