

TIMBER SALE MAP

This information provided by authority of Part 525, 1994 PA 451, as amended.

Sale Number 32-010-24	Date 07/29/2024	
Scale 1:20,000	Page 1	Of 1

Forest Management Unit Gwinn Mgt Unit	County Marquette	Mapped By: Gould Cruised By: Gould, Siler
---	----------------------------	--

Township 45N	Range 28W	Section(s) and Subdivision(s) Sec. 22 N1/2NW,SWNW,NE,NWSE; Sec. 23 NW,SWNE,SW,NWSE;
------------------------	---------------------	---

Cover Type			
A = Aspen	J = Jack Pine	O = Oak	U = Upland Brush
B = Paper Birch	K = Rock	P = Lowland Poplar	UM = Upland Mix Forest
C = Cedar	L = Lowland Brush	Q = Mixed Swamp Conifer	V = Bog or Marsh
D = Treed Bog	LM = Lowland Mix Forest	R = Red Pine	W = White Pine
E = Swamp Hardwoods	M = Maple, Beech, Birch	S = Black Spruce	X = Non Stocked
F = Spruce/Fir	MC = Mixed Conifer	T = Tamarack	Y = Sand
G = Grass	MD = Mixed Deciduous	Z = Water	
H = Hemlock	N = Marsh		

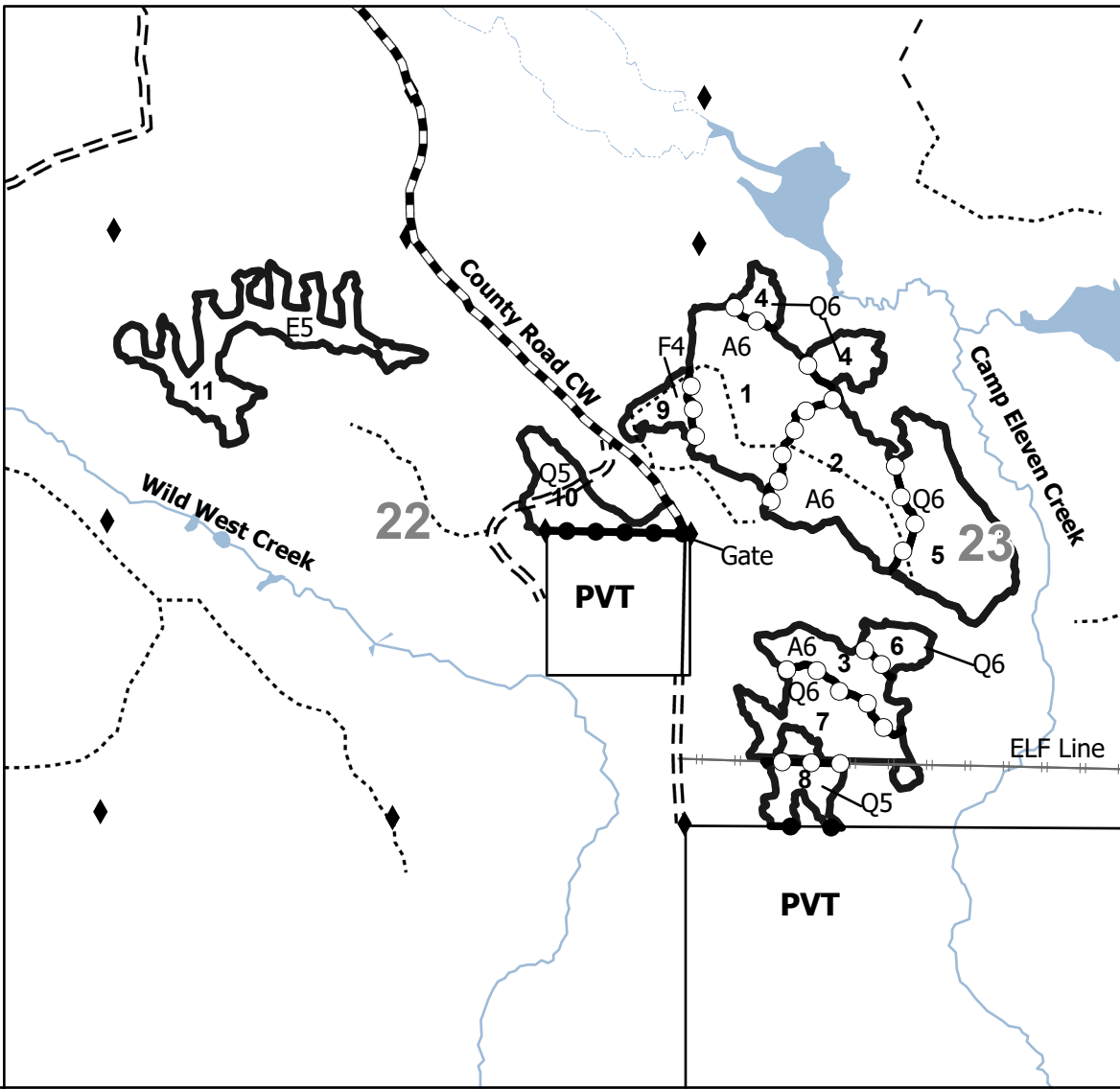
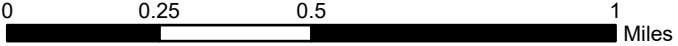
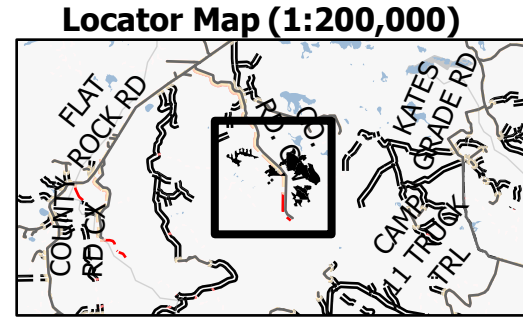
Density	
0 = Non Stocked	5 = Pole Timber Medium
1 = Seedling Sapling Poor	6 = Pole Timber Well
2 = Seedling Sapling Medium	7 = Saw Timber Poor
3 = Seedling Sapling Well	8 = Saw Timber Medium
4 = Pole Timber Poor	9 = Saw Timber Well

PU #	Acres	PU #	Acres	PU #	Acres
1	31.9	5	27.7	9	5.3
2	27.5	6	4.9	10	13
3	11	7	17.5	11	27.5
4	9.5	8	7.5		

Alder Dash

183.3 Acres

Compartment 32272



- Legend**
- Against State (Red)
 - Payment Unit (Yellow)
 - Private Line (Blue)
 - Primary Forest Road
 - - - Forest Access Route
 - Administrative Access Only
 - Paved Road
 - - - Government Gravel/Dirt
 - - - Private Gravel/Dirt
 - ◆ Survey Corners



Use QR Code to open Map in App

