



TIMBER SALE MAP

This information provided by authority of Part 525, 1994 PA 451, as amended.

Forest Management Unit		County	Mapped By	Date	Page of	
Gwinn Management Unit		Marquette	Brolin	09/12/2022	1	1
Township	Range	Section(s) and Subdivision(s)		Scale		
46N	24W	Section 23		1:15,840		

Cover Type				Density	
A = Aspen	H = Hemlock	N = Marsh	U = Upland Brush	0 = Non Stocked	5 = Pole Timber Medium
B = Paper Birch	J = Jack Pine	O = Oak	UM = Upland Mixed	1 = Seedling Sapling Poor	6 = Pole Timber Well
C = Cedar	L = Lowland Brush	P = Lowland Poplar	V = Bog or Marsh	2 = Seedling Sapling Medium	7 = Saw Timber Poor
D = Treed Bog	LM = Lowland Mixed	Q = Mixed Swamp Conifer	W = White Pine	3 = Seedling Sapling Well	8 = Saw Timber Medium
E = Swamp Hdwoods	M = Mpl, Bch, Brch	R = Red Pine	X = Non Stocked	4 = Pole Timber Poor	9 = Saw Timber Well
F = Spruce Fir	MC = Mixed Conifer	S = Black Spruce	Z = Water		
G = Grass	MD = Mixed Deciduous	T = Tamarack			

PU Acres

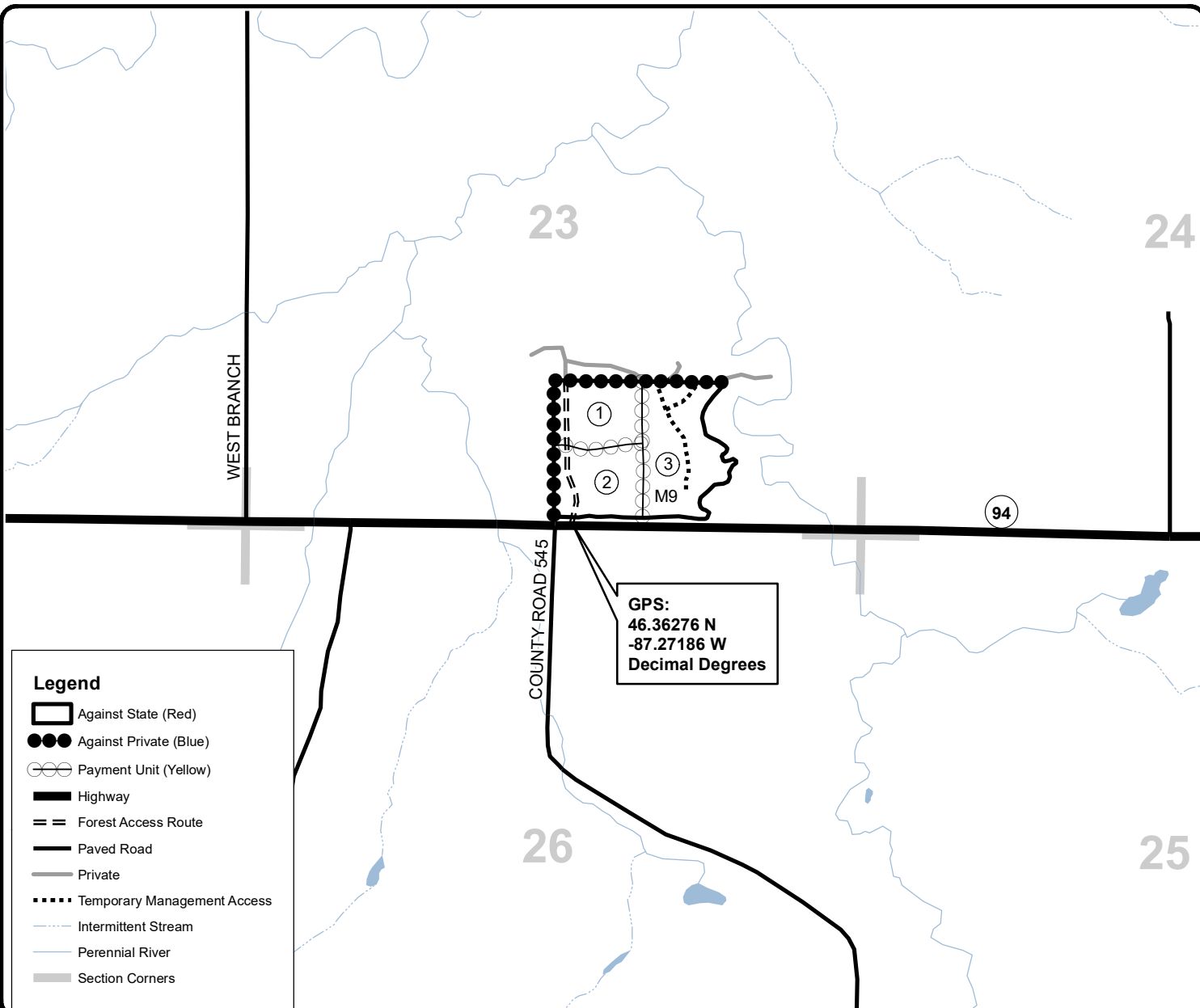
- 1 9.6
- 2 10.4
- 3 16.1

Bit of Hardwood

Compartment 281

36.1 Acres

QR code for PDF Maps app



Legend

- Against State (Red)
- Against Private (Blue)
- Payment Unit (Yellow)
- Highway
- Forest Access Route
- Paved Road
- Private
- Temporary Management Access
- Intermittent Stream
- Perennial River
- Section Corners

