



TIMBER SALE MAP

This information provided by authority of Part 525, 1994 PA 451, as amended.

Sale Number	Year
32 - 021 - 20	2020

Forest Management Unit Gwinn	County Marquette	Mapped By Jason Caron	Date 8 - 31 - 20	Page 1	of 2
Township 45N	Range 27W	Section(s) and Subdivision(s) Sections 8, 17, & 21	Scale 1:15,840		

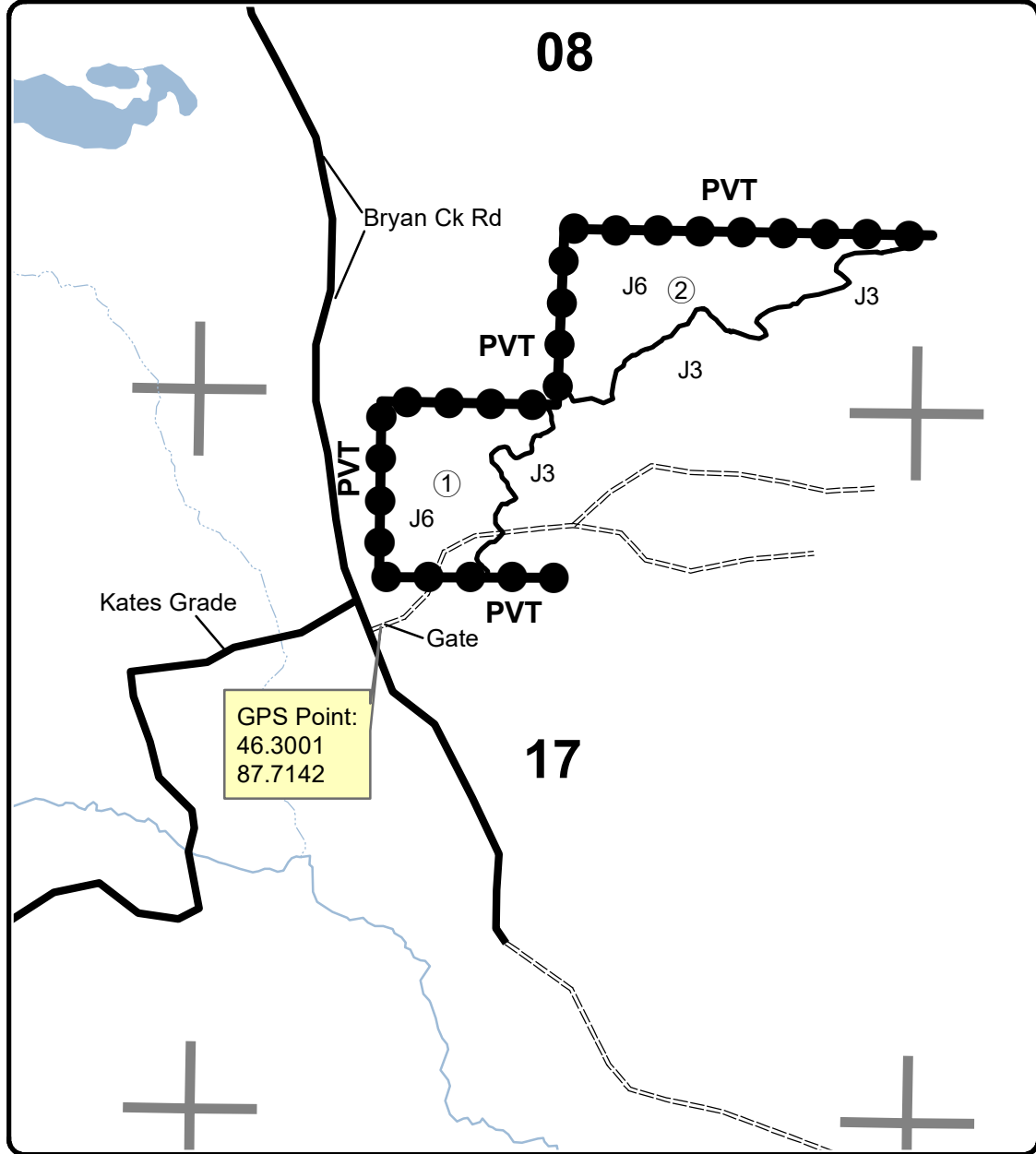
Cover Type				Density	
A = Aspen	H = Hemlock	N = Marsh	U = Upland Brush	0 = Non Stocked	5 = Pole Timber Medium
B = Paper Birch	J = Jack Pine	O = Oak	UM = Upland Mixed	1 = Seedling Sapling Poor	6 = Pole Timber Well
C = Cedar	L = Lowland Brush	P = Lowland Poplar	V = Bog or Marsh	2 = Seedling Sapling Medium	7 = Saw Timber Poor
D = Treed Bog	LM = Lowland Mixed	Q = Mixed Swamp Conifer	W = White Pine	3 = Seedling Sapling Well	8 = Saw Timber Medium
E = Swamp Hdwoods	M = Mpl, Bch, Brch	R = Red Pine	X = Non Stocked	4 = Pole Timber Poor	9 = Saw Timber Well
F = Spruce Fir	MC = Mixed Conifer	S = Black Spruce	Z = Water		
G = Grass	MD = Mixed Deciduous	T = Tamarack			

PU	Acres	PU	Acres
1	29	4	7.5
2	38.5		
3	4.9		

Blue Gill Brothers

Compartments 266 & 267

79.9 Acres



Legend

- County Road (thick solid line)
- Gravel Road (dashed line)
- Poor Dirt Road (dotted line)
- Against State (Red) (thick solid line)
- Private Line (Blue) (thick solid line with circles)
- Section Corners (grey cross)

QR Code for PDF Maps

