



TIMBER SALE MAP

This information provided by authority of Part 525, 1994 PA 451, as amended.

Forest Management Unit Gwinn		County Marquette	Mapped By Brolin	Date 03/30/2020	Page 1	of 1
Township 44N	Range 26W	Section(s) and Subdivision(s) Sections 27, 28, 29, 30, 32, and 33		Scale 1:31,680		

Cover Type				Density	
A = Aspen	H = Hemlock	N = Marsh	U = Upland Brush	0 = Non Stocked	5 = Pole Timber Medium
B = Paper Birch	J = Jack Pine	O = Oak	UM = Upland Mixed	1 = Seedling Sapling Poor	6 = Pole Timber Well
C = Cedar	L = Lowland Brush	P = Lowland Poplar	V = Bog or Marsh	2 = Seedling Sapling Medium	7 = Saw Timber Poor
D = Tread Bog	LM = Lowland Mixed	Q = Mixed Swamp Conifer	W = White Pine	3 = Seedling Sapling Well	8 = Saw Timber Medium
E = Swamp Hdwoods	M = Mpl, Bch, Brch	R = Red Pine	X = Non Stocked	4 = Pole Timber Poor	9 = Saw Timber Well
F = Spruce Fir	MC = Mixed Conifer	S = Black Spruce	Z = Water		
G = Grass	MD = Mixed Deciduous	T = Tamarack			

PU Acres	PU Acres	PU Acres
1 28.1	6 4.2	11 12.4
2 4.3	7 17.2	12 17.5
3 2.7	8 9.6	13 19.7
4 8.5	9 15.7	14 18
5 4.2	10 16.9	

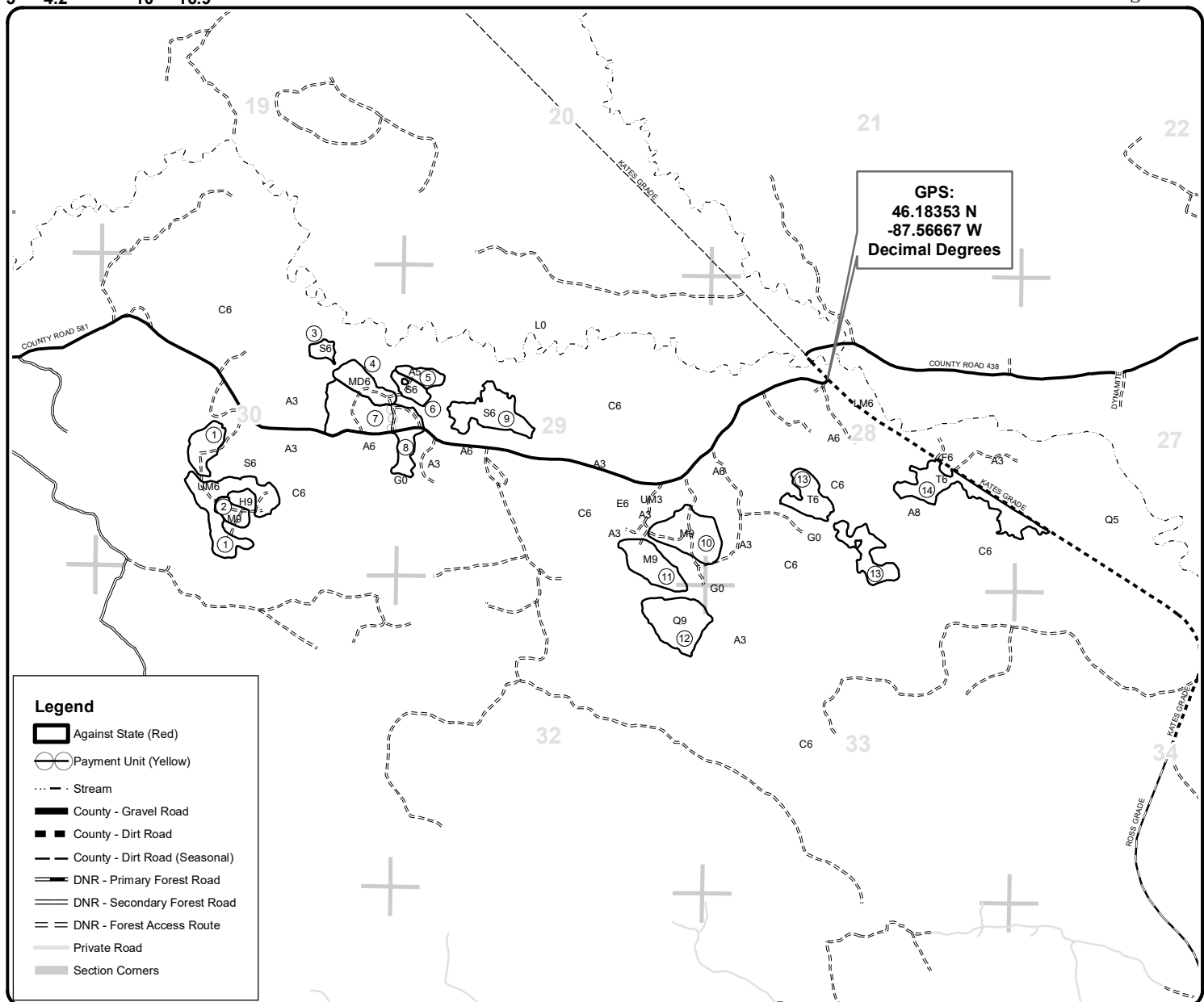
Bog Dogs

Compartments 58 and 59

179.0 Acres



QR code for PDF Map app



Legend

- Against State (Red)
- Payment Unit (Yellow)
- Stream
- County - Gravel Road
- County - Dirt Road
- County - Dirt Road (Seasonal)
- DNR - Primary Forest Road
- DNR - Secondary Forest Road
- DNR - Forest Access Route
- Private Road
- Section Corners

