



TIMBER SALE MAP

This information provided by authority of Part 525, 1994 PA 451, as amended.

Forest Management Unit Gwinn Management Unit		County Marquette	Mapped By Brolin	Date 05/15/2021	Page 1	of 1
Township 45N	Range 23W	Section(s) and Subdivision(s) Sections 19, 20, 28, 29, and 30		Scale 1:31,680		
Cover Type				Density		
A = Aspen	H = Hemlock	N = Marsh	U = Upland Brush	0 = Non Stocked	5 = Pole Timber Medium	
B = Paper Birch	J = Jack Pine	O = Oak	UM = Upland Mixed	1 = Seedling Sapling Poor	6 = Pole Timber Well	
C = Cedar	L = Lowland Brush	P = Lowland Poplar	V = Bog or Marsh	2 = Seedling Sapling Medium	7 = Saw Timber Poor	
D = Treed Bog	LM = Lowland Mixed	Q = Mixed Swamp Conifer	W = White Pine	3 = Seedling Sapling Well	8 = Saw Timber Medium	
E = Swamp Hdwoods	M = Mpl, Bch, Brch	R = Red Pine	X = Non Stocked	4 = Pole Timber Poor	9 = Saw Timber Well	
F = Spruce Fir	MC = Mixed Conifer	S = Black Spruce	Z = Water			
G = Grass	MD = Mixed Deciduous	T = Tamarack				

PU Acres	PU Acres	PU Acres
1 21.0	8 26.4	15 20.1
2 20.8	9 25.9	16 24.7
3 21.8	10 28.1	17 18.9
4 9.4	11 22.8	18 23.3
5 17.3	12 25.3	19 17.5
6 15.5	13 33.0	20 17.2
7 3.9	14 20.4	21 6.6

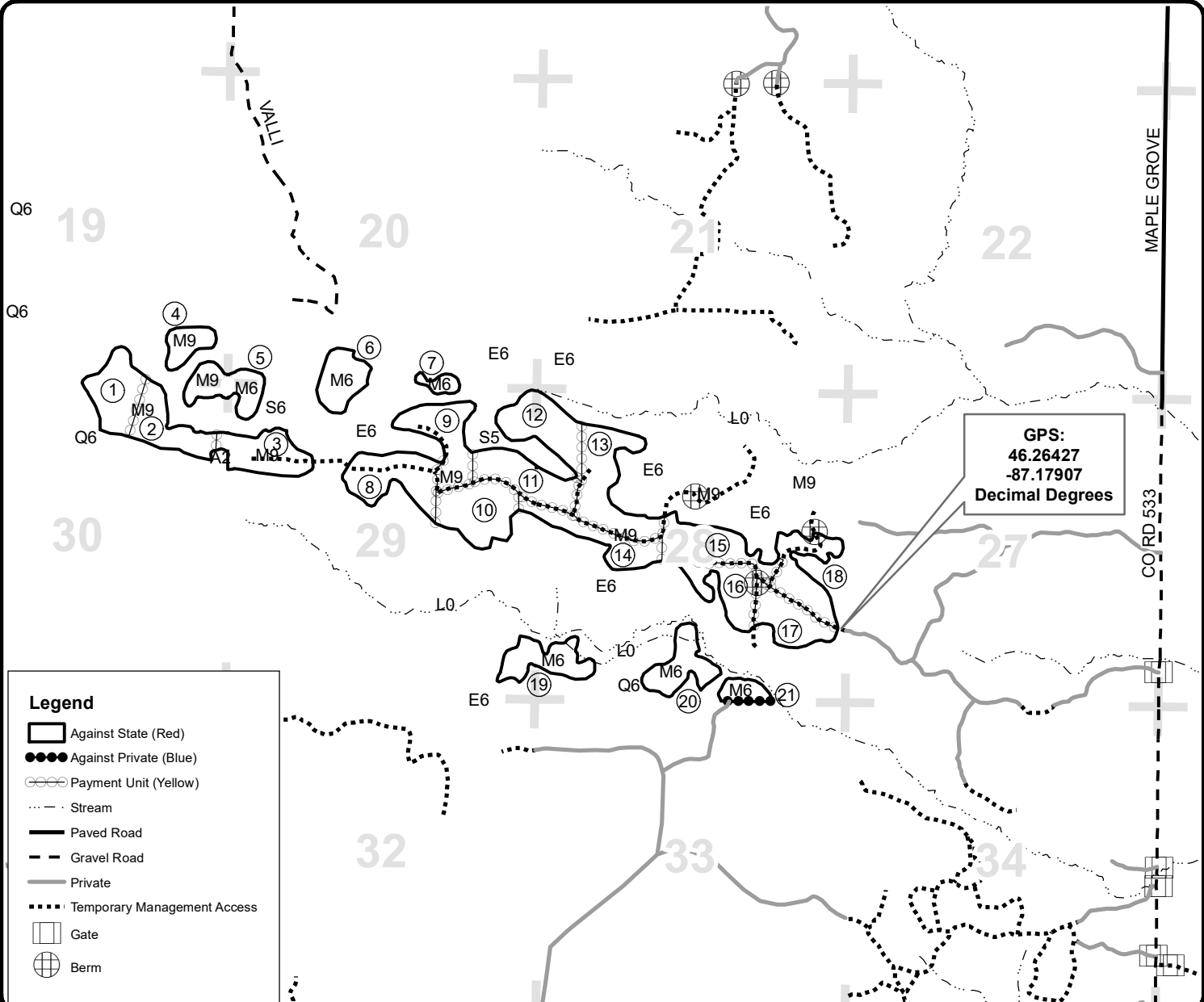
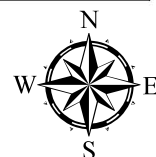
C3 Contract Marking HWD

Compartments 2, 3, 4

419.9 Acres



QR code for PDF Maps app



GPS:
 46.26427
 -87.17907
Decimal Degrees

Legend

- Against State (Red)
- Against Private (Blue)
- Payment Unit (Yellow)
- Stream
- Paved Road
- Gravel Road
- Private
- Temporary Management Access
- Gate
- Berm

