



# TIMBER SALE MAP

This information provided by authority of Part 525, 1994 PA 451, as amended.

Forest Management Unit Gwinn Management Unit		County Marquette	Mapped By Pete Holodnick	Date 01/12/21	Page 1	of 2
Township 44N	Range R26W	Section(s) and Subdivision(s) sections 29, 31, 32, and 33		Scale 1:15,840		

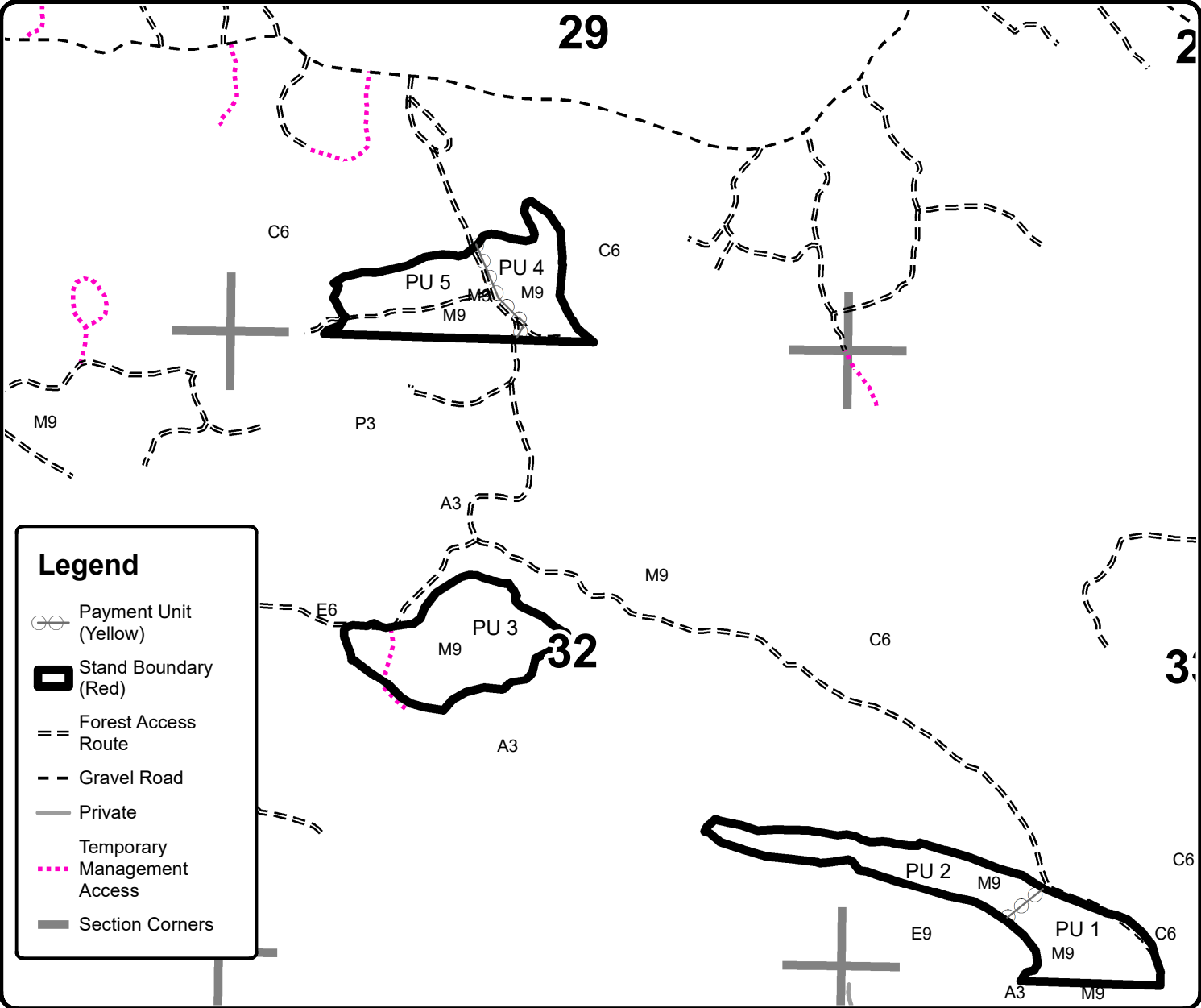
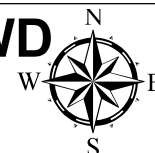
Cover Type				Density	
A = Aspen	H = Hemlock	N = Marsh	U = Upland Brush	0 = Non Stocked	5 = Pole Timber Medium
B = Paper Birch	J = Jack Pine	O = Oak	UM = Upland Mixed	1 = Seedling Sapling Poor	6 = Pole Timber Well
C = Cedar	L = Lowland Brush	P = Lowland Poplar	V = Bog or Marsh	2 = Seedling Sapling Medium	7 = Saw Timber Poor
D = Treed Bog	LM = Lowland Mixed	Q = Mixed Swamp Conifer	W = White Pine	3 = Seedling Sapling Well	8 = Saw Timber Medium
E = Swamp Hdwoods	M = Mpl, Bch, Brch	R = Red Pine	X = Non Stocked	4 = Pole Timber Poor	9 = Saw Timber Well
F = Spruce Fir	MC = Mixed Conifer	S = Black Spruce	Z = Water		
G = Grass	MD = Mixed Deciduous	T = Tamarack			

PU	Acres	PU	Acres	PU	Acres
1.	13.2	4.	13.1	7.	10.7
2.	13.2	5.	20.5	8.	10.1
3.	28.2	6.	30	9.	9.2

## C58/59 Contract Marking HWD

### Compartment 59

### 148.2 Acres



**Legend**

- Payment Unit (Yellow)
- Stand Boundary (Red)
- Forest Access Route
- Gravel Road
- Private
- Temporary Management Access
- Section Corners

