



TIMBER SALE MAP

This information provided by authority of Part 525, 1994 PA 451, as amended.

Forest Management Unit Gwinn		County Marquette	Mapped By Brolin	Date 09/10/2019	Page 1	of 1
Township 43N, 44N	Range 25W	Section(s) and Subdivision(s) Sections 28, 29, 30 in T44N, and Section 5 in T43N		Scale 1:31,680		

Cover Type				Density			
A = Aspen	H = Hemlock	N = Marsh	U = Upland Brush	0 = Non Stocked	5 = Pole Timber Medium		
B = Paper Birch	J = Jack Pine	O = Oak	UM = Upland Mixed	1 = Seedling Sapling Poor	6 = Pole Timber Well		
C = Cedar	L = Lowland Birch	P = Lowland Poplar	V = Bog or Marsh	2 = Seedling Sapling Medium	7 = Saw Timber Poor		
D = Tread Bog	LM = Lowland Mixed	Q = Mixed Swamp Conifer	W = White Pine	3 = Seedling Sapling Well	8 = Saw Timber Medium		
E = Swamp Hdwoods	M = Mpl, Bch, Brch	R = Red Pine	X = Non Stocked	4 = Pole Timber Poor	9 = Saw Timber Well		
F = Spruce Fir	MC = Mixed Conifer	S = Black Spruce	Z = Water				
G = Grass	MD = Mixed Deciduous	T = Tamarack					

PU Acres	PU Acres	PU Acres	PU Acres	PU Acres	PU Acres
1 56.6	7 7.0	13 3.3	19 2.9	25 1.0	
2 5.4	8 13.1	14 12.6	20 1.0	26 3.1	
3 23.5	9 13.1	15 10.0	21 3.1	27 5.5	
4 20.1	10 13.7	16 16.6	22 5.5	28 12.3	
5 28.2	11 13.5	17 4.6	23 12.3	29 14.1	
6 33.6	12 9.8	18 24.1	24 14.1		

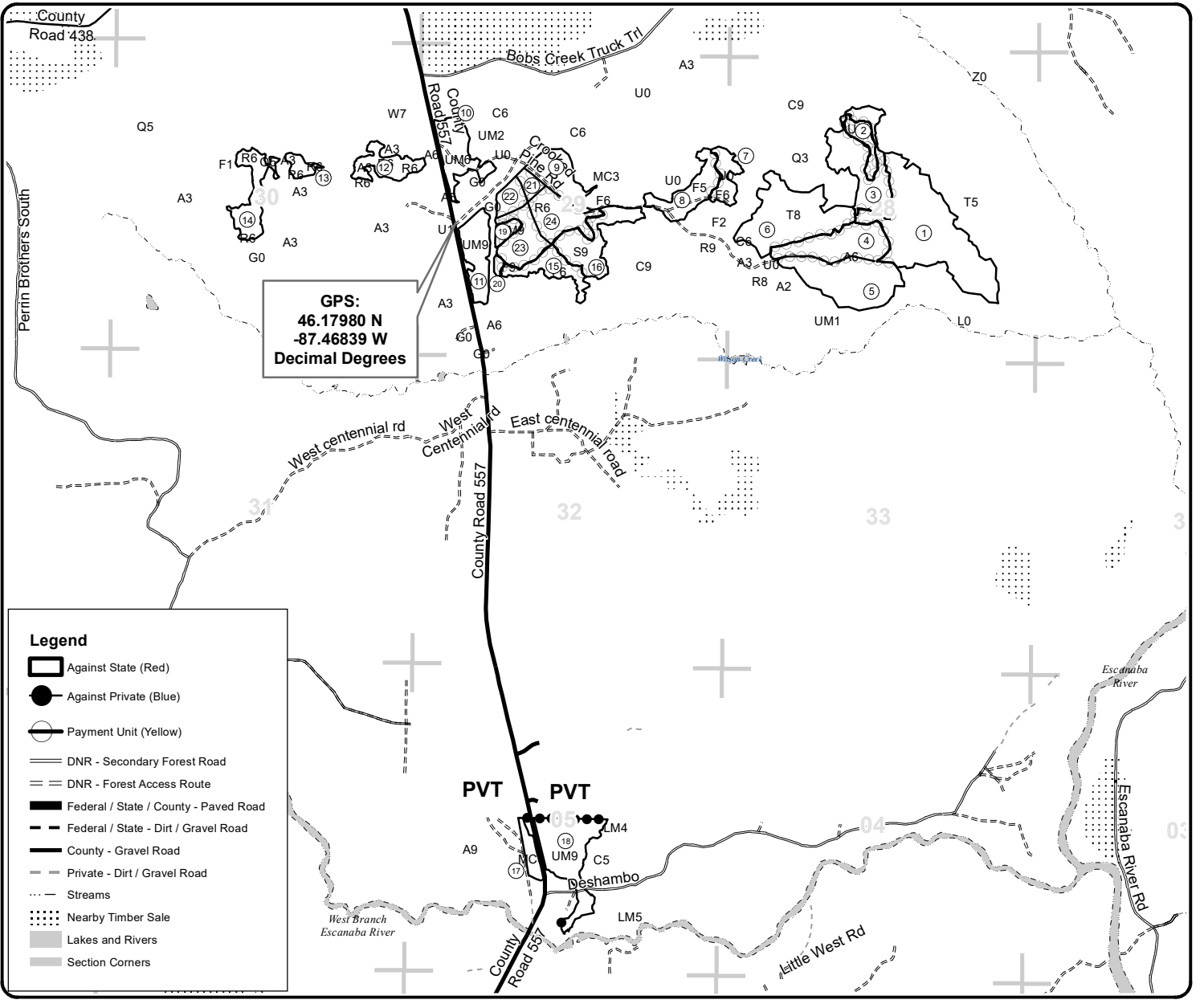
Camp Out and Stay Awhile

Compartments 45, 51, and 65

347.7 Acres



QR code for PDF Map app



Legend

- Against State (Red)
- Against Private (Blue)
- Payment Unit (Yellow)
- DNR - Secondary Forest Road
- DNR - Forest Access Route
- Federal / State / County - Paved Road
- Federal / State - Dirt / Gravel Road
- County - Gravel Road
- Private - Dirt / Gravel Road
- Streams
- Nearby Timber Sale
- Lakes and Rivers
- Section Corners

