



TIMBER SALE MAP

This information provided by authority of Part 525, 1994 PA 451, as amended.

Forest Management Unit Gwinn		County Marquette	Mapped By Brolin	Date 08/03/2020	Page 1	of 1
Township 45N	Range 26, 27W	Section(s) and Subdivision(s) Sections 18, 19, 20, 29, 30 (26W) and 24 (27W)		Scale 1:31,680		

Cover Type				Density	
A = Aspen	H = Hemlock	N = Marsh	U = Upland Brush	0 = Non Stocked	5 = Pole Timber Medium
B = Paper Birch	J = Jack Pine	O = Oak	UM = Upland Mixed	1 = Seedling Sapling Poor	6 = Pole Timber Well
C = Cedar	L = Lowland Brush	P = Lowland Poplar	V = Bog or Marsh	2 = Seedling Sapling Medium	7 = Saw Timber Poor
D = Tread Bog	LM = Lowland Mixed	Q = Mixed Swamp Conifer	W = White Pine	3 = Seedling Sapling Well	8 = Saw Timber Medium
E = Swamp Hdwoods	M = Mpl, Bch, Brch	R = Red Pine	X = Non Stocked	4 = Pole Timber Poor	9 = Saw Timber Well
F = Spruce Fir	MC = Mixed Conifer	S = Black Spruce	Z = Water		
G = Grass	MD = Mixed Deciduous	T = Tamarack			

PU Acres	PU Acres	PU Acres
1 23.4	8 2.7	15 24.3
2 25.1	9 4.5	16 6.0
3 6.9	10 16.1	17 21.4
4 21.8	11 9.1	18 22.8
5 21.9	12 9.1	19 32.8
6 28.4	13 26.3	20 9.7
7 2.5	14 4.8	

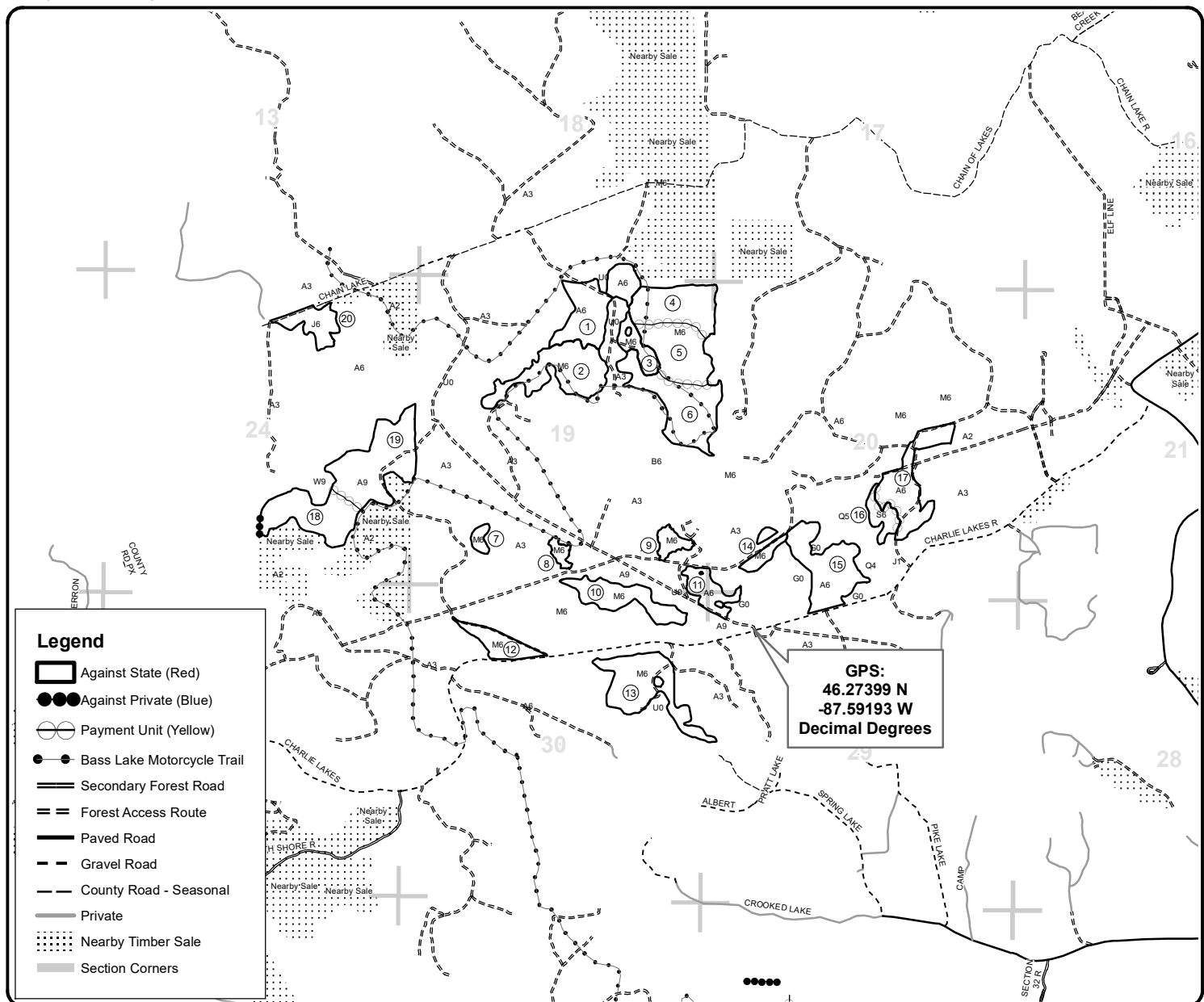
Charlie and the Chain Trail

Compartments 36, 37, 261

319.6 Acres



QR code for PDF Map app



Legend

- Against State (Red)
- Against Private (Blue)
- Payment Unit (Yellow)
- Bass Lake Motorcycle Trail
- Secondary Forest Road
- Forest Access Route
- Paved Road
- Gravel Road
- County Road - Seasonal
- Private
- Nearby Timber Sale
- Section Corners

GPS:
 46.27399 N
 -87.59193 W
 Decimal Degrees

