



TIMBER SALE MAP

This information provided by authority of Part 525, 1994 PA 451, as amended.

Sale Number 32-001-26	Date 05/06/2025	
Scale 1:15,840	Page 1	Of 3

Forest Management Unit Gwinn Mgt Unit	County Marquette	Mapped By: Fischer
		Cruised By: N/A

Township 44N / 45N	Range 23W	Section(s) and Subdivision(s) Sec. 2 NW,NE; Sec. 3 N1/2NW,SEW,W1/2NE,NESW,SWSE; Sec. 34 S1/2SW; Sec. 1 NWNW; Sec. 11 NW,NE,N1/2SW,SESW,SE; Sec. 14 SENW,NESW; Sec. 16 NENE,S1/2NE;
------------------------------	---------------------	--

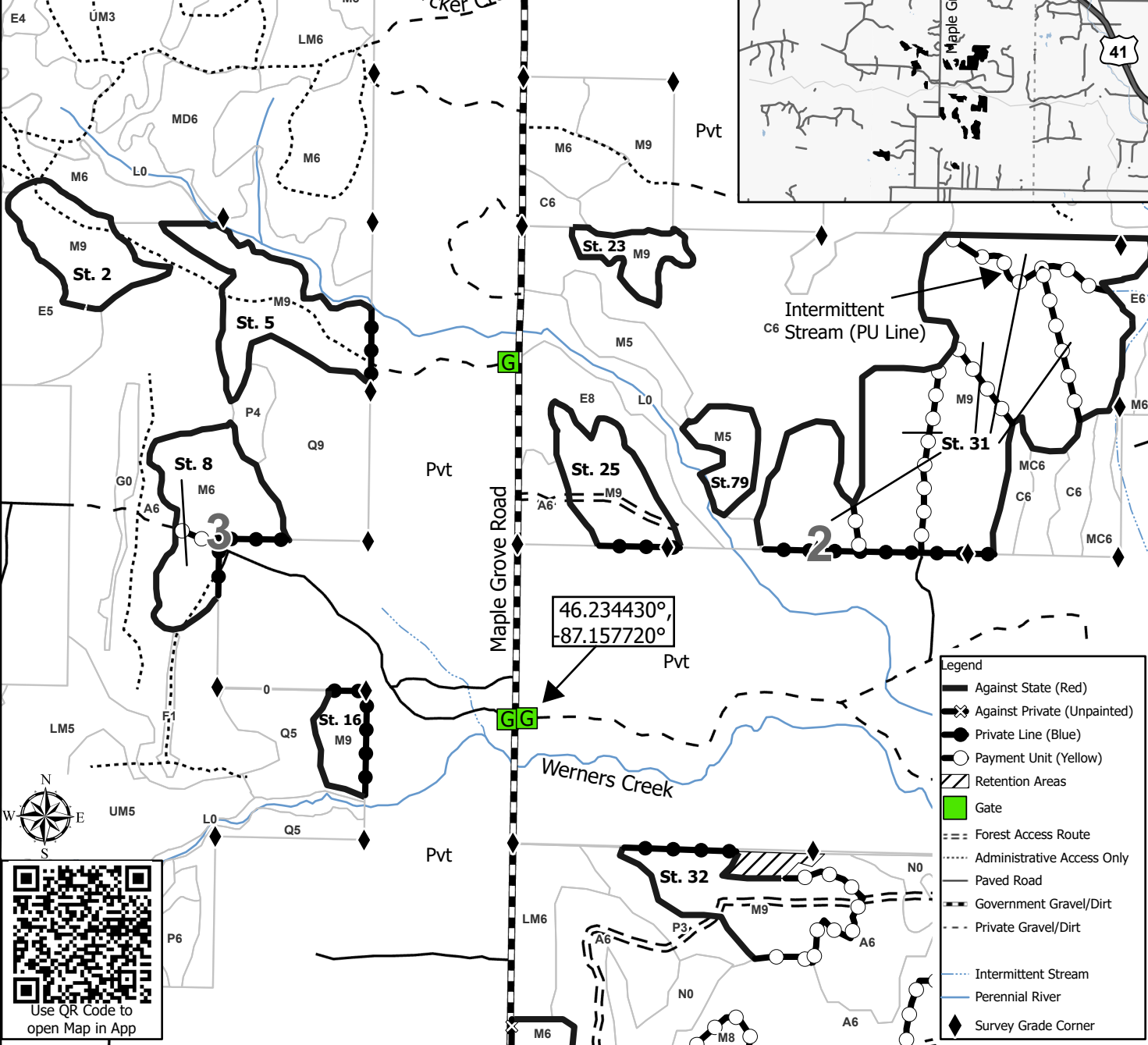
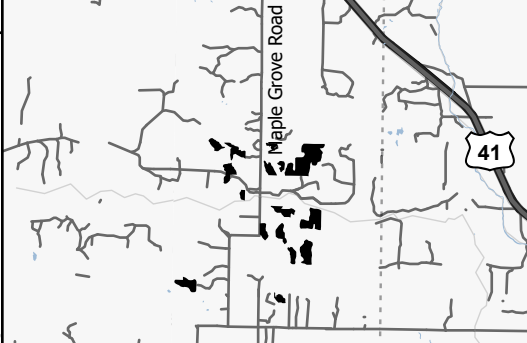
Cover Type

A = Aspen	J = Jack Pine	O = Oak	U = Upland Brush
B = Paper Birch	K = Rock	P = Lowland Poplar	UM = Upland Mix Forest
C = Cedar	L = Lowland Brush	Q = Mixed Swamp Conifer	V = Bog or Marsh
D = Treed Bog	LM = Lowland Mix Forest	R = Red Pine	W = White Pine
E = Swamp Hardwoods	M = Maple, Beech, Birch	S = Black Spruce	X = Non Stocked
F = Spruce/Fir	MC = Mixed Conifer	T = Tamarack	Y = Sand
G = Grass	MD = Mixed Deciduous	Z = Water	
H = Hemlock	N = Marsh		

Density

0 = Non Stocked	5 = Pole Timber Medium
1 = Seedling Sapling Poor	6 = Pole Timber Well
2 = Seedling Sapling Medium	7 = Saw Timber Poor
3 = Seedling Sapling Well	8 = Saw Timber Medium
4 = Pole Timber Poor	9 = Saw Timber Well

Locator Map 1:200,000



46.234430°
-87.157720°



Use QR Code to open Map in App

Legend

- Against State (Red)
- Against Private (Unpainted)
- Private Line (Blue)
- Payment Unit (Yellow)
- Retention Areas
- Gate
- Forest Access Route
- Administrative Access Only
- Paved Road
- Government Gravel/Dirt
- Private Gravel/Dirt
- Intermittent Stream
- Perennial River
- Survey Grade Corner