



TIMBER SALE MAP

This information provided by authority of Part 525, 1994 PA 451, as amended.

Forest Management Unit Gwinn		County Marquette	Mapped By Brolin	Date 09/23/2019	Page 1	of 1
Township 45N	Range 27W	Section(s) and Subdivision(s) Sections 28, 33, and 34		Scale 1:15,840		

Cover Type				Density			
A = Aspen	H = Hemlock	N = Marsh	U = Upland Brush	0 = Non Stocked	5 = Pole Timber Medium		
B = Paper Birch	J = Jack Pine	O = Oak	UM = Upland Mixed	1 = Seedling Sapling Poor	6 = Pole Timber Well		
C = Cedar	L = Lowland Brush	P = Lowland Poplar	V = Bog or Marsh	2 = Seedling Sapling Medium	7 = Saw Timber Poor		
D = Tread Bog	LM = Lowland Mixed	Q = Mixed Swamp Conifer	W = White Pine	3 = Seedling Sapling Well	8 = Saw Timber Medium		
E = Swamp Hdwoods	M = Mpl, Bch, Brch	R = Red Pine	X = Non Stocked	4 = Pole Timber Poor	9 = Saw Timber Well		
F = Spruce Fir	MC = Mixed Conifer	S = Black Spruce	Z = Water				
G = Grass	MD = Mixed Deciduous	T = Tamarack					

PU Acres	PU Acres	PU Acres	PU Acres	PU Acres	PU Acres
1 16.4	6 7.4	11 7.9			
2 24.2	7 20.0	12 4.2			
3 15.7	8 4.5				
4 20.4	9 6.5				
5 16.4	10 11.8				

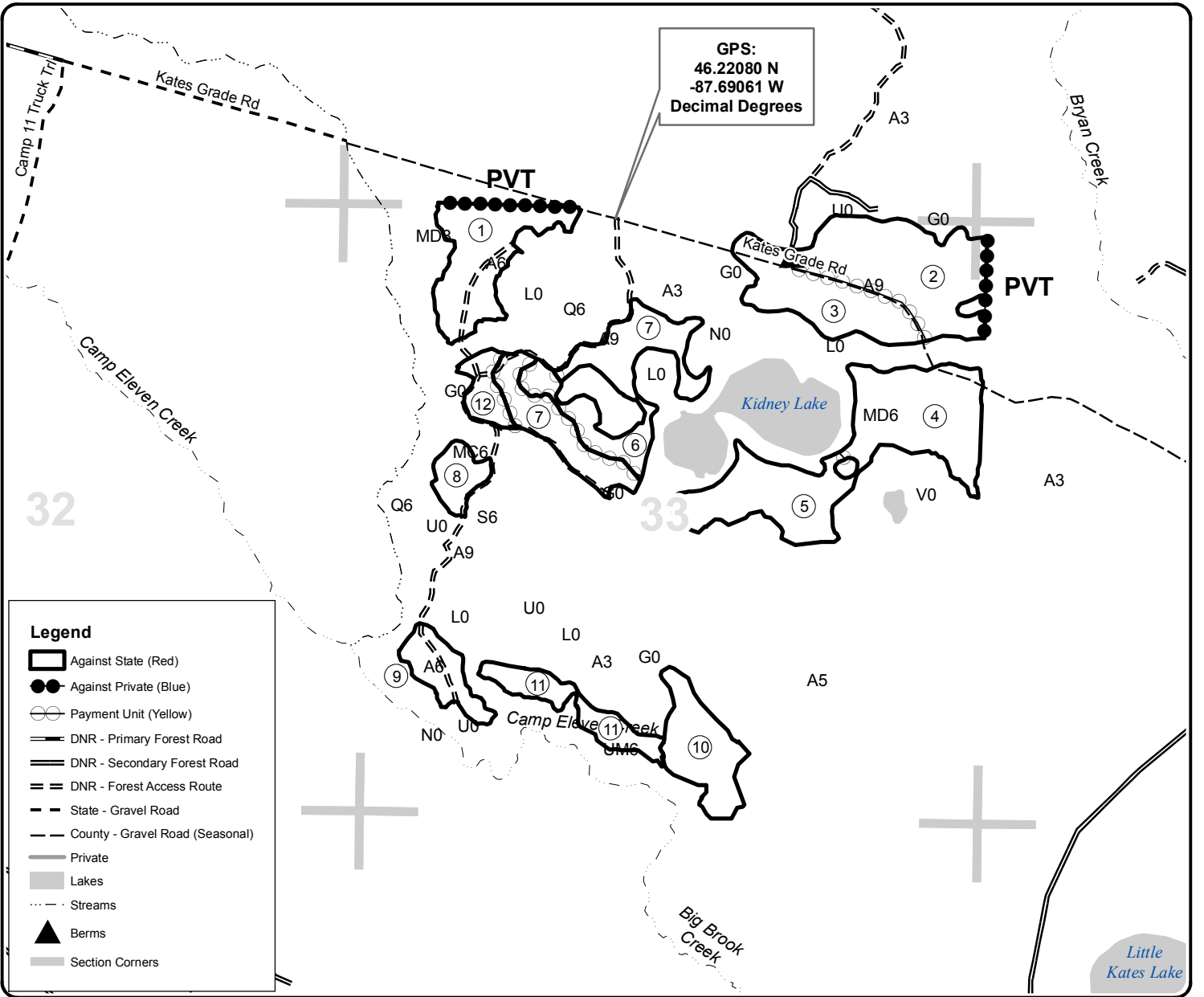
Kates Kidney Compartment 264 155.4 Acres



QR code for PDF Map app



GPS:
46.22080 N
-87.69061 W
Decimal Degrees



Legend

- Against State (Red)
- Against Private (Blue)
- Payment Unit (Yellow)
- DNR - Primary Forest Road
- DNR - Secondary Forest Road
- DNR - Forest Access Route
- State - Gravel Road
- County - Gravel Road (Seasonal)
- Private
- Lakes
- Streams
- Berms
- Section Corners

