



TIMBER SALE MAP

This information provided by authority of Part 525, 1994 PA 451, as amended.

Forest Management Unit Gwinn		County Alger	Mapped By Pete Holodnick	Date 09/08/21	Page 1	of 1
Township 45N	Range 21W	Section(s) and Subdivision(s) Sections 11, 13, 14, and 15		Scale 1:15,840		

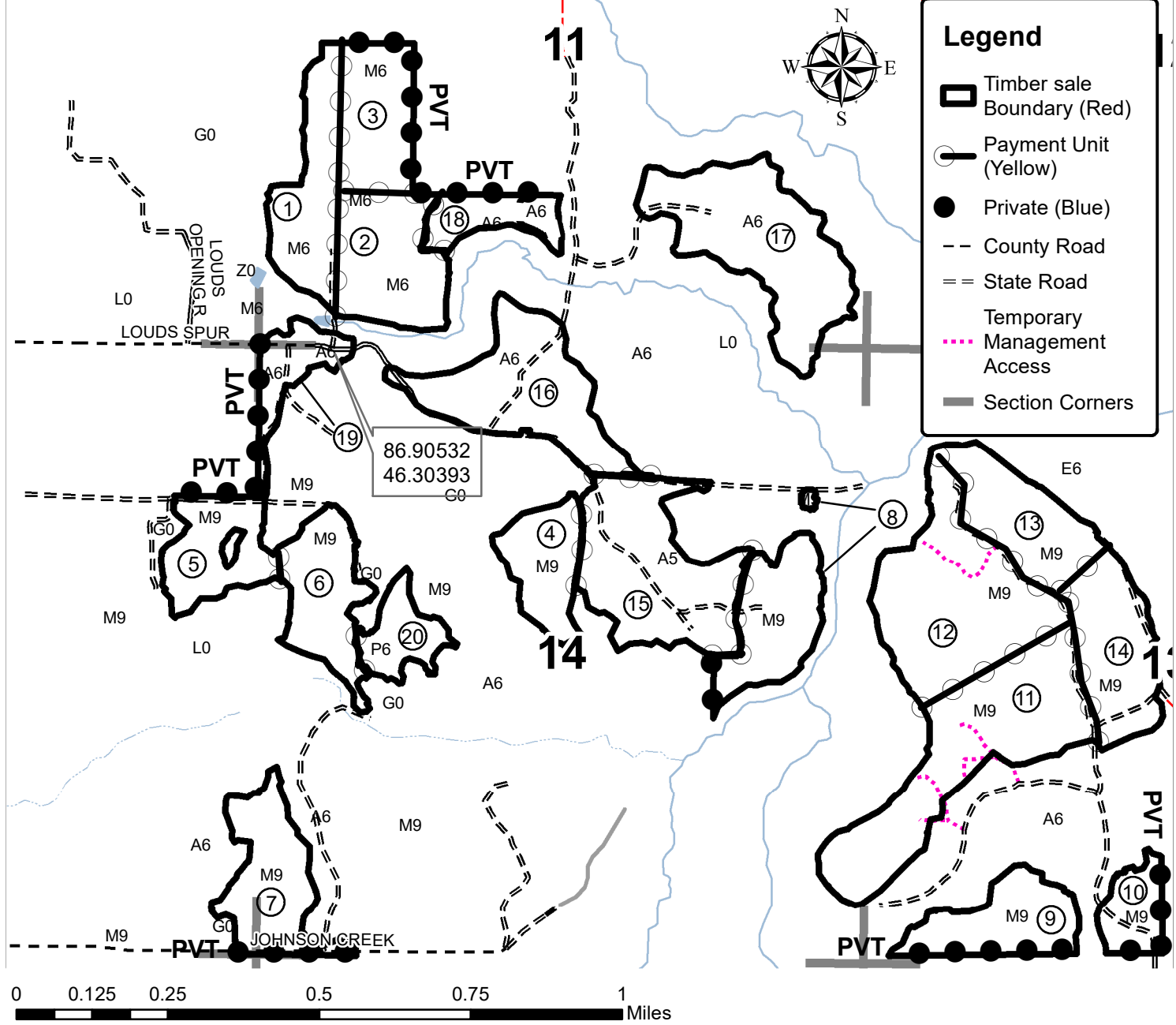
Cover Type				Density	
A = Aspen	H = Hemlock	N = Marsh	U = Upland Brush	0 = Non Stocked	5 = Pole Timber Medium
B = Paper Birch	J = Jack Pine	O = Oak	UM = Upland Mixed	1 = Seedling Sapling Poor	6 = Pole Timber Well
C = Cedar	L = Lowland Brush	P = Lowland Poplar	V = Bog or Marsh	2 = Seedling Sapling Medium	7 = Saw Timber Poor
D = Treed Bog	LM = Lowland Mixed	Q = Mixed Swamp Conifer	W = White Pine	3 = Seedling Sapling Well	8 = Saw Timber Medium
E = Swamp Hdwoods	M = Mpl, Bch, Brch	R = Red Pine	X = Non Stocked	4 = Pole Timber Poor	9 = Saw Timber Well
F = Spruce Fir	MC = Mixed Conifer	S = Black Spruce	Z = Water		
G = Grass	MD = Mixed Deciduous	T = Tamarack			

PU	Acres	PU	Acres	PU	Acres	PU	Acres	PU	Acres
1)	17.9	5)	16.1	9)	17.7	13)	22.1	17)	37.9
2)	20.8	6)	19.2	10)	8.8	14)	24.2	18)	9.5
3)	24.4	7)	21.5	11)	40.9	15)	36	19)	9.7
4)	14.5	8)	20.1	12)	41.7	16)	30.8	20)	9.3

Loud Creaky Maple

Compartment 98

443.1 Acres



Legend

- Timber sale Boundary (Red)
- Payment Unit (Yellow)
- Private (Blue)
- County Road (Dashed)
- State Road (Double Dashed)
- Temporary Management Access (Dotted Pink)
- Section Corners (Grey)