



Sale Number	Year
32-013	21

# TIMBER SALE MAP

This information provided by authority of Part 525, 1994 PA 451, as amended.

Forest Management Unit	County	Mapped By	Date	Page	of
Gwinn Management Unit	Marquette	Brolin	08/30/2021	1	1
Township	Range	Section(s) and Subdivision(s)	Scale		
44, 45N	23W	Sections 2, 3 (44N-23W) / Sections 34, 35, 36 (45N-23W)	1:15,840		

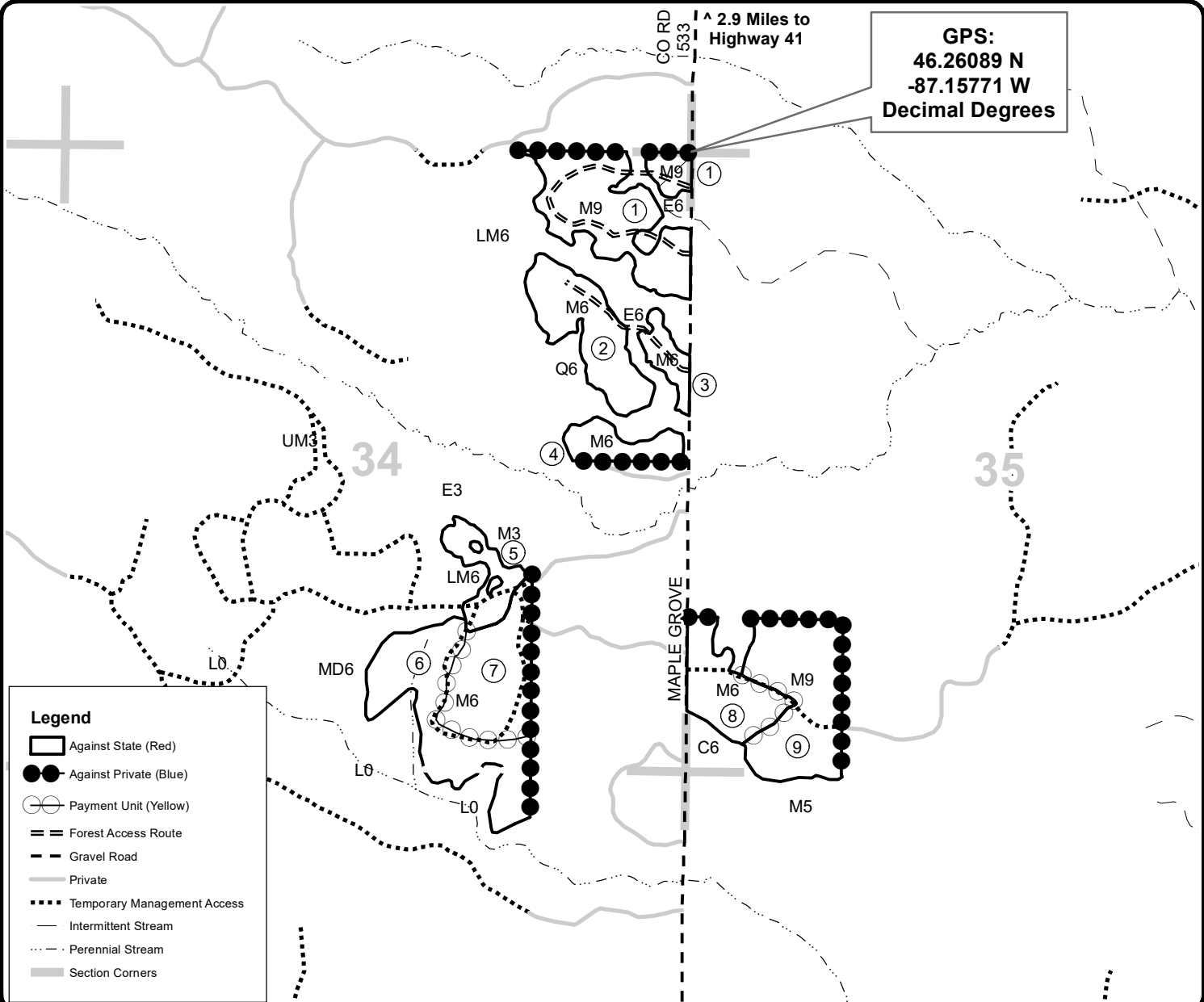
Cover Type				Density	
A = Aspen	H = Hemlock	N = Marsh	U = Upland Brush	0 = Non Stocked	5 = Pole Timber Medium
B = Paper Birch	J = Jack Pine	O = Oak	UM = Upland Mixed	1 = Seedling Sapling Poor	6 = Pole Timber Well
C = Cedar	L = Lowland Brush	P = Lowland Poplar	V = Bog or Marsh	2 = Seedling Sapling Medium	7 = Saw Timber Poor
D = Treed Bog	LM = Lowland Mixed	Q = Mixed Swamp Conifer	W = White Pine	3 = Seedling Sapling Well	8 = Saw Timber Medium
E = Swamp Hdwoods	M = Mpl, Bch, Brch	R = Red Pine	X = Non Stocked	4 = Pole Timber Poor	9 = Saw Timber Well
F = Spruce Fir	MC = Mixed Conifer	S = Black Spruce	Z = Water		
G = Grass	MD = Mixed Deciduous	T = Tamarack			

PU Acres	PU Acres
1 23.7	6 21.9
2 14.9	7 16.5
3 4.0	8 11.5
4 5.9	9 22.3
5 6.4	

## Maple Grove Maple Compartment 1 127.1 Acres



QR code for PDF Maps app



**Legend**

- Against State (Red)
- Against Private (Blue)
- Payment Unit (Yellow)
- Forest Access Route
- Gravel Road
- Private
- Temporary Management Access
- Intermittent Stream
- Perennial Stream
- Section Corners

