



TIMBER SALE MAP

This information provided by authority of Part 525, 1994 PA 451, as amended.

Forest Management Unit Gwinn FMU		County Marquette	Mapped By Hill	Date 10/1/18	Page 1	of 1
Township 45N	Range 28W	Section(s) and Subdivision(s) Sections 25, and 36		Scale 1:15,840		

Cover Type

A = Aspen	H = Hemlock	N = Marsh	U = Upland Brush
B = Paper Birch	J = Jack Pine	O = Oak	UM = Upland Mixed
C = Cedar	L = Lowland Brush	P = Lowland Poplar	V = Bog or Marsh
D = Treed Bog	LM = Lowland Mixed	Q = Mixed Swamp Conifer	W = White Pine
E = Swamp Hdwoods	M = Mpl, Bch, Brch	R = Red Pine	X = Non Stocked
F = Spruce Fir	MC = Mixed Conifer	S = Black Spruce	Z = Water
G = Grass	MD = Mixed Deciduous	T = Tamarack	

Density

0 = Non Stocked	5 = Pole Timber Medium
1 = Seedling Sapling Poor	6 = Pole Timber Well
2 = Seedling Sapling Medium	7 = Saw Timber Poor
3 = Seedling Sapling Well	8 = Saw Timber Medium
4 = Pole Timber Poor	9 = Saw Timber Well

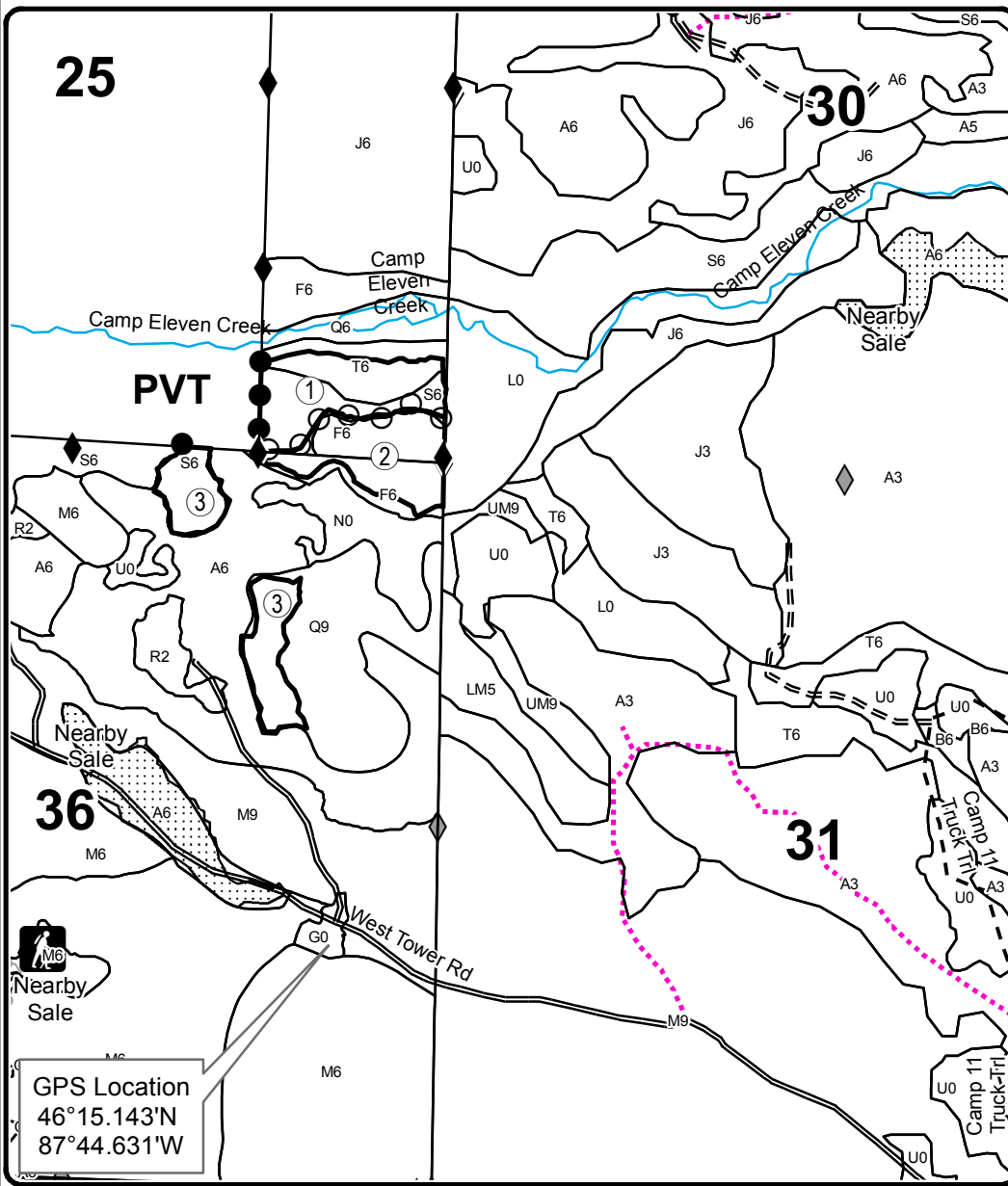
PU Acres

1	14.4
2	12.8
3	12.1



CF Lowlands

Compartment 270
39.3 Acres

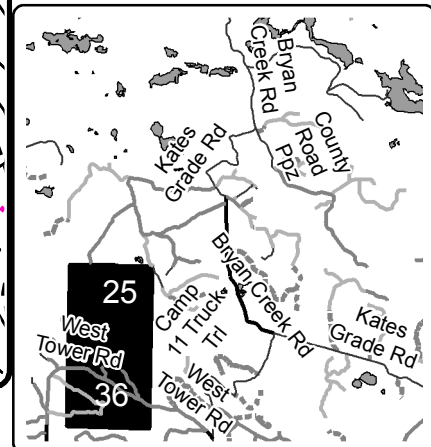


Legend

- Stand Boundaries
- Survey Corners
- Field Grade Corners
- Secondary Forest Road
- Forest Access Route
- Gravel Road
- Temporary Management Access
- Perennial River
- Against State (Red)
- Payment Unit (Yellow)
- Private Line (Blue)
- Nearby Timber Sales

QR code for PDF maps

Locator Map 1:150,000



GPS Location
46°15.143'N
87°44.631'W

