



TIMBER SALE MAP

This information provided by authority of Part 525, 1994 PA 451, as amended.

Forest Management Unit Gwinn FMU		County Marquette and Dickinson	Mapped By Rick Hill	Date 10/2/18	Page 1	of 1
Township 44N, 45N	Range 28W	Section(s) and Subdivision(s) 44N-28W S2, S3 45N-28W S35, S36		Scale 1:15,840		

Cover Type

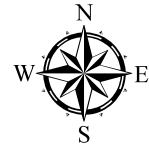
A = Aspen	H = Hemlock	N = Marsh	U = Upland Brush
B = Paper Birch	J = Jack Pine	O = Oak	UM = Upland Mixed
C = Cedar	L = Lowland Brush	P = Lowland Poplar	V = Bog or Marsh
D = Treed Bog	LM = Lowland Mixed	Q = Mixed Swamp Conifer	W = White Pine
E = Swamp Hdwoods	M = Mpl, Bch, Brch	R = Red Pine	X = Non Stocked
F = Spruce Fir	MC = Mixed Conifer	S = Black Spruce	Z = Water
G = Grass	MD = Mixed Deciduous	T = Tamarack	

Density

0 = Non Stocked	5 = Pole Timber Medium
1 = Seedling Sapling Poor	6 = Pole Timber Well
2 = Seedling Sapling Medium	7 = Saw Timber Poor
3 = Seedling Sapling Well	8 = Saw Timber Medium
4 = Pole Timber Poor	9 = Saw Timber Well

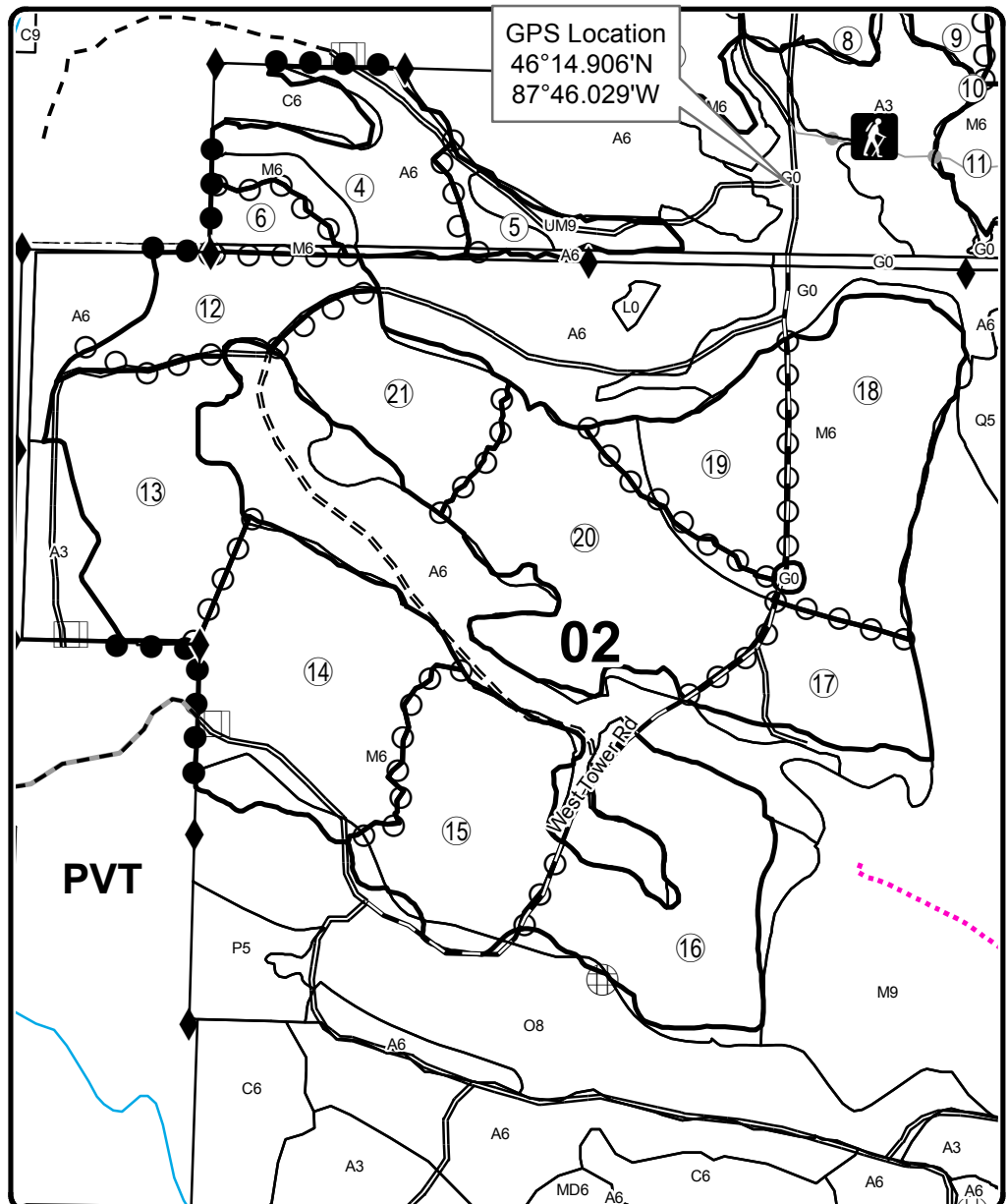
CF Squared Hardwood

Compartment 12019, 32270
654.8 Acres



PU	Acres	PU	Acres
1	13.4	12	22.8
2	09.8	13	44.8
3	11.3	14	62.0
4	31.1	15	45.2
5	11.9	16	49.7
6	08.3	17	25.4
7	29.1	18	50.0
8	22.4	19	27.5
9	38.1	20	61.4
10	32.5	21	30.8
11	27.3		

GPS Location
46°14.906'N
87°46.029'W



Legend

- Stand Boundaries
- Survey Corners
- Primary Forest Road
- Secondary Forest Road
- Forest Access Route
- Gravel Road
- Private
- Temporary Management Access
- Perennial River
- Against State (Red)
- Payment Unit (Yellow)
- Private Line (Blue)

QR Code for PDF maps

