



TIMBER SALE MAP

This information provided by authority of Part 525, 1994 PA 451, as amended.

Sale Number	Year
32 - 011	2021

Forest Management Unit	County	Mapped By	Date	Page	of
Gwinn	Marquette	Caron	9/15/21	1	1
Township	Range	Section(s) and Subdivision(s)	Scale		
44N	25W	Sections 29 & 32	1:15,840		

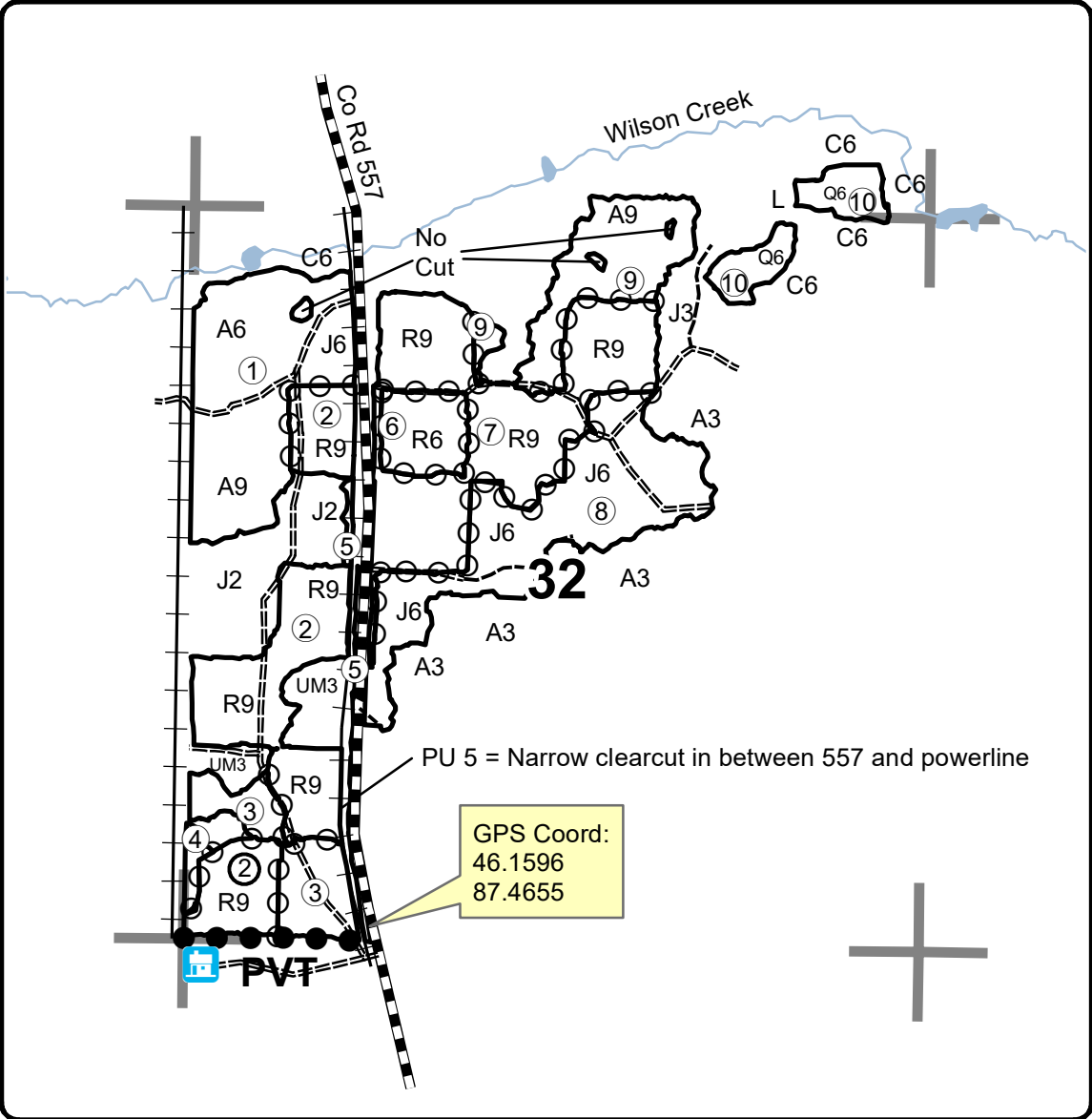
Cover Type				Density	
A = Aspen	H = Hemlock	N = Marsh	U = Upland Brush	0 = Non Stocked	5 = Pole Timber Medium
B = Paper Birch	J = Jack Pine	O = Oak	UM = Upland Mixed	1 = Seedling Sapling Poor	6 = Pole Timber Well
C = Cedar	L = Lowland Brush	P = Lowland Poplar	V = Bog or Marsh	2 = Seedling Sapling Medium	7 = Saw Timber Poor
D = Treed Bog	LM = Lowland Mixed	Q = Mixed Swamp Conifer	W = White Pine	3 = Seedling Sapling Well	8 = Saw Timber Medium
E = Swamp Hdwoods	M = Mpl, Bch, Brch	R = Red Pine	X = Non Stocked	4 = Pole Timber Poor	9 = Saw Timber Well
F = Spruce Fir	MC = Mixed Conifer	S = Black Spruce	Z = Water		
G = Grass	MD = Mixed Deciduous	T = Tamarack			

PU	Acres	PU	Acres
1	37.2	6	8.5
2	41.3	7	46.8
3	13.1	8	37.9
4	1.5	9	18.9
5	2.9	10	9

Polly Wog Pine

Compartment 46

217.1 Acres



Legend

- +— Power Line
- - - Over Grown Road
- == Poor Dirt Road
- ▬ County Road
- Against State (Red)
- ○ Payment Unit (Yellow)
- ● Private Line (Blue)
- Section Corners

QR Code for Avenza Map

