



TIMBER SALE MAP

This information provided by authority of Part 525, 1994 PA 451, as amended.

Forest Management Unit Gwinn		County Alger	Mapped By Brolin	Date 08/14/2018	Page 1	of 1
Township 44N	Range 21W	Section(s) and Subdivision(s) Section 1, Section 12, Section 13, and Section 24		Scale 1:31,680		

Cover Type				Density	
A = Aspen	H = Hemlock	N = Marsh	U = Upland Brush	0 = Non Stocked	5 = Pole Timber Medium
B = Paper Birch	J = Jack Pine	O = Oak	UM = Upland Mixed	1 = Seedling Sapling Poor	6 = Pole Timber Well
C = Cedar	L = Lowland Brush	P = Lowland Poplar	V = Bog or Marsh	2 = Seedling Sapling Medium	7 = Saw Timber Poor
D = Tread Bog	LM = Lowland Mixed	Q = Mixed Swamp Conifer	W = White Pine	3 = Seedling Sapling Well	8 = Saw Timber Medium
E = Swamp Hdwoods	M = Mpl, Bch, Brch	R = Red Pine	X = Non Stocked	4 = Pole Timber Poor	9 = Saw Timber Well
F = Spruce Fir	MC = Mixed Conifer	S = Black Spruce	Z = Water		
G = Grass	MD = Mixed Deciduous	T = Tamarack			

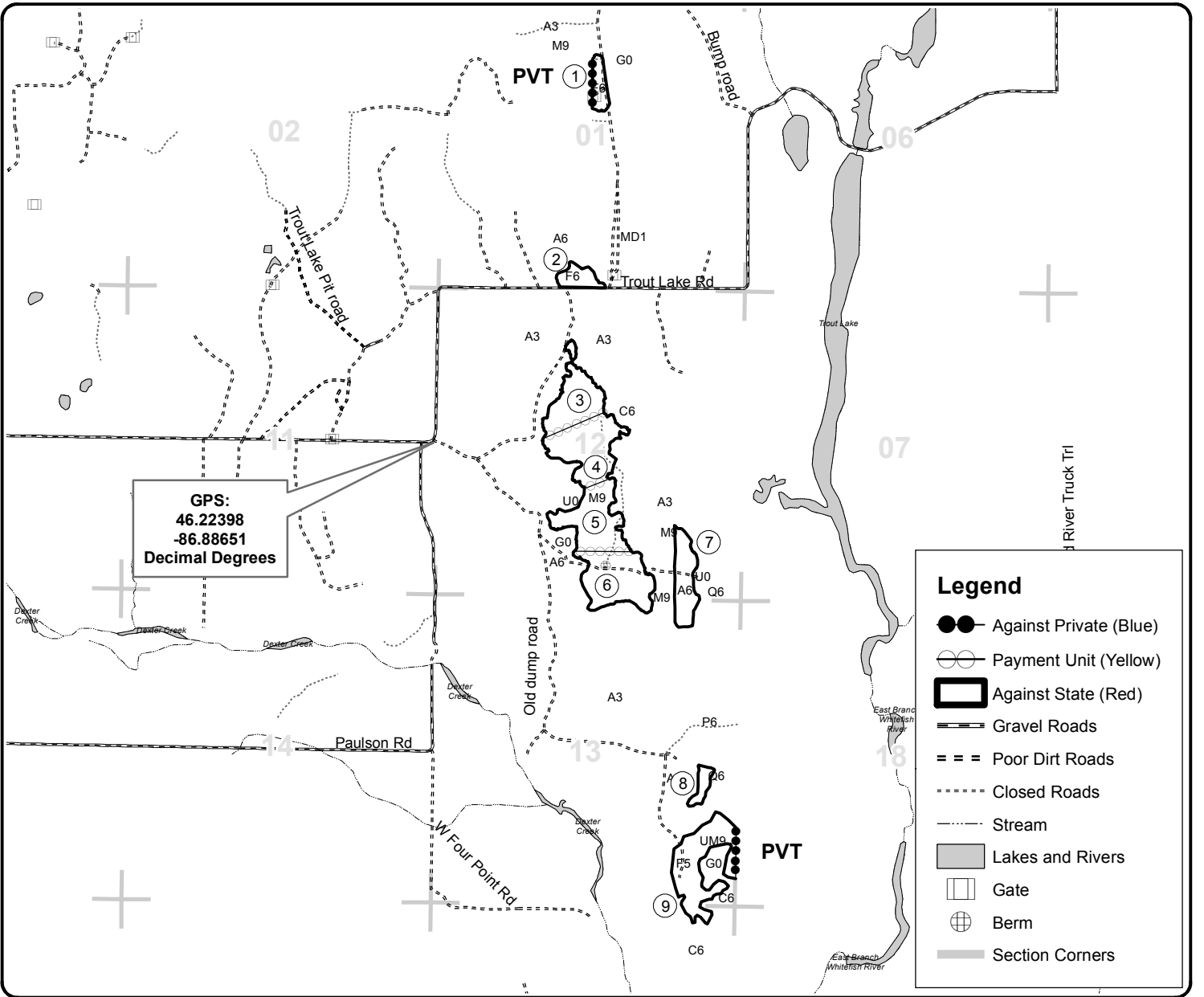
PU Acres	PU Acres
1 5.0	6 23.5
2 5.2	7 12.4
3 18.0	8 3.2
4 22.3	9 24.6
5 21.9	

Rodgers MVP

Compartment 96

136.1 Acres

QR code for PDF Map app



GPS:
46.22398
-86.88651
Decimal Degrees

Legend

- Against Private (Blue)
- Payment Unit (Yellow)
- ▭ Against State (Red)
- Gravel Roads
- - - Poor Dirt Roads
- Closed Roads
- Stream
- ▭ Lakes and Rivers
- Gate
- ⊕ Berm
- Section Corners

