



TIMBER SALE MAP

This information provided by authority of Part 525, 1994 PA 451, as amended.

| | | | | | | |
|-------------------------------------|--------------|---|------------------------|--------------------|-----------|---------|
| Forest Management Unit Gwinn FMU | | County Marquette | Mapped By Rick Hill | Date 07/28/2017 | Page 1 | of 1 |
| Township 46N | Range 28W | Section(s) and Subdivision(s) Section 35 | | Scale 1:15,840 | | |

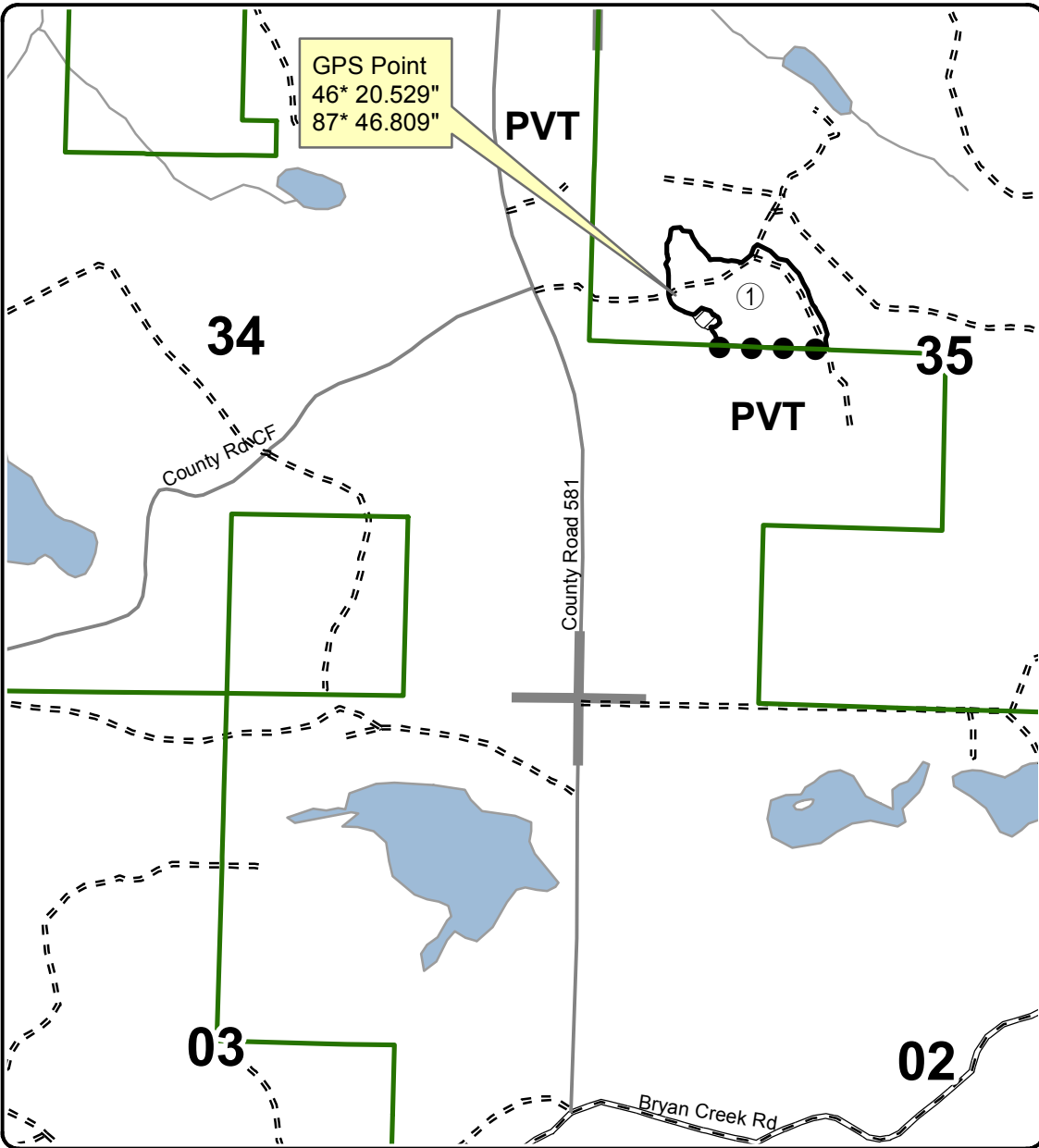
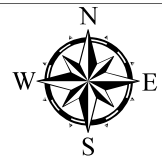
| Cover Type | | | | Density | |
|-------------------|----------------------|-------------------------|-------------------|-----------------------------|------------------------|
| A = Aspen | H = Hemlock | N = Marsh | U = Upland Brush | 0 = Non Stocked | 5 = Pole Timber Medium |
| B = Paper Birch | J = Jack Pine | O = Oak | UM = Upland Mixed | 1 = Seedling Sapling Poor | 6 = Pole Timber Well |
| C = Cedar | L = Lowland Brush | P = Lowland Poplar | V = Bog or Marsh | 2 = Seedling Sapling Medium | 7 = Saw Timber Poor |
| D = Treed Bog | LM = Lowland Mixed | Q = Mixed Swamp Conifer | W = White Pine | 3 = Seedling Sapling Well | 8 = Saw Timber Medium |
| E = Swamp Hdwoods | M = Mpl, Bch, Brch | R = Red Pine | X = Non Stocked | 4 = Pole Timber Poor | 9 = Saw Timber Well |
| F = Spruce Fir | MC = Mixed Conifer | S = Black Spruce | Z = Water | | |
| G = Grass | MD = Mixed Deciduous | T = Tamarack | | | |

| | |
|-----------|--------------|
| PU | Acres |
| 1 | 15.2 |

Thermopoylae Jack Pine

Compartment 300

15.2 Acres



Legend

- Against State (Red)
- Private Line (Blue)
- Retention Area
- Section Corners
- State Forests
- Paved Roads
- Gravel Roads
- Poor Dirt Roads

Locator Map
1:200,000

