

**TIMBER SALE MAP**

This information provided by authority of Part 525, 1994 PA 451, as amended.

Sale Number

32-003-25

Date

05/01/2025

Forest Management Unit

Gwinn Mgt Unit

County

Marquette

Mapped By: Siler

Cruised By: Siler & Gould

Scale

1:10,000

Page

1

Of

1

Township

50N

Range

28W

Section(s) and

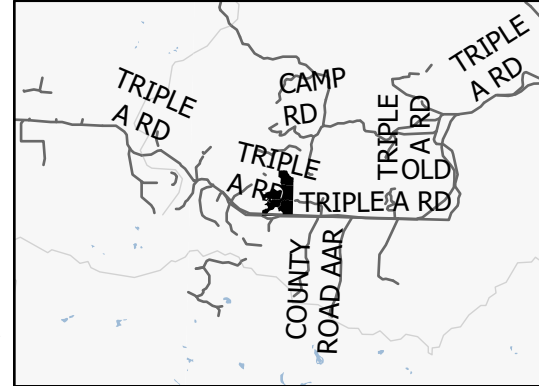
Subdivision(s) Sec. 7 SENW,SW;

Cover Type

| | | | |
|---------------------|-------------------------|-------------------------|------------------------|
| A = Aspen | J = Jack Pine | O = Oak | U = Upland Brush |
| B = Paper Birch | K = Rock | P = Lowland Poplar | UM = Upland Mix Forest |
| C = Cedar | L = Lowland Brush | Q = Mixed Swamp Conifer | V = Bog or Marsh |
| D = Treed Bog | LM = Lowland Mix Forest | R = Red Pine | W = White Pine |
| E = Swamp Hardwoods | M = Maple, Beech, Birch | S = Black Spruce | X = Non Stocked |
| F = Spruce/Fir | MC = Mixed Conifer | T = Tamarack | Y = Sand |
| G = Grass | MD = Mixed Deciduous | Z = Water | |
| H = Hemlock | N = Marsh | | |

Density

| | |
|-----------------------------|------------------------|
| 0 = Non Stocked | 5 = Pole Timber Medium |
| 1 = Seedling Sapling Poor | 6 = Pole Timber Well |
| 2 = Seedling Sapling Medium | 7 = Saw Timber Poor |
| 3 = Seedling Sapling Well | 8 = Saw Timber Medium |
| 4 = Pole Timber Poor | 9 = Saw Timber Well |

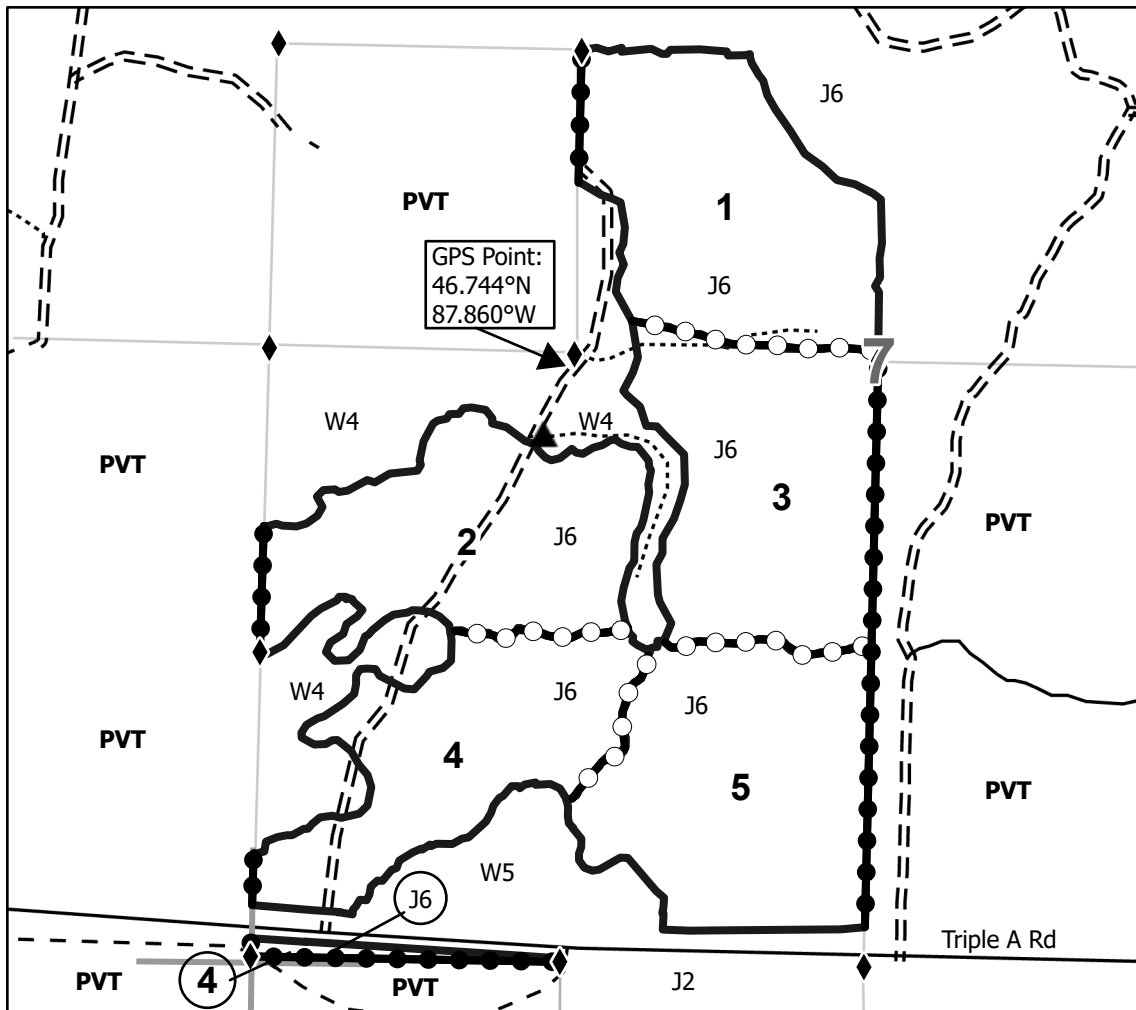
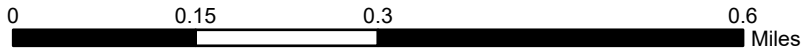
Locator Map 1:200,000

| Payment Unit Number | Acres |
|---------------------|-------|
| 1 | 29.4 |
| 2 | 27.2 |
| 3 | 28.4 |
| 4 | 25.7 |
| 5 | 30.8 |

Triple Eh Pine

141.4 Acres

Compartment 205

**Legend**

- Against State (Red)
- Private Line (Blue)
- Payment Unit (Yellow)
- Forest Access Route
- Administrative Access Only
- Paved Road
- Private Gravel/Dirt
- State Boundary
- Survey Grade Corner
- Berm
- Section Corner

