



# TIMBER SALE MAP

This information provided by authority of Part 525, 1994 PA 451, as amended.

Forest Management Unit <b>Gaylord Management Unit</b>		County <b>Cheboygan</b>	Mapped By <b>John Scheele</b>	Date <b>09/24/2021</b>	Page <b>1</b>	of <b>1</b>
Township <b>35N</b>	Range <b>02W</b>	Section(s) and Subdivision(s) <b>Section 20 NENW Section 21 N1/2SE, SWSE,NENW,S1/2NW,E1/2NE,E1/2SW Section 22 NWSW</b>		Scale <b>1:15,840</b>		
Cruised By <b>John Scheele</b>						

### Cover Type

A = Aspen	H = Hemlock	N = Marsh	U = Upland Brush
B = Paper Birch	J = Jack Pine	O = Oak	UM = Upland Mixed
C = Cedar	L = Lowland Brush	P = Lowland Poplar	V = Bog or Marsh
D = Treed Bog	LM = Lowland Mixed	Q = Mixed Swamp Conifer	W = White Pine
E = Swamp Hdwoods	M = Mpl, Bch, Brch	R = Red Pine	X = Non Stocked
F = Spruce Fir	MC = Mixed Conifer	S = Black Spruce	Z = Water
G = Grass	MD = Mixed Deciduous	T = Tamarack	

### Density

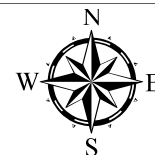
0 = Non Stocked	5 = Pole Timber Medium
1 = Seedling Sapling Poor	6 = Pole Timber Well
2 = Seedling Sapling Medium	7 = Saw Timber Poor
3 = Seedling Sapling Well	8 = Saw Timber Medium
4 = Pole Timber Poor	9 = Saw Timber Well

PU	Acres	PU	Acres
1	21.3	5	27.8
2	11.9	6	17.5
3	22.6		
4	30.6		

## Whole Lotta Oak Mix

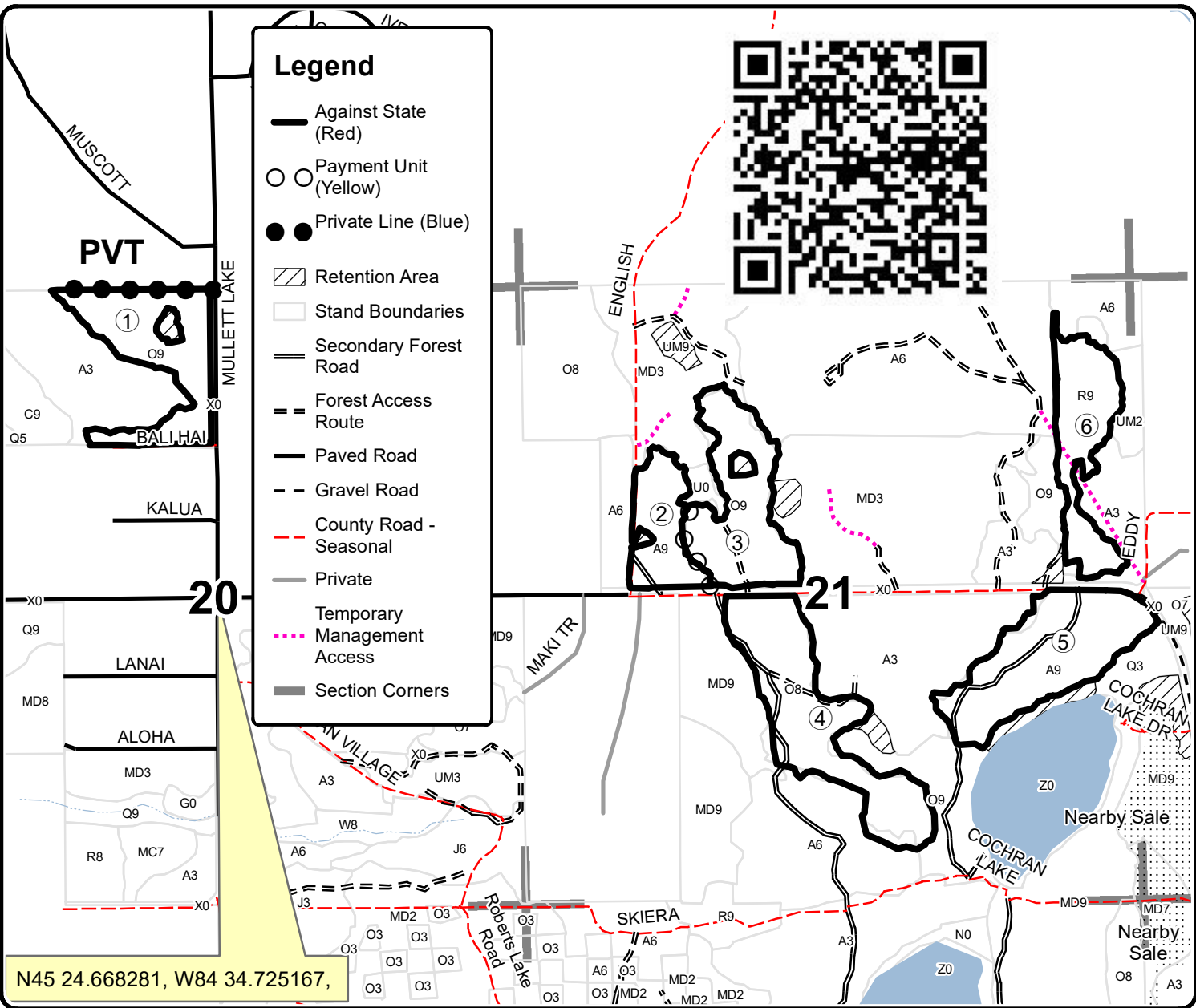
### Compartment 168

#### 131.7 Acres



### Legend

- Against State (Red)
- Payment Unit (Yellow)
- Private Line (Blue)
- Retention Area
- Stand Boundaries
- Secondary Forest Road
- Forest Access Route
- Paved Road
- Gravel Road
- County Road - Seasonal
- Private
- Temporary Management Access
- Section Corners



N45 24.668281, W84 34.725167,

