



TIMBER SALE MAP

This information provided by authority of Part 525, 1994 PA 451, as amended.

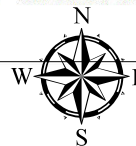
Forest Management Unit Gaylord		County Cheboygan	Mapped By TSP	Date 09/29/2022	Page 1	of 1
Township 39N	Range 03W	Section(s) and Subdivision(s) 33: NESE, S1/2SE; 34: N1/2SW, SESW		Scale 1:15,840		

Cover Type

A = Aspen	H = Hemlock	N = Marsh	U = Upland Brush
B = Paper Birch	J = Jack Pine	O = Oak	UM = Upland Mixed
C = Cedar	L = Lowland Brush	P = Lowland Poplar	V = Bog or Marsh
D = Treed Bog	LM = Lowland Mixed	Q = Mixed Swamp Conifer	W = White Pine
E = Swamp Hdwoods	M = Mpl, Bch, Brch	R = Red Pine	X = Non Stocked
F = Spruce Fir	MC = Mixed Conifer	S = Black Spruce	Z = Water
G = Grass	MD = Mixed Deciduous	T = Tamarack	

Density

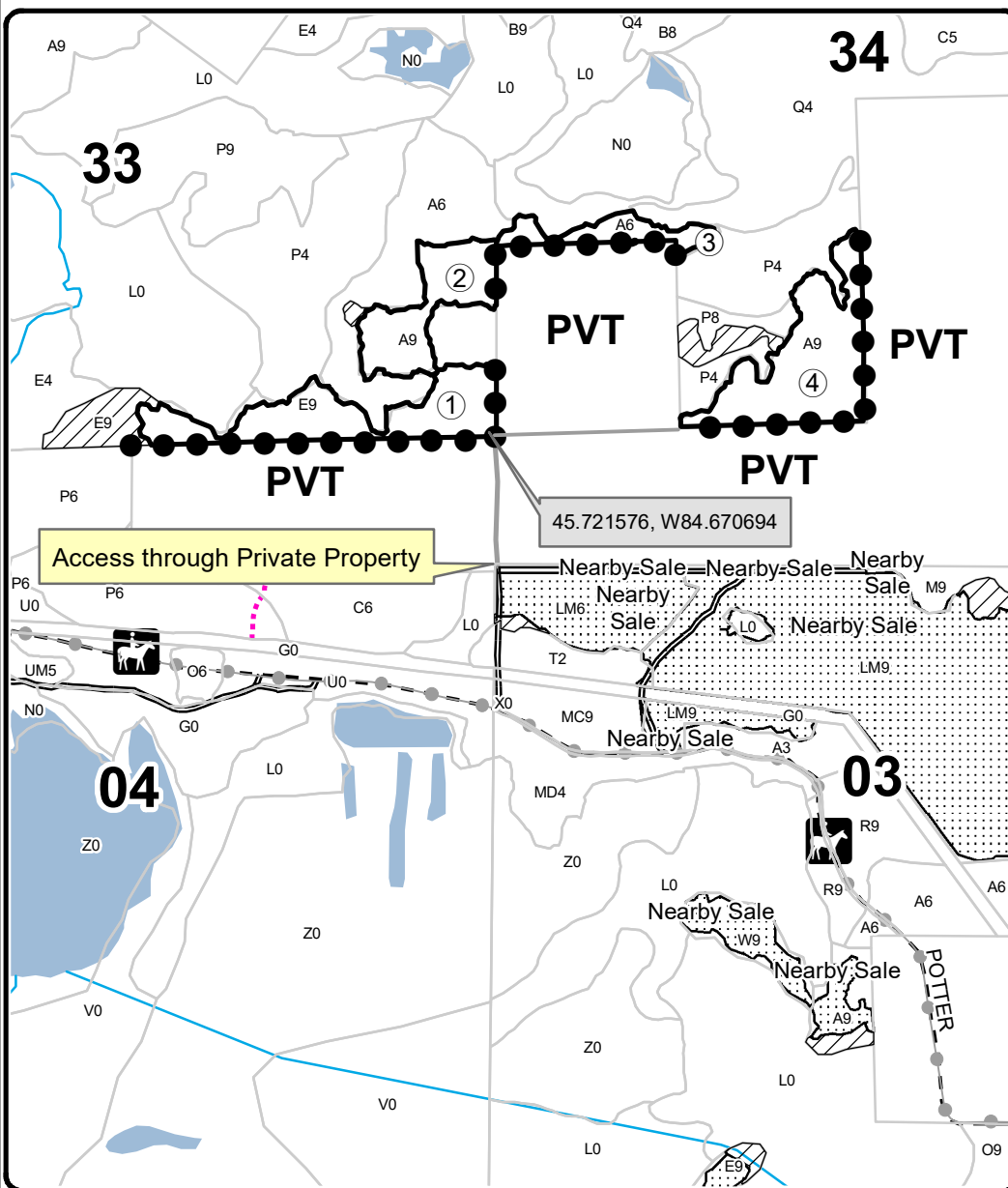
0 = Non Stocked	5 = Pole Timber Medium
1 = Seedling Sapling Poor	6 = Pole Timber Well
2 = Seedling Sapling Medium	7 = Saw Timber Poor
3 = Seedling Sapling Well	8 = Saw Timber Medium
4 = Pole Timber Poor	9 = Saw Timber Well



PU	Acres	PU	Acres
1	16.2	4	18.5
2	10.8		
3	4.8		

Around the 40 Aspen Mix

Compartment 136 & 164
50.3 Acres



Legend

- Against State (Red)
- Private Line (Blue)
- Retention Area
- Stand Boundaries
- Recreational Trail
- Secondary Forest Road
- Gravel Road
- Private
- Temporary Management Access
- Perennial River
- Lakes and Rivers
- Nearby Timber Sales

Locator Map

1:200,000

