



# TIMBER SALE MAP

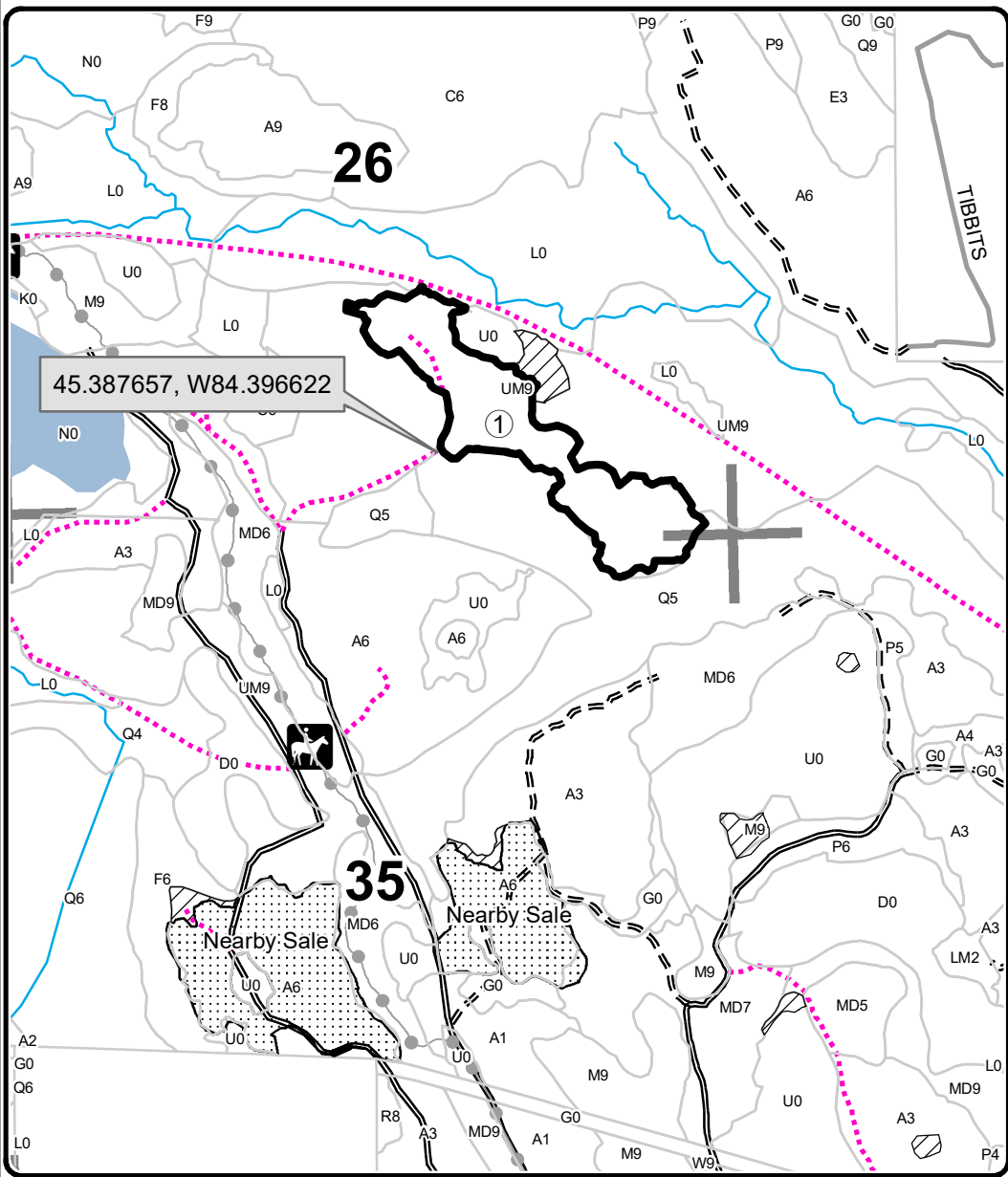
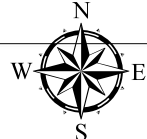
This information provided by authority of Part 525, 1994 PA 451, as amended.

Forest Management Unit <b>Gaylord</b>		County <b>Cheboygan</b>	Mapped By <b>TSP</b>	Date <b>09/29/2022</b>	Page <b>1</b>	of <b>2</b>
Township <b>35N</b>	Range <b>01W</b>	Section(s) and Subdivision(s) <b>26: NESW, NWSE, S1/2SE; 27: SENW, NWNE, S1/2NE, NESW, N1/2SE; 35: NENE</b>			Scale <b>1:15,840</b>	
<b>Cover Type</b>				<b>Density</b>		
A = Aspen	H = Hemlock	N = Marsh	U = Upland Brush	0 = Non Stocked	5 = Pole Timber Medium	
B = Paper Birch	J = Jack Pine	O = Oak	UM = Upland Mixed	1 = Seedling Sapling Poor	6 = Pole Timber Well	
C = Cedar	L = Lowland Brush	P = Lowland Poplar	V = Bog or Marsh	2 = Seedling Sapling Medium	7 = Saw Timber Poor	
D = Treed Bog	LM = Lowland Mixed	Q = Mixed Swamp Conifer	W = White Pine	3 = Seedling Sapling Well	8 = Saw Timber Medium	
E = Swamp Hdwoods	M = Mpl, Bch, Brch	R = Red Pine	X = Non Stocked	4 = Pole Timber Poor	9 = Saw Timber Well	
F = Spruce Fir	MC = Mixed Conifer	S = Black Spruce	Z = Water			
G = Grass	MD = Mixed Deciduous	T = Tamarack				

PU	Acres
1	31.4
2	12.4
3	30.2

## Spread Out Aspen Mix

Compartment 185  
74 Acres



### Legend

- Against State (Red)
- ▨ Retention Area
- Stand Boundaries
- Recreational Trail
- Secondary Forest Road
- == Forest Access Route
- Private
- ⋯ Temporary Management Access
- Perennial River
- Lakes and Rivers
- ▨ Nearby Timber Sales
- Section Corners

Locator Map  
1:200,000

