



TIMBER SALE MAP

This information provided by authority of Part 525, 1994 PA 451, as amended.

Forest Management Unit Gaylord		County Cheboygan	Mapped By TSP	Date 09/29/2022	Page 1	of 2
Township 38 & 39 N	Range 03W	Section(s) and Subdivision(s) 38N 03W 5: NENE; 39N 03W 19: N1/2SE; 28: NWSW; 29: SW, NESE, S1/2SE; 30: NESE; 32: NWNE, NESW, SE; 33: W1/2SW		Cruised By Scheele	Scale 1:15,840	

Cover Type

A = Aspen	H = Hemlock	N = Marsh	U = Upland Brush
B = Paper Birch	J = Jack Pine	O = Oak	UM = Upland Mixed
C = Cedar	L = Lowland Brush	P = Lowland Poplar	V = Bog or Marsh
D = Treed Bog	LM = Lowland Mixed	Q = Mixed Swamp Conifer	W = White Pine
E = Swamp Hdwoods	M = Mpl, Bch, Brch	R = Red Pine	X = Non Stocked
F = Spruce Fir	MC = Mixed Conifer	S = Black Spruce	Z = Water
G = Grass	MD = Mixed Deciduous	T = Tamarack	

Density

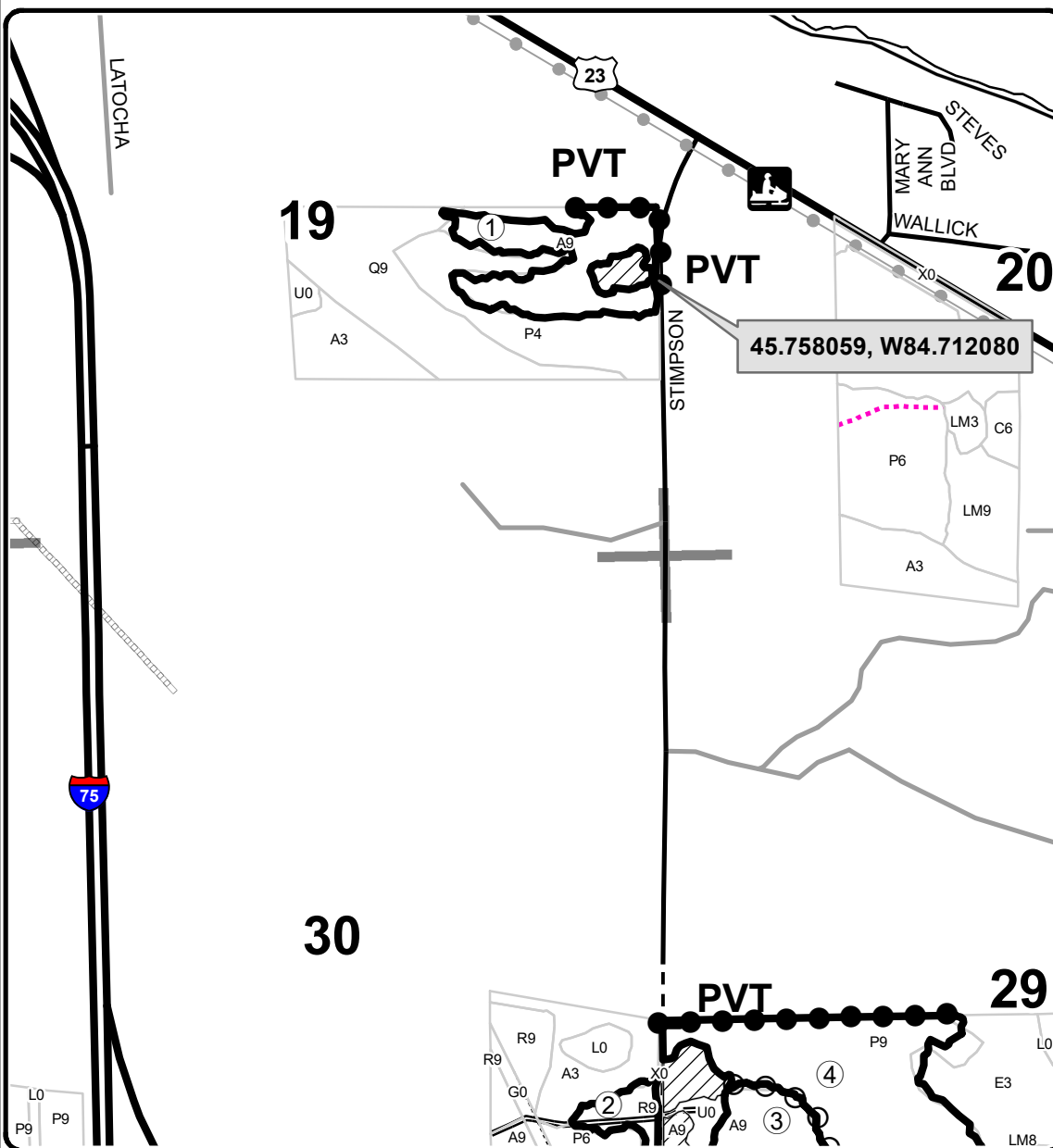
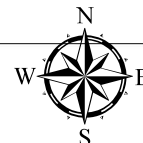
0 = Non Stocked	5 = Pole Timber Medium
1 = Seedling Sapling Poor	6 = Pole Timber Well
2 = Seedling Sapling Medium	7 = Saw Timber Poor
3 = Seedling Sapling Well	8 = Saw Timber Medium
4 = Pole Timber Poor	9 = Saw Timber Well

PU	Acres	PU	Acres
1	18.6	5	17.8
2	4.2	6	30.7
3	40.8	7	100.4
4	47.3		

Stimpson Road Aspen Mix

Compartment 136

259.8 Acres



45.758059, W84.712080

Legend

- Against State (Red)
- Payment Unit (Yellow)
- Private Line (Blue)
- Retention Area
- Stand Boundaries
- Utility Line
- Recreational Trail
- Highways
- Secondary Forest Road
- Forest Access Route
- Paved Road
- Gravel Road
- Private
- Temporary Management Access
- Section Corners

Locator Map

1:200,000

