



### TIMBER SALE MAP

This information provided by authority of Part 525, 1994 PA 451, as amended.

|                                 |                           |                |
|---------------------------------|---------------------------|----------------|
| Sale Number<br><b>61-632-24</b> | Date<br><b>06/26/2024</b> |                |
| Scale<br><b>1:22,000</b>        | Page<br><b>1</b>          | Of<br><b>1</b> |

|   |                           |   |
|---|---------------------------|---|
| Forest Management Unit<br><b>Traverse City Mgt Unit</b> | County<br><b>Kalkaska</b> | Mapped By: Crigier<br>Cruised By: Crigier |
|---|---------------------------|---|

|                        |                     |   |
|------------------------|---------------------|---|
| Township<br><b>25N</b> | Range<br><b>05W</b> | Section(s) and<br>Subdivision(s)<br><b>S1/2NE,E1/2SW,N1/2SE,SWSE; Sec. 8 NWNW;<br/>Sec. 4 W1/2SW; Sec. 5 NWNW,S1/2NW,SWNE,N1/2SW,NWSE; Sec. 6</b> |
|------------------------|---------------------|---|

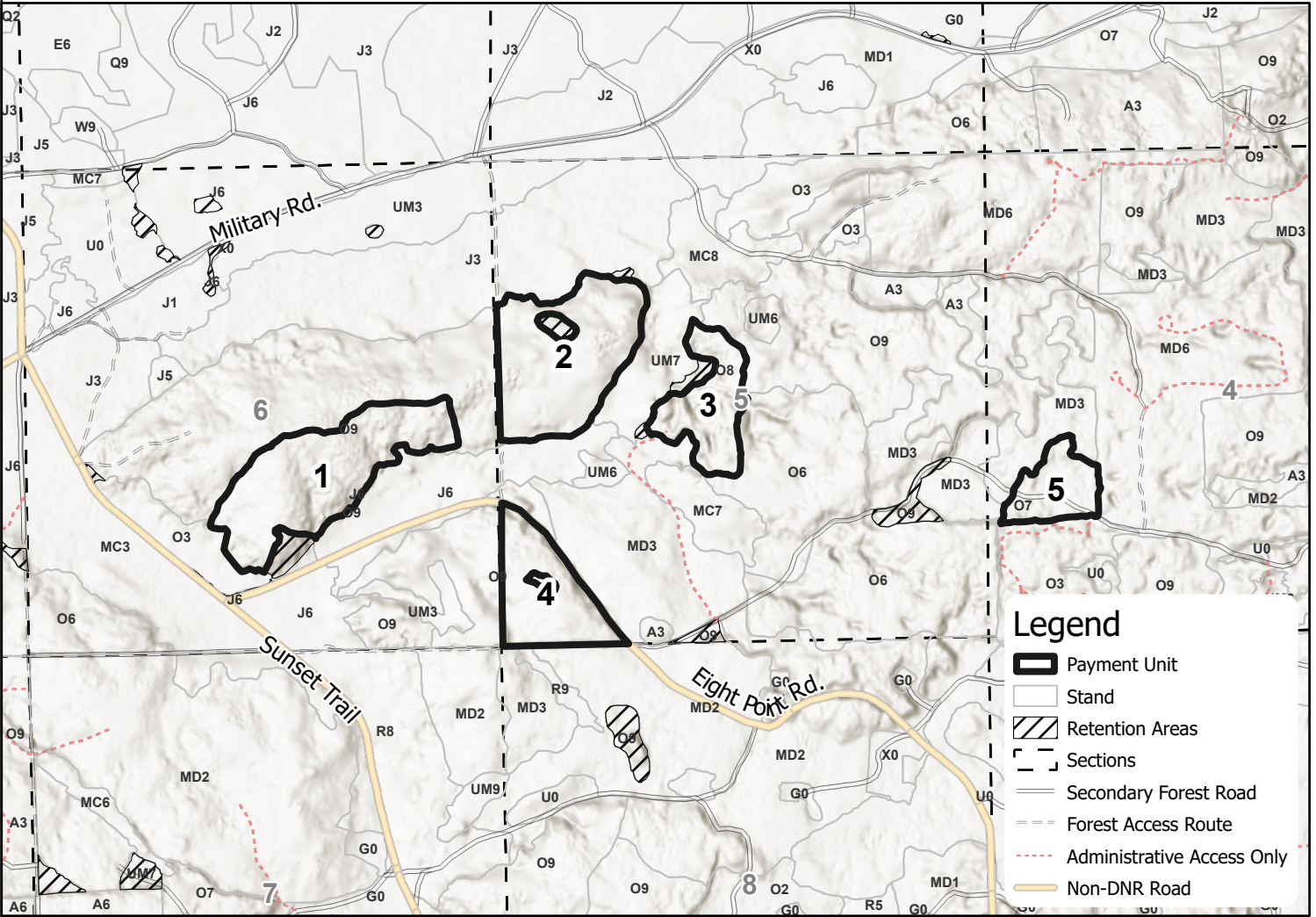
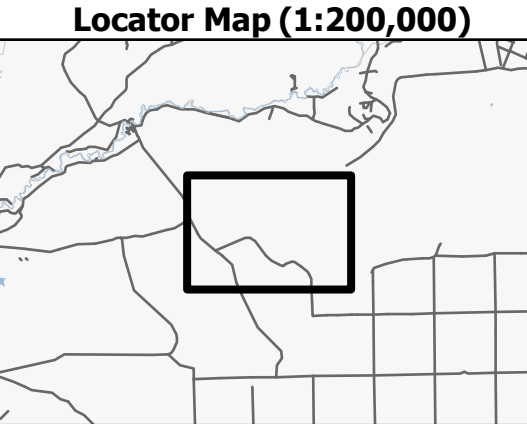
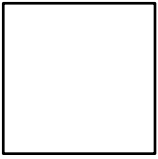
| Cover Type          |                         |                         |                        |
|---------------------|-------------------------|-------------------------|------------------------|
| A = Aspen           | J = Jack Pine           | O = Oak                 | U = Upland Brush       |
| B = Paper Birch     | K = Rock                | P = Lowland Poplar      | UM = Upland Mix Forest |
| C = Cedar           | L = Lowland Brush       | Q = Mixed Swamp Conifer | V = Bog or Marsh       |
| D = Treed Bog       | LM = Lowland Mix Forest | R = Red Pine            | W = White Pine         |
| E = Swamp Hardwoods | M = Maple, Beech, Birch | S = Black Spruce        | X = Non Stocked        |
| F = Spruce/Fir      | MC = Mixed Conifer      | T = Tamarack            | Y = Sand               |
| G = Grass           | MD = Mixed Deciduous    | Z = Water               |                        |
| H = Hemlock         | N = Marsh               |                         |                        |

| Density                     |                        |
|-----------------------------|------------------------|
| 0 = Non Stocked             | 5 = Pole Timber Medium |
| 1 = Seedling Sapling Poor   | 6 = Pole Timber Well   |
| 2 = Seedling Sapling Medium | 7 = Saw Timber Poor    |
| 3 = Seedling Sapling Well   | 8 = Saw Timber Medium  |
| 4 = Pole Timber Poor        | 9 = Saw Timber Well    |

| PU # | Acres |
|------|-------|
| 1    | 50.7  |
| 2    | 47.5  |
| 3    | 22.2  |
| 4    | 26.9  |
| 5    | 14.6  |

## High Ground Oak 161.9 Acres

Use QR Code to open Map in App



| Legend |                            |
|--------|----------------------------|
|        | Payment Unit               |
|        | Stand                      |
|        | Retention Areas            |
|        | Sections                   |
|        | Secondary Forest Road      |
|        | Forest Access Route        |
|        | Administrative Access Only |
|        | Non-DNR Road               |