



### TIMBER SALE MAP

This information provided by authority of Part 525, 1994 PA 451, as amended.

|                                 |                           |
|---------------------------------|---------------------------|
| Sale Number<br><b>61-122-24</b> | Date<br><b>06/05/2024</b> |
| Scale<br><b>1:10,000</b>        | Page<br><b>1</b>          |
|                                 | Of<br><b>1</b>            |

|  |                    |                         |
|--|--------------------|-------------------------|
| Forest Management Unit<br>Traverse City Mgt Unit | County<br>Kalkaska | Mapped By: Chas Osborn  |
|  |                    | Cruised By: Chas Osborn |

|                 |              |  |
|-----------------|--------------|--|
| Township<br>25N | Range<br>06W | Section(s) and<br>Subdivision(s)<br>Sec. 26 SWSW; Sec. 27 E1/2SW,SE; |
|-----------------|--------------|--|

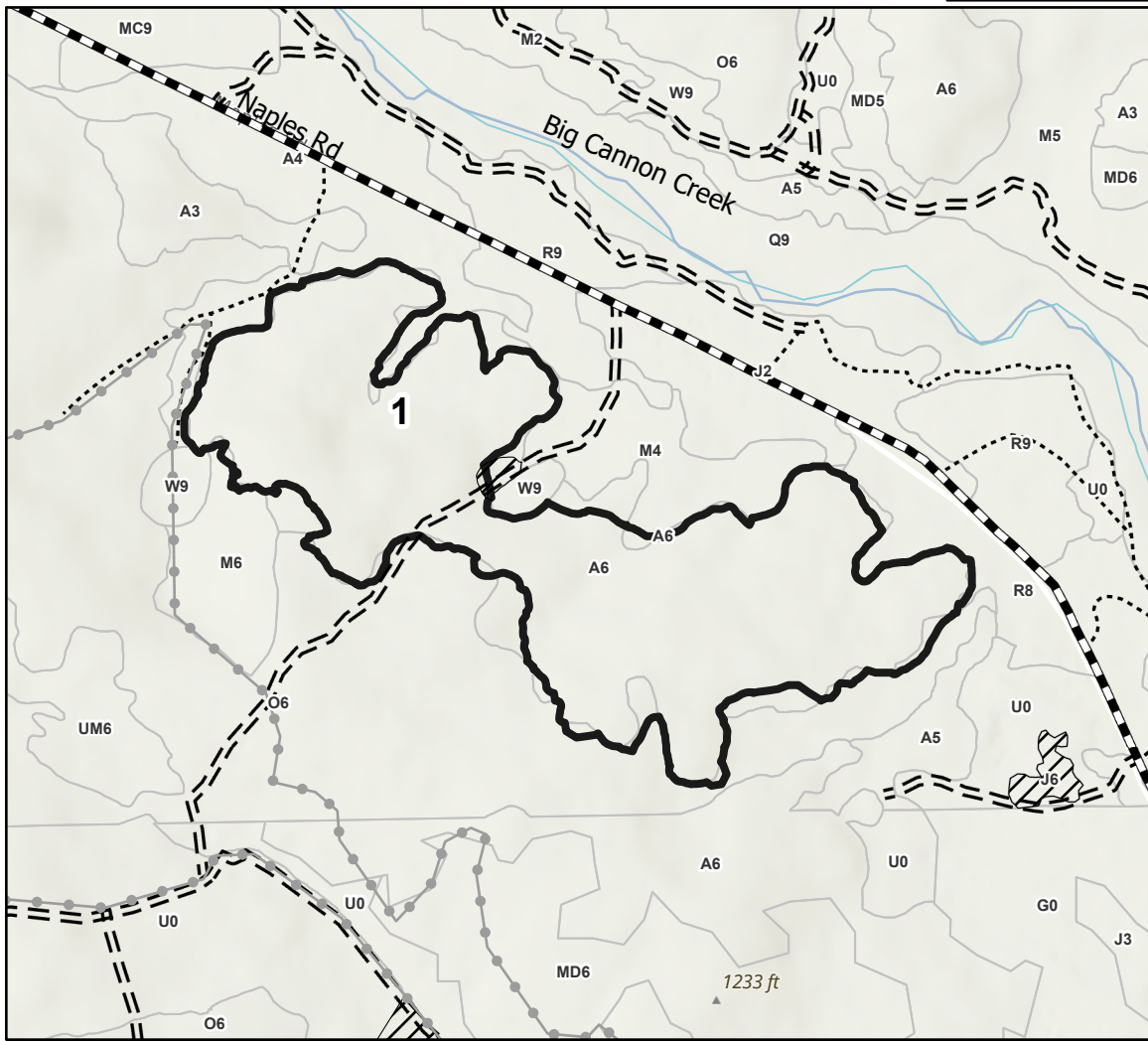
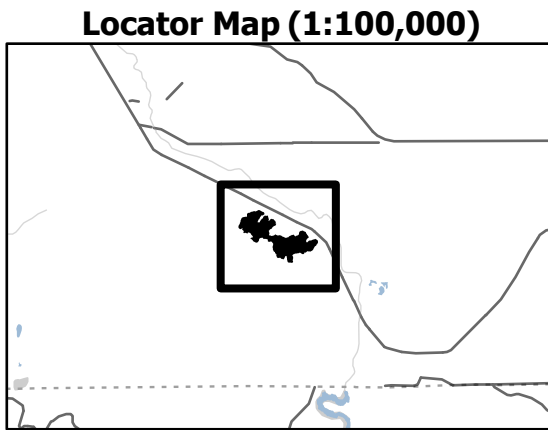
| Cover Type          |                         |                         |                        |
|---------------------|-------------------------|-------------------------|------------------------|
| A = Aspen           | J = Jack Pine           | O = Oak                 | U = Upland Brush       |
| B = Paper Birch     | K = Rock                | P = Lowland Poplar      | UM = Upland Mix Forest |
| C = Cedar           | L = Lowland Brush       | Q = Mixed Swamp Conifer | V = Bog or Marsh       |
| D = Treed Bog       | LM = Lowland Mix Forest | R = Red Pine            | W = White Pine         |
| E = Swamp Hardwoods | M = Maple, Beech, Birch | S = Black Spruce        | X = Non Stocked        |
| F = Spruce/Fir      | MC = Mixed Conifer      | T = Tamarack            | Y = Sand               |
| G = Grass           | MD = Mixed Deciduous    |                         | Z = Water              |
| H = Hemlock         | N = Marsh               |                         |                        |

| Density                     |                        |
|-----------------------------|------------------------|
| 0 = Non Stocked             | 5 = Pole Timber Medium |
| 1 = Seedling Sapling Poor   | 6 = Pole Timber Well   |
| 2 = Seedling Sapling Medium | 7 = Saw Timber Poor    |
| 3 = Seedling Sapling Well   | 8 = Saw Timber Medium  |
| 4 = Pole Timber Poor        | 9 = Saw Timber Well    |

| PU # | Acres |
|------|-------|
| 1    | 67.1  |

## Pretty Fly For a New Guy

67.1 Acres



### Legend

- Payment Unit
- Stand
- Retention Areas
- Recreational Trail
- Primary Forest Road
- Forest Access Route
- Administrative Access Only
- Paved Road
- Government Gravel/Dirt
- Private Gravel/Dirt

Use QR Code to open Map in App

