



### TIMBER SALE MAP

This information provided by authority of Part 525, 1994 PA 451, as amended.

Sale Number <b>45-112-23</b>	Date 11/20/2023	
Scale 1:20,000	Page 1	Of 1

Forest Management Unit Sault Ste Marie Mgt Unit	County Mackinac	Mapped By: C. Flatt Cruised By: Naubinway DNR Staff
--	--------------------	--

Township 43N	Range 07W /	Section(s) and Subdivision(s) Sec. 25 SENE,SE; Sec. 30 SWNW,W1/2SW; Sec. 36 NE;
-----------------	----------------	---

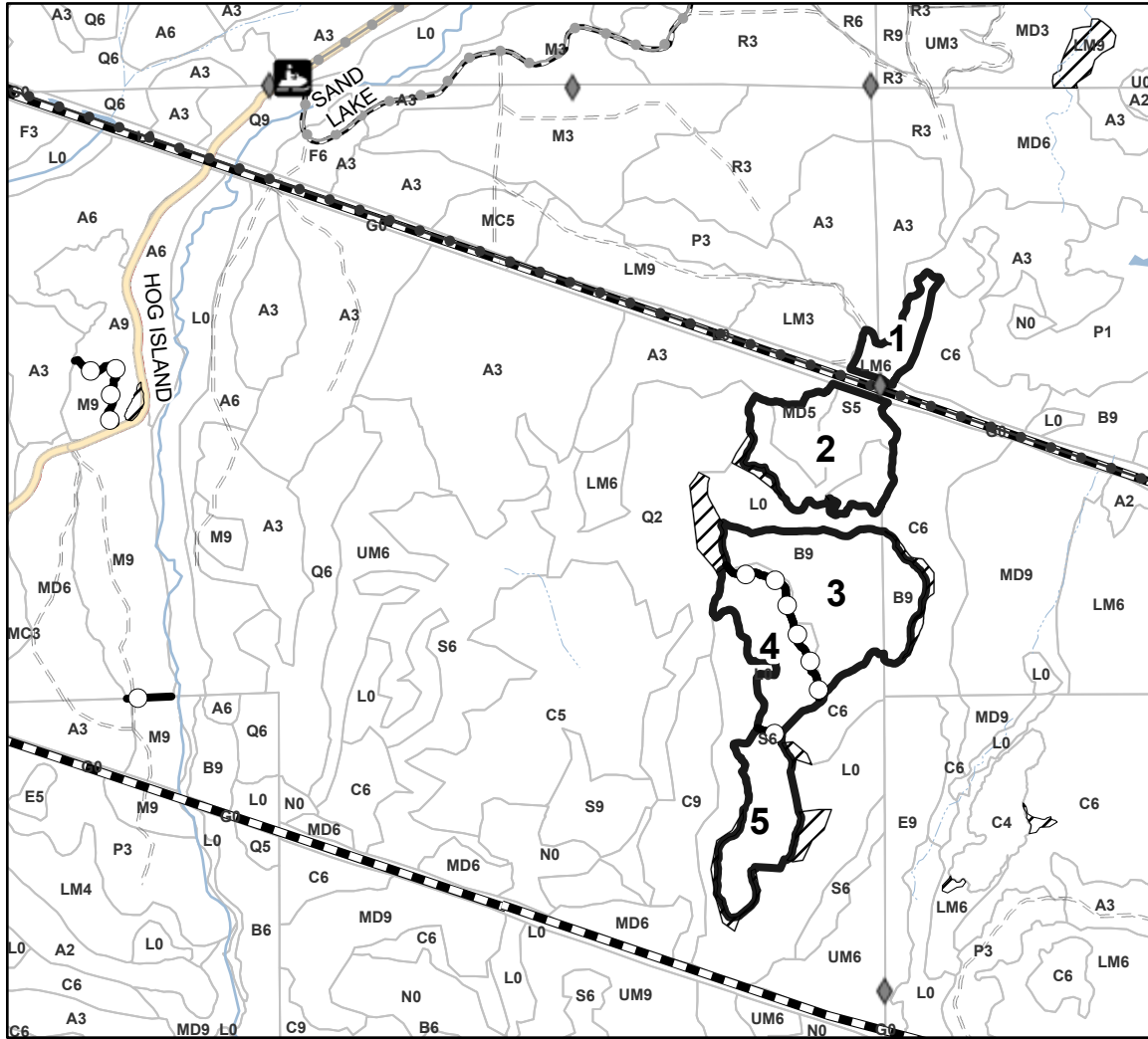
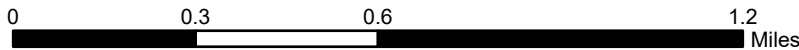
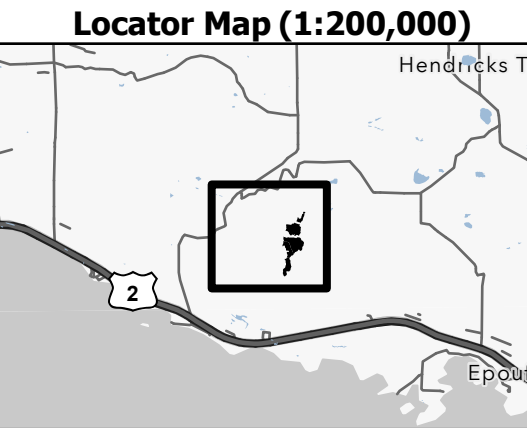
Cover Type			
A = Aspen	J = Jack Pine	O = Oak	U = Upland Brush
B = Paper Birch	K = Rock	P = Lowland Poplar	UM = Upland Mix Forest
C = Cedar	L = Lowland Brush	Q = Mixed Swamp Conifer	V = Bog or Marsh
D = Treed Bog	LM = Lowland Mix Forest	R = Red Pine	W = White Pine
E = Swamp Hardwoods	M = Maple, Beech, Birch	S = Black Spruce	X = Non Stocked
F = Spruce/Fir	MC = Mixed Conifer	T = Tamarack	Y = Sand
G = Grass	MD = Mixed Deciduous	Z = Water	
H = Hemlock	N = Marsh		

Density	
0 = Non Stocked	5 = Pole Timber Medium
1 = Seedling Sapling Poor	6 = Pole Timber Well
2 = Seedling Sapling Medium	7 = Saw Timber Poor
3 = Seedling Sapling Well	8 = Saw Timber Medium
4 = Pole Timber Poor	9 = Saw Timber Well

PU #	Acres
1	6
2	25.3
3	33.9
4	14.9
5	15.5

### Move Along Mix

**95.5 Acres**



### Legend

- Against State (Red)
- Payment Unit (Purple)
- Stand
- Retention Areas
- Recreational Trail
- Primary Forest Road
- Forest Access Route
- Non-DNR Road
- Pipeline
- Powerline
- Snowmobile
- Field Grade Corner

Use QR Code to open Map in App

