



### TIMBER SALE MAP

This information provided by authority of Part 525, 1994 PA 451, as amended.

Sale Number <b>45-107-24</b>	Date <b>01/30/2024</b>
Scale <b>1:15,840</b>	Page <b>1</b>
	Of <b>1</b>

Forest Management Unit <b>Sault Ste Marie Mgt Unit</b>	County <b>Mackinac</b>	Mapped By: Plato
		Cruised By: Plato

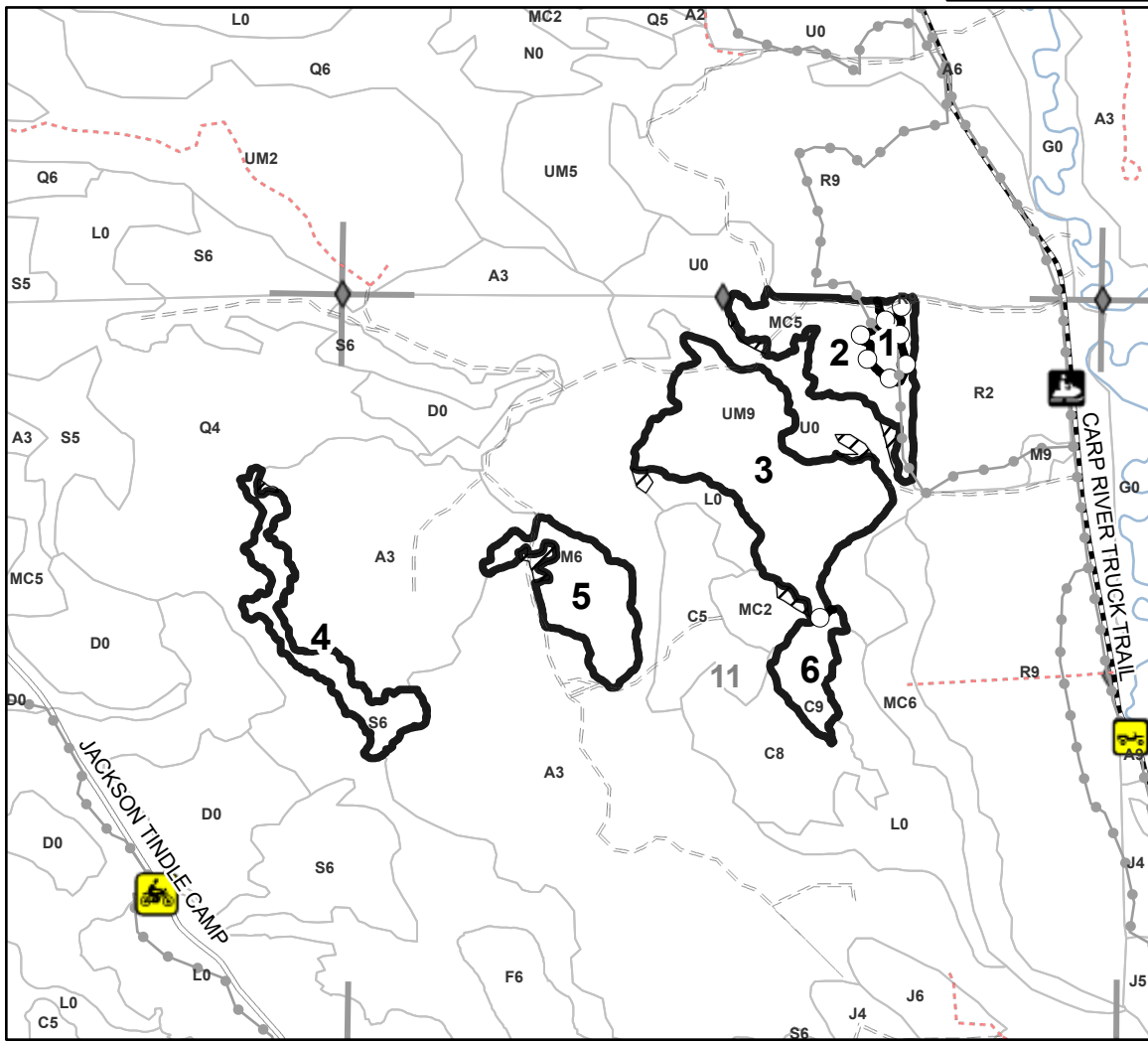
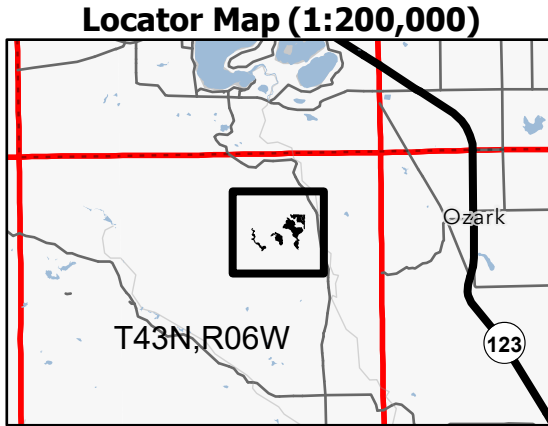
Township <b>43N</b>	Range <b>06W</b>	Section(s) and Subdivision(s) <b>Sec. 10 E1/2NE,NESE; Sec. 11 N1/2SW,NWSE; Sec. 11 NENW,S1/2NW,N1/2NE,SWNE; Sec. 2 SWSE;</b>
------------------------	---------------------	---

Cover Type			
A = Aspen	J = Jack Pine	O = Oak	U = Upland Brush
B = Paper Birch	K = Rock	P = Lowland Poplar	UM = Upland Mix Forest
C = Cedar	L = Lowland Brush	Q = Mixed Swamp Conifer	V = Bog or Marsh
D = Treed Bog	LM = Lowland Mix Forest	R = Red Pine	W = White Pine
E = Swamp Hardwoods	M = Maple, Beech, Birch	S = Black Spruce	X = Non Stocked
F = Spruce/Fir	MC = Mixed Conifer	T = Tamarack	Y = Sand
G = Grass	MD = Mixed Deciduous	Z = Water	
H = Hemlock	N = Marsh		

Density	
0 = Non Stocked	5 = Pole Timber Medium
1 = Seedling Sapling Poor	6 = Pole Timber Well
2 = Seedling Sapling Medium	7 = Saw Timber Poor
3 = Seedling Sapling Well	8 = Saw Timber Medium
4 = Pole Timber Poor	9 = Saw Timber Well

PU #	Acres	PU #	Acres
1	2.4	4	10.3
2	14.6	5	12.8
3	32.4	6	5.9

**Mega Pint Mix**  
**78.4 Acres**



Legend	
	Sale Boundary - Red
	Stand
	Sections
	Payment Unit (Purple)
	Recreational Trail
	Paved Road
	Gravel Road
	County Road - Seasonal
	Private Road
	Primary Forest Road
	Secondary Forest Road
	Forest Access Route
	Administrative Access Only
	Field Grade Corner
	MIRIS Section Corner
	Nearby Timber Sale
	Retention Areas

Use QR Code to open Map in App

