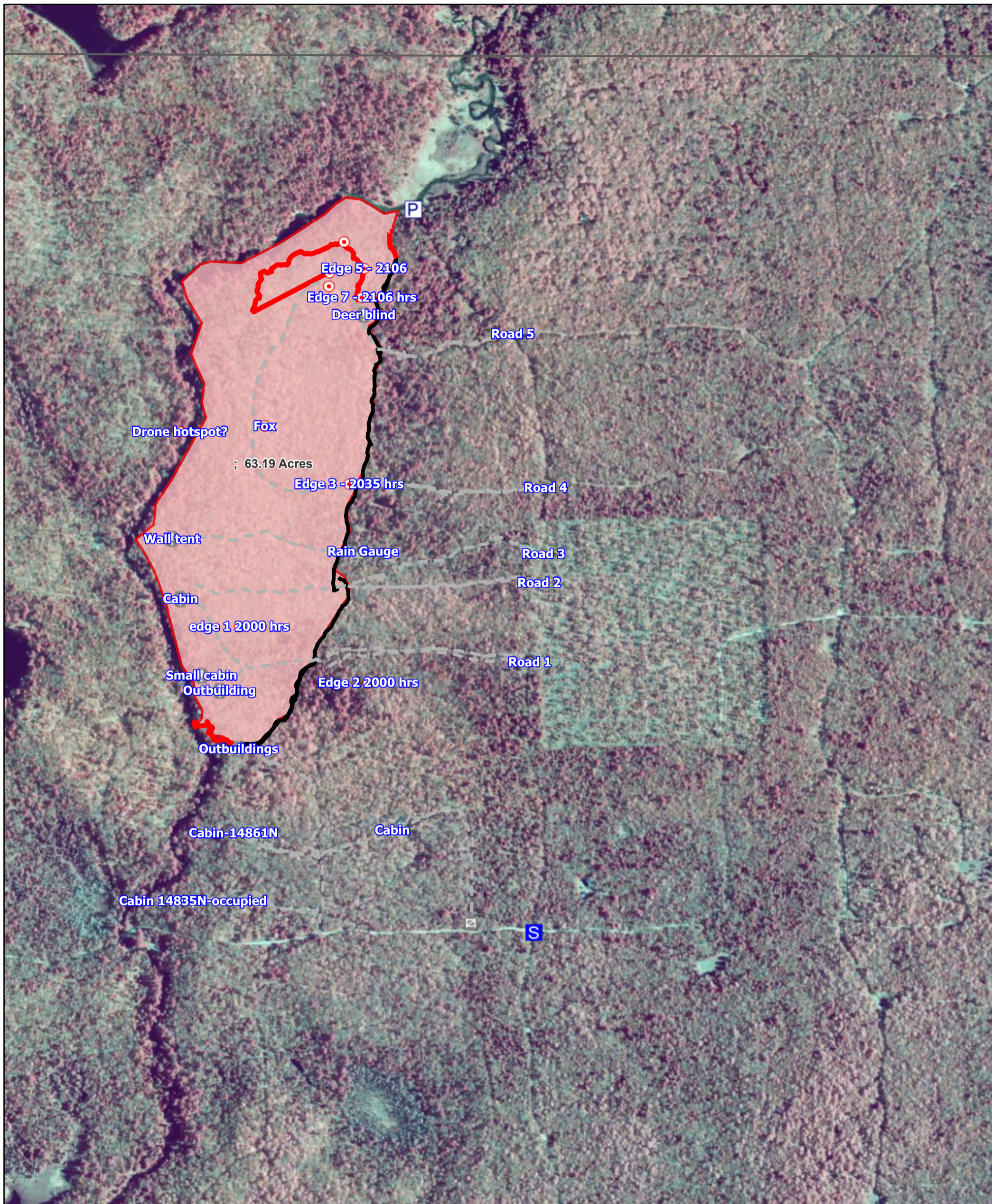


Fire Editor Map



10/23/2024, 7:30:50 PM

1801efa2ca8-layer-59

S Staging Area

Hot Spot - Spot Fire

Value at Risk

Other

Gate

1801efa2ca9-layer-60

P Pump

1801efa2ca7-layer-58

IR Isolated Heat Source

1801efa2ca5-layer-57

Completed Dozer Line

Access or Improved Road

Fire Edge (Field Collection)

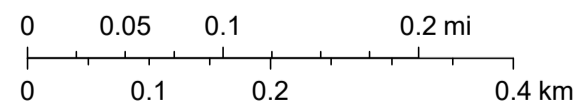
1801efa2ca0-layer-55

Wildfire Daily Fire Perimeter

Wildfire_7197

County Boundary

1:9,028



Maxar