



TIMBER SALE MAP

This information provided by authority of Part 525, 1994 PA 451, as amended.

Forest Management Unit Newberry		County Luce	Mapped By Lester Livermore	Date 09/06/2019	Page 1	of 1
Township 46N	Range 11W	Section(s) and Subdivision(s) Section 5- SESW, SWSE Section 8- NENW, N1/2NE, SENE, Section 9 - W1/2NW		Scale 1:15,840		
Cruised By Newberry Staff						

Cover Type

A = Aspen	H = Hemlock	N = Marsh	U = Upland Brush
B = Paper Birch	J = Jack Pine	O = Oak	UM = Upland Mixed
C = Cedar	L = Lowland Brush	P = Lowland Poplar	V = Bog or Marsh
D = Treed Bog	LM = Lowland Mixed	Q = Mixed Swamp Conifer	W = White Pine
E = Swamp Hdwoods	M = Mpl, Bch, Brch	R = Red Pine	X = Non Stocked
F = Spruce Fir	MC = Mixed Conifer	S = Black Spruce	Z = Water
G = Grass	MD = Mixed Deciduous	T = Tamarack	

Density

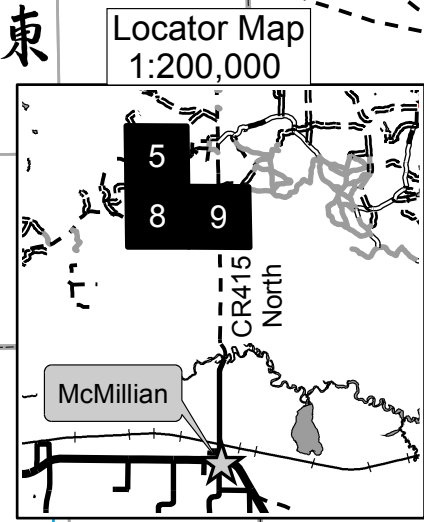
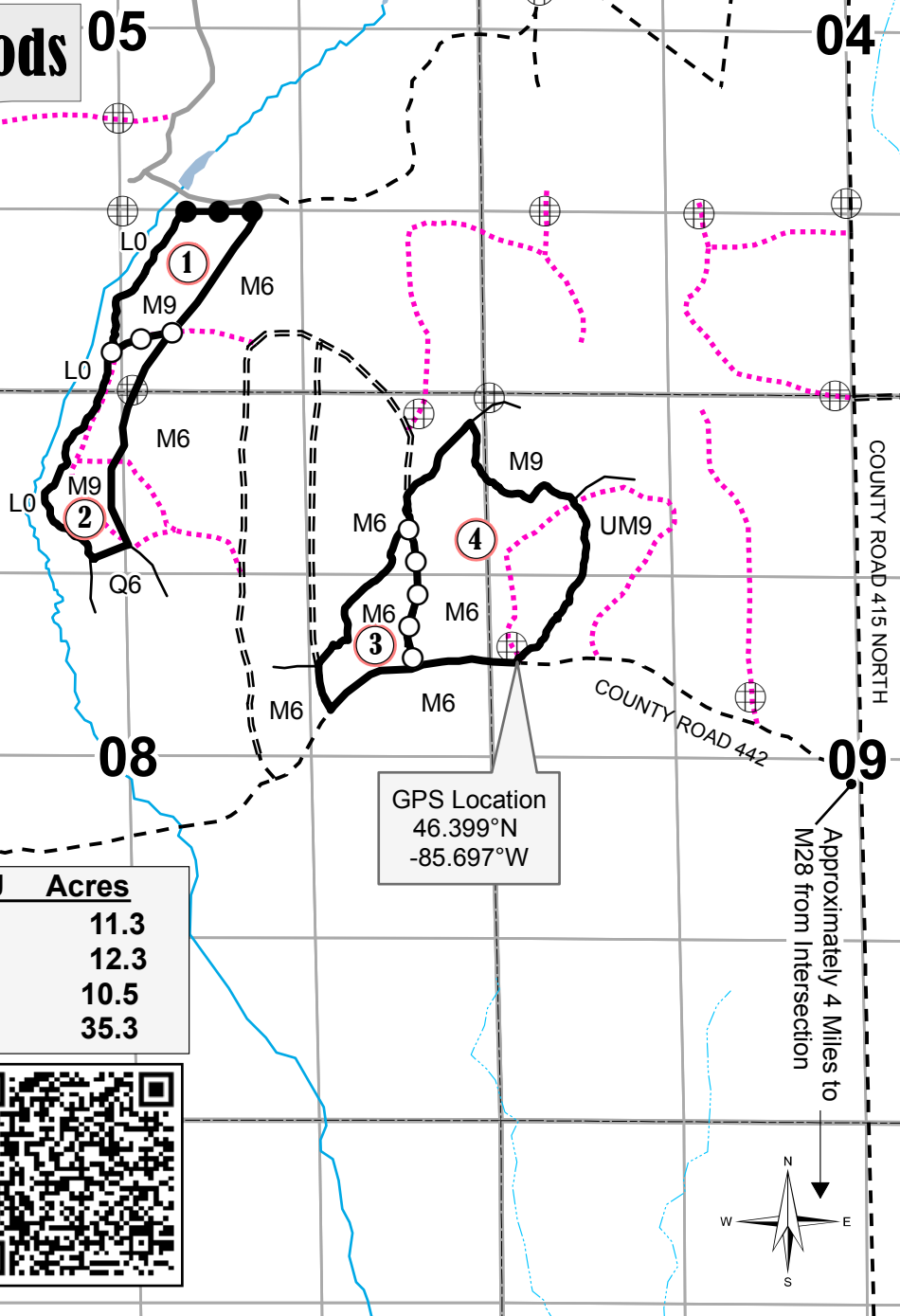
0 = Non Stocked	5 = Pole Timber Medium
1 = Seedling Sapling Poor	6 = Pole Timber Well
2 = Seedling Sapling Medium	7 = Saw Timber Poor
3 = Seedling Sapling Well	8 = Saw Timber Medium
4 = Pole Timber Poor	9 = Saw Timber Well

East Creek Hardwoods

Compartment 101
69.4 Acres

Legend

- Against State (Red)
- Payment Unit (Road)
- Private Line (Blue)
- PU Label
- Survey Corners
- Secondary Forest Road
- Forest Access Route
- Gravel Road
- Private
- Temporary Management Access
- Lakes and Rivers



PU	Acres
1	11.3
2	12.3
3	10.5
4	35.3



Approximately 4 Miles to
M28 from Intersection

