



# TIMBER SALE MAP

This information provided by authority of Part 525, 1994 PA 451, as amended.

Forest Management Unit

County

Mapped By **Livemore**

Date

10/08/2018

Page

of

1

Newberry Management Unit

Luce

Cruised By **Grossman Forestry**

Township  
48N / 47N

Range  
08W / 09W

Section(s) and Subdivision(s)  
**Section 31 - SWSW**  
**Section 01 - N½, SW¼, N½SE** **Section 06 - NW¼**

Scale

1:15,840

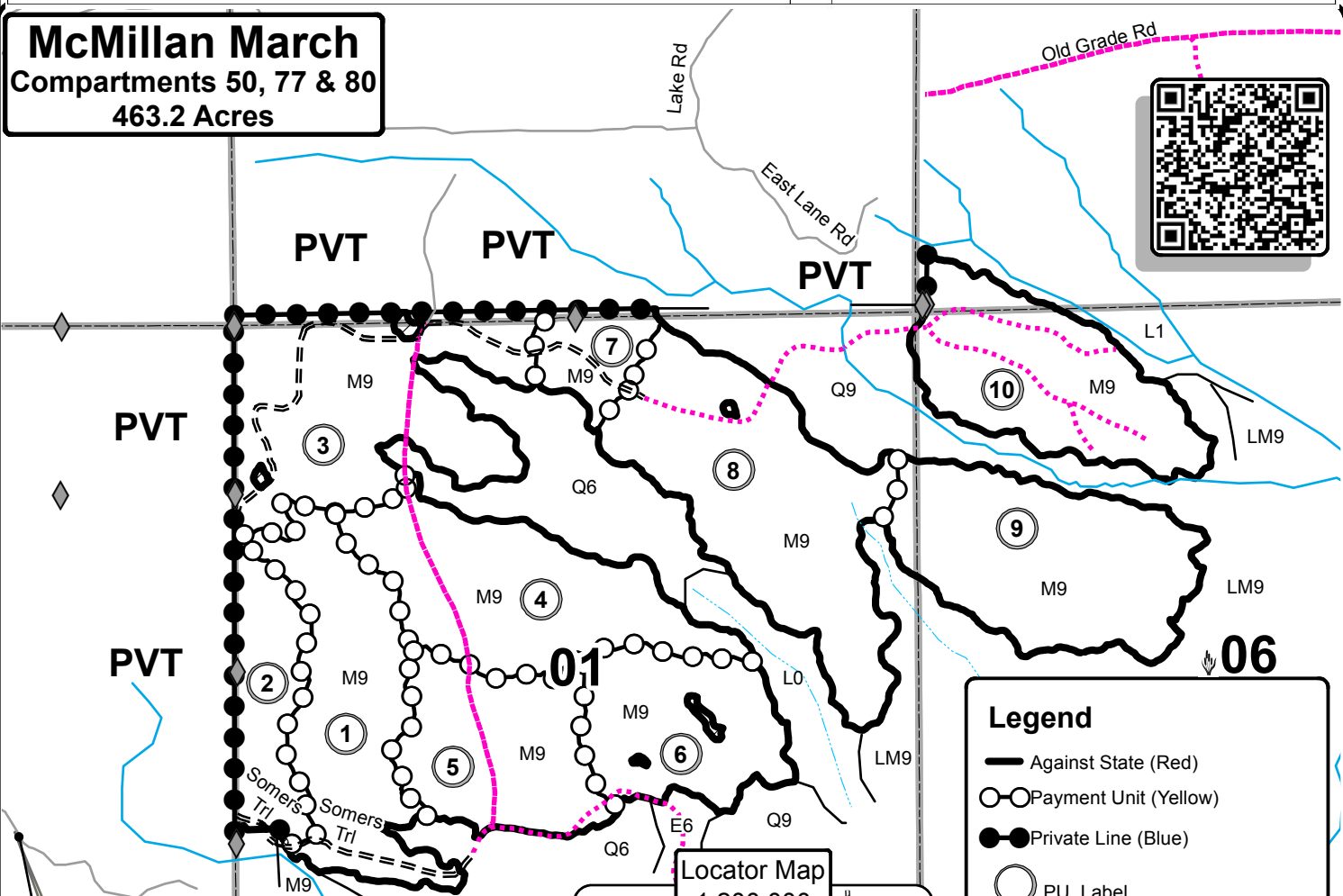
### Cover Type

- |                   |                      |                         |                   |
|-------------------|----------------------|-------------------------|-------------------|
| A = Aspen         | H = Hemlock          | N = Marsh               | U = Upland Brush  |
| B = Paper Birch   | J = Jack Pine        | O = Oak                 | UM = Upland Mixed |
| C = Cedar         | L = Lowland Brush    | P = Lowland Poplar      | V = Bog or Marsh  |
| D = Treed Bog     | LM = Lowland Mixed   | Q = Mixed Swamp Conifer | W = White Pine    |
| E = Swamp Hdwoods | M = Mpl, Bch, Brch   | R = Red Pine            | X = Non Stocked   |
| F = Spruce Fir    | MC = Mixed Conifer   | S = Black Spruce        | Z = Water         |
| G = Grass         | MD = Mixed Deciduous | T = Tamarack            |                   |

### Density

- |                             |                        |
|-----------------------------|------------------------|
| 0 = Non Stocked             | 5 = Pole Timber Medium |
| 1 = Seedling Sapling Poor   | 6 = Pole Timber Well   |
| 2 = Seedling Sapling Medium | 7 = Saw Timber Poor    |
| 3 = Seedling Sapling Well   | 8 = Saw Timber Medium  |
| 4 = Pole Timber Poor        | 9 = Saw Timber Well    |

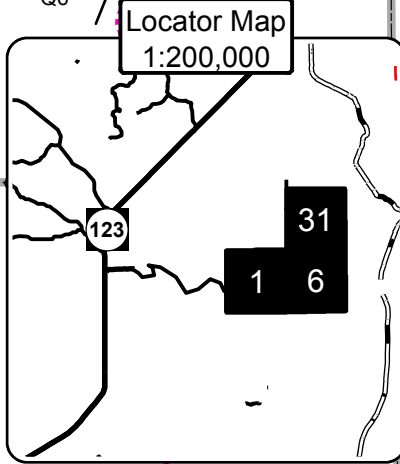
**McMillan March**  
**Compartments 50, 77 & 80**  
**463.2 Acres**



**GPS Location:** 46.495°N, -85.391°W

Access from M-123 approx 2.5 miles west through private ownership.

| PU | Acres | PU | Acres |
|----|-------|----|-------|
| 1  | 51.5  | 6  | 36.0  |
| 2  | 23.3  | 7  | 13.0  |
| 3  | 65.8  | 8  | 72.8  |
| 4  | 54.0  | 9  | 58.8  |
| 5  | 39.7  | 10 | 48.3  |



### Legend

- Against State (Red)
- Payment Unit (Yellow)
- Private Line (Blue)
- PU\_Label
- Secondary Forest Road
- Forest Access Route
- Gravel Road
- Private
- Temporary Management Access
- Intermittent Stream
- Perennial River
- PLSS - Sections
- 01** Section Numbers

